

STN Express[®] Version 8.5.2 for Windows[®] Getting Started

November 2013

Copyright © 2013 American Chemical Society.
All rights reserved.

Contents

Introduction	3
Hardware and Software Minimum Requirements.....	4
Installing STN Express.....	5
Obtaining the Installer.....	5
New Installation of STN Express	5
Upgrading from an earlier version of STN Express, Version 8.5	5
Upgrading from STN Express, Version 8.4.....	6
Upgrading from STN Express, Version 8.3.....	6
Upgrading from STN Express, Version 8.2 and Earlier Versions.....	6
Running the Installers.....	7
A. Windows MSI Installer	7
B. The STN Express Scripted Installer.....	7
Opening STN Express	8
Logon Setup with STN Setup Wizard.....	8
Changing Account Preferences for Academic Accounts.....	12
Connecting to STN.....	13
Connecting to CAS REGISTRY BLAST	14
STN Express Architecture and Installers.....	15
STN Express Software Architecture	15
Installers - Overview	16
MSI INSTALLER (v8_xmsi.exe).....	16
SCRIPTED INSTALLER: (v8_x.exe).....	17
STN Express Automatic File Updates	17
Enabling auto-update in STN Express	18
Manual updating of STN Express Support Files	19
Help	20
Technical Support	20

Introduction

This document contains information on:

- Installing STN Express
- Upgrading to Version 8.5.2 of STN Express
- Creating an STN[®] logon setup with the STN Setup Wizard
- Accessing STN and CAS REGISTRYSM BLAST[®]
- Detailed information on STN Express architecture and installers
- Help resources and contact information

For additional information, contact the [CAS Customer Center](#) for assistance.

Hardware and Software Minimum Requirements

Computer	<ul style="list-style-type: none"> • Microsoft® Windows® compatible PC • Minimum: Pentium® 4 (2.4 GHz) • Recommended: Intel compatible multi-core processor (2.0+ GHz preferred)
Memory	<p>Minimum:</p> <ul style="list-style-type: none"> • 512 MB RAM • 768 MB RAM to use CAS REGISTRY BLAST, Analyze Plus or post-processing tools <p>Recommended: 2+ GB RAM</p>
Available Hard Disk Space	<p>205+ MB</p> <ul style="list-style-type: none"> • 190 MB required when installation includes CAS REGISTRY BLAST and Merged Markush Service (MMS) • 15+ MB recommended for transcripts, tables, reports, etc.
Network Connections	<ul style="list-style-type: none"> • Connection to STN requires either the telnet protocol through port 23 (standard Winsock connection) or the HTTPS protocol through port 443 (SSL/VPN connection) • Automatic updating of support files and access to online Help requires an HTTP application-level connection through port 80 • Access to STN® Viewer™ and CAS REGISTRY BLAST requires an HTTPS application-level connection through port 443 • Access to CAS Full Text Options requires either an HTTP application-level connection through port 80 or an HTTPS application-level connection through port 443 (based on user preference)
Operating System and Web Browser	<ul style="list-style-type: none"> • Microsoft Windows XP™ SP3, Vista™, Windows 7™ (Windows 7 Starter version is not supported), Windows 8™, Windows 8.1 • Microsoft Internet Explorer®, Version 6.0 or higher, or Mozilla® Firefox®, Version 3.6 or higher • ActiveX®, Java™, and JavaScript™ must be enabled
Additional Software	<ul style="list-style-type: none"> • Microsoft Excel® 2003, 2007 or 2010 for the Analyze Plus Wizard or CAS Registry Number® and Role Report Wizard • QuickTime 7 for viewing images in STN Express transcripts • Adobe Reader for viewing PDF outputs for tables, reports and transcripts

Installing STN Express

Obtaining the Installer

1. Download an STN Express installer from your STN Service Center License and Download site. These sites offer two types of installers:
 - MSI – Microsoft Windows Installer (Recommended for new installations and upgrading)
 - Scripted installer -- “setup.exe”
2. Follow the system prompts to complete the download. Download to your Desktop or download folder

New Installation of STN Express

You may use either the MSI installer or the scripted installer. Start the installer and follow the prompts.

STN Express, Version 8.5.2 installs the program files to:

- 32-bit systems: *C:\Program Files\STN Express 8.5*
- 64-bit systems: *C:\Program Files (x86)\STN Express 8.5*

Files that are specific to, or created by, each User are stored within each individual user's Personal Files folders:

- XP: *My Documents\STN Express 8.5*
- Vista: *Documents\STN Express 8.5*
- Windows 7: *Documents\STN Express 8.5*
- Windows 8: *Documents\STN Express 8.5*

These personal folders are created the first time STN Express 8.5.2 is run.

Upgrading from an earlier version of STN Express, Version 8.5

You may use either the MSI installer or the scripted installer. Start the installer and follow the prompts.

By default, STN Express, Version 8.5.2 will install into the same locations as earlier versions of STN Express, Version 8.5. We recommend that you use the default location, which will upgrade (replace) the current program software while preserving User Files.

Upgrading from STN Express, Version 8.4

You may use either the MSI installer or the scripted installer. Start the installer and follow the prompts.

STN Express, Version 8.5 will create a new installation as described above in [New Installation of STN Express](#):

- No changes will be made to your STN Express, Version 8.4 installation. The Program Files and your User Profile entries in My Documents (or Documents) will be left intact.
- Login Setups, User Preferences, and Personal Dictionaries will be copied from your STN Express, Version 8.4 installation
- If your User Files (Transcripts, Queries, Uscripts, and AnaVist) for STN Express, Version 8.4 are in the default folders, they will be copied to the STN Express, Version 8.5 user folders.
- If you specified a custom folder for your User files in STN Express 8.4, Version 8.5 will use that custom folder for those files.

STN Express, Version 8.4 will not be uninstalled automatically. We recommend that you uninstall it after you confirm that STN Express, Version 8.5 works to your satisfaction.

Multiple versions of STN Express may remain installed; however, only one version may be run at a time.

Upgrading from STN Express, Version 8.3

STN Express, Version 8.3 is no longer supported. If this is the most recent version installed on your PC, the upgrade will proceed as described in [Upgrading from STN Express, Version 8.4](#) above.

Upgrading from STN Express, Version 8.2 and Earlier Versions

STN Express, Version 8.2 and earlier versions are no longer supported.

Upgrading directly from STN Express 8.2 or earlier versions is not supported. To upgrade from these versions:

1. Back up the files from your Trnscprt, Queries, AnaVist and Uscripts folders
2. Uninstall STN Express from the **Control Panel** or from the *Uninstall* entry in the STN Express folder in the **Start Menu**
3. Install STN Express as described in [New Installation of STN Express](#) above
4. Start STN Express to create the User Folders in *(My) Documents\STN Express 8.5*
5. Copy the files from the backup locations to the Trnscprt, Queries, AnaVist and Uscripts folders in the *(My) Documents\STN Express 8.5* folders

Running the Installers

A. Windows MSI Installer

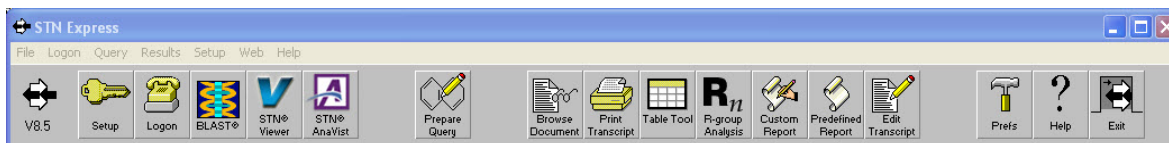
1. Exit running programs, especially STN Express and Excel.
2. Double-click or use *File > Open* to start the installation.
3. A welcome screen is displayed. Click **Next**.
4. You must accept the license agreement to proceed.
5. Select the target installation path. *We recommend that you accept the Default path.*
6. Select the type of installation
 - **Complete** – Recommended
 - **Custom** – For experienced MSI users
 - Select or de-select components
 - Basic Local Alignment Search Tool (BLAST) Java plug-in
 - MMS (Merged Markush Service) from Questel-Orbit
 - Change the installation path
 - Examine available disk space on multiple hard drives
 - Deselect automatic file update
7. Follow the prompts to complete the installation
8. Finish – A reboot of your computer is recommended but not mandatory.

B. The STN Express Scripted Installer

1. Exit running programs, especially STN Express and Excel.
2. Double-click or use *File > Open* to start the installation.
3. A welcome screen is displayed. Click **Next**.
4. You must accept the license agreement to proceed.
5. In the **Setup Options** of the *Install STN Express* dialog box, select or deselect any or all of the following:
 - **Software for BLAST and MMS** - to install the Basic Local Alignment Search Tool (BLAST) Java plug-in and the MMS (Merged Markush Service) from Questel-Orbit
 - **Start Menu Item** - to create a Windows **Start** menu item for STN Express
 - **Enable automatic updating** – enables updating of support files
6. Click **Next**.
7. Select the target installation path. *We recommend that you accept the Default path.*
8. Respond to the prompts to complete installation.
9. Finish – A reboot of your computer is recommended but not mandatory.

Opening STN Express

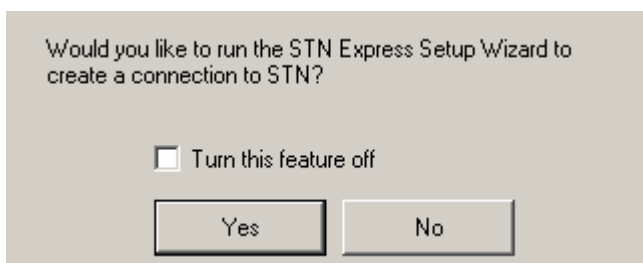
Launch STN Express from the Windows **Start** menu. (By default, a shortcut has been created in *Programs>STN Express 8.5*.) When STN Express is open, the STN Express Main Menu and Toolbar are displayed.



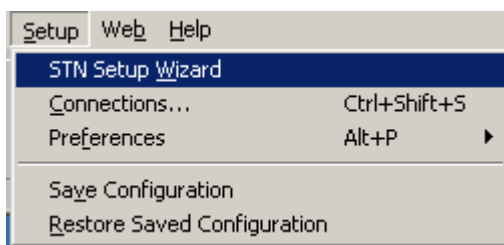
Logon Setup with STN Setup Wizard

Your online connection and logon information are required each time you connect to STN, CAS REGISTRY BLAST or another online host. This information is stored in a logon setup. This documentation provides an example of creating an Internet logon setup with the STN Setup Wizard.

If you do not have any logon setups, the following prompt is displayed when you launch STN Express.

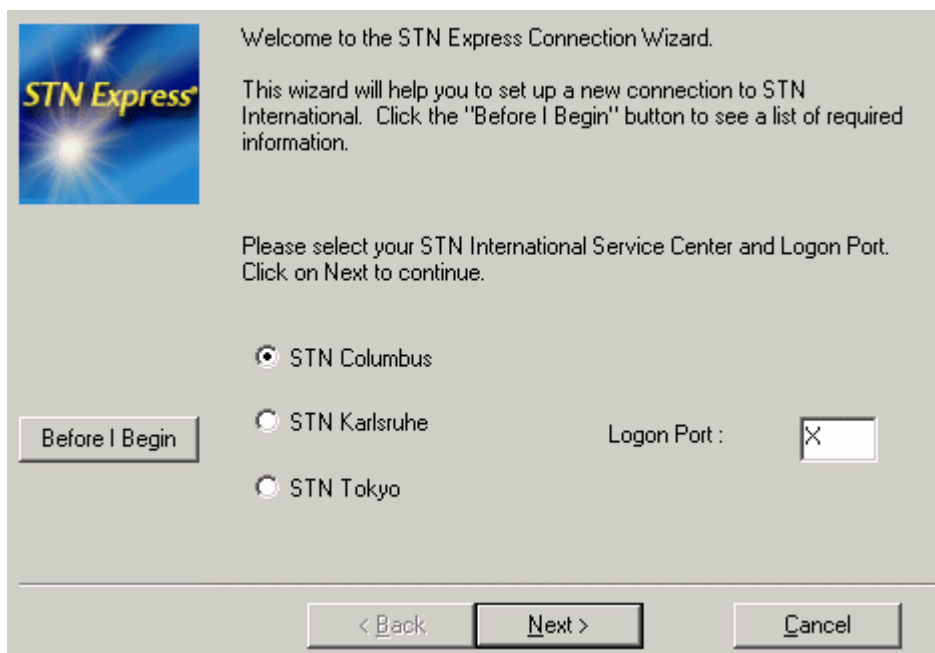


You may also access the wizard from the **Setup** menu.

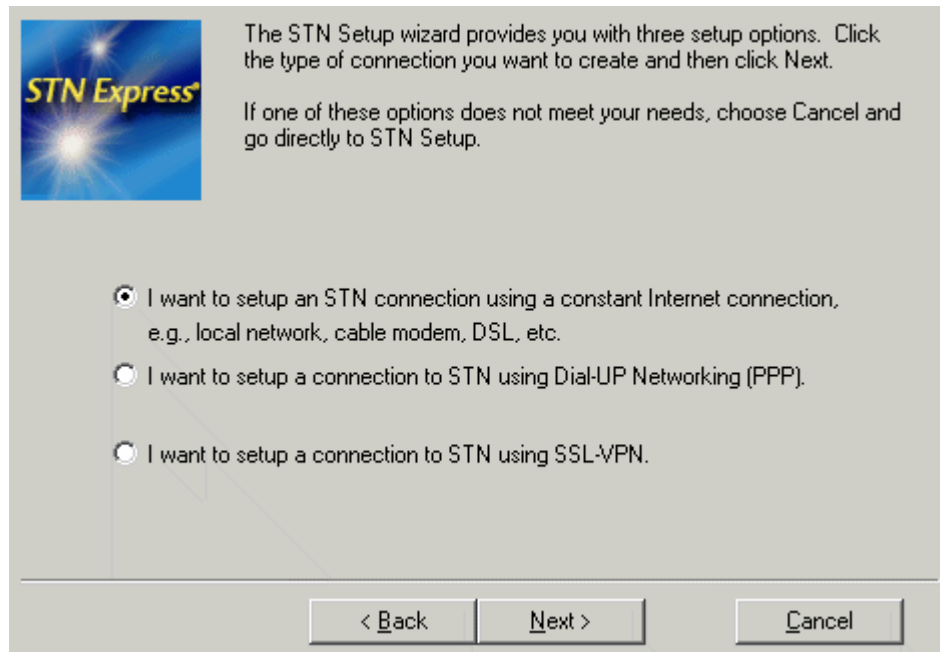


Follow these steps:

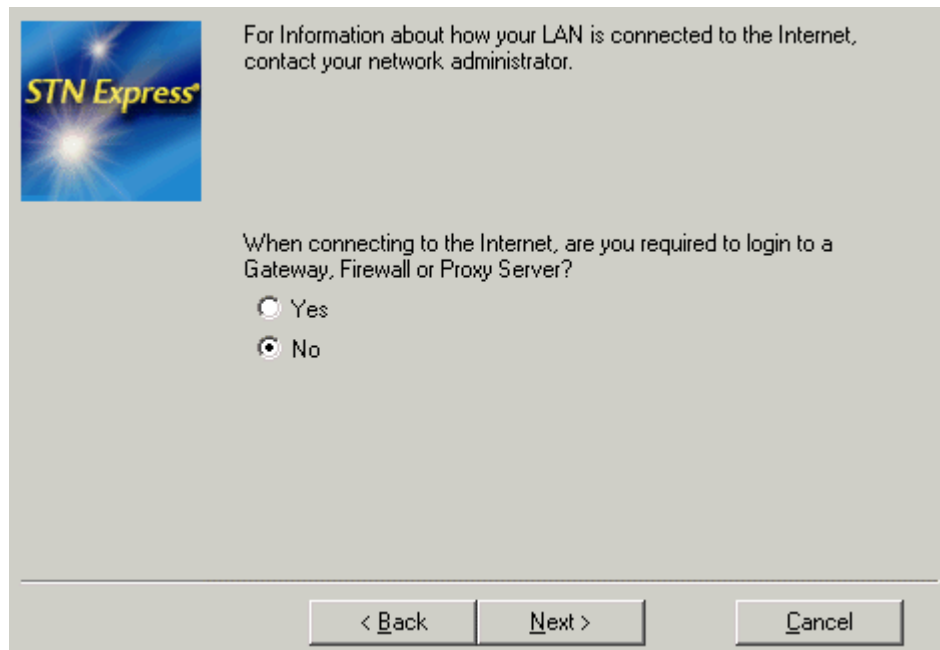
1. Click the **Before I Begin** button on the opening page for details about how to use the wizard.
2. Select the STN Service Center for your account and confirm your STN Logon Port. For commercial accounts, X is usually correct. For other accounts, consult the materials supplied with your STN login ID.
Click **Next**.



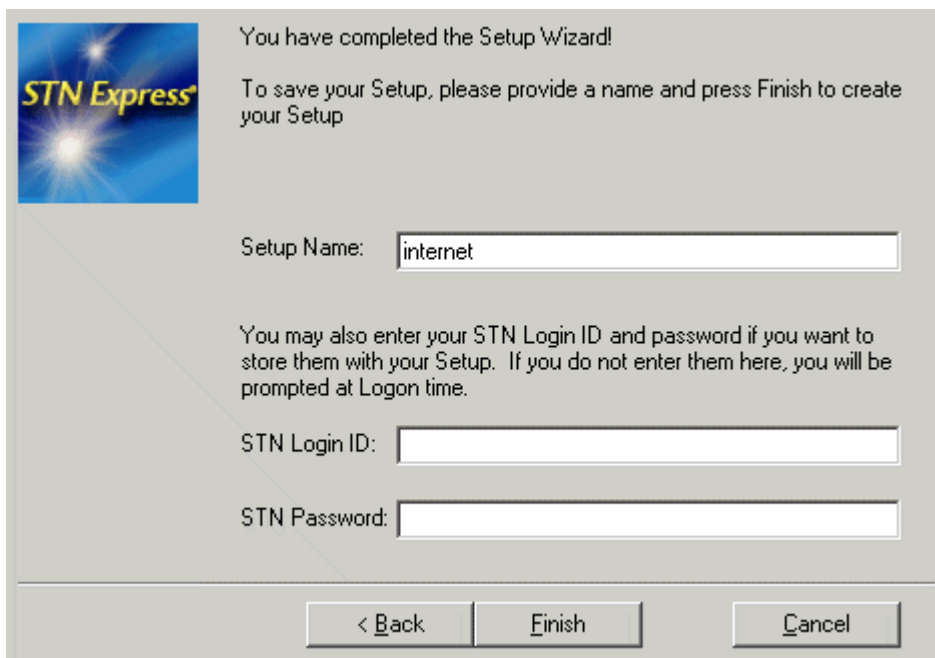
3. The most frequently used type of connection is selected by default. This connection will use the 'Encryption provided by RSA' option. Select **Next**.



4. If you do not have to log on to a firewall or gateway before establishing an Internet connection to STN, accept the default "No" and click **Next**.



5. Enter a name that is meaningful to you for your new logon setup. In this example, 'internet' was used as the Setup Name. Type your STN login ID and password if you want to save them in the setup. Click **Finish**.



The screenshot shows a dialog box titled "STN Express" with a blue starburst logo. The text inside reads: "You have completed the Setup Wizard! To save your Setup, please provide a name and press Finish to create your Setup". Below this is a text input field labeled "Setup Name:" containing the text "internet". Further down, there is explanatory text: "You may also enter your STN Login ID and password if you want to store them with your Setup. If you do not enter them here, you will be prompted at Logon time." This is followed by two empty text input fields labeled "STN Login ID:" and "STN Password:". At the bottom of the dialog are three buttons: "< Back", "Finish", and "Cancel".

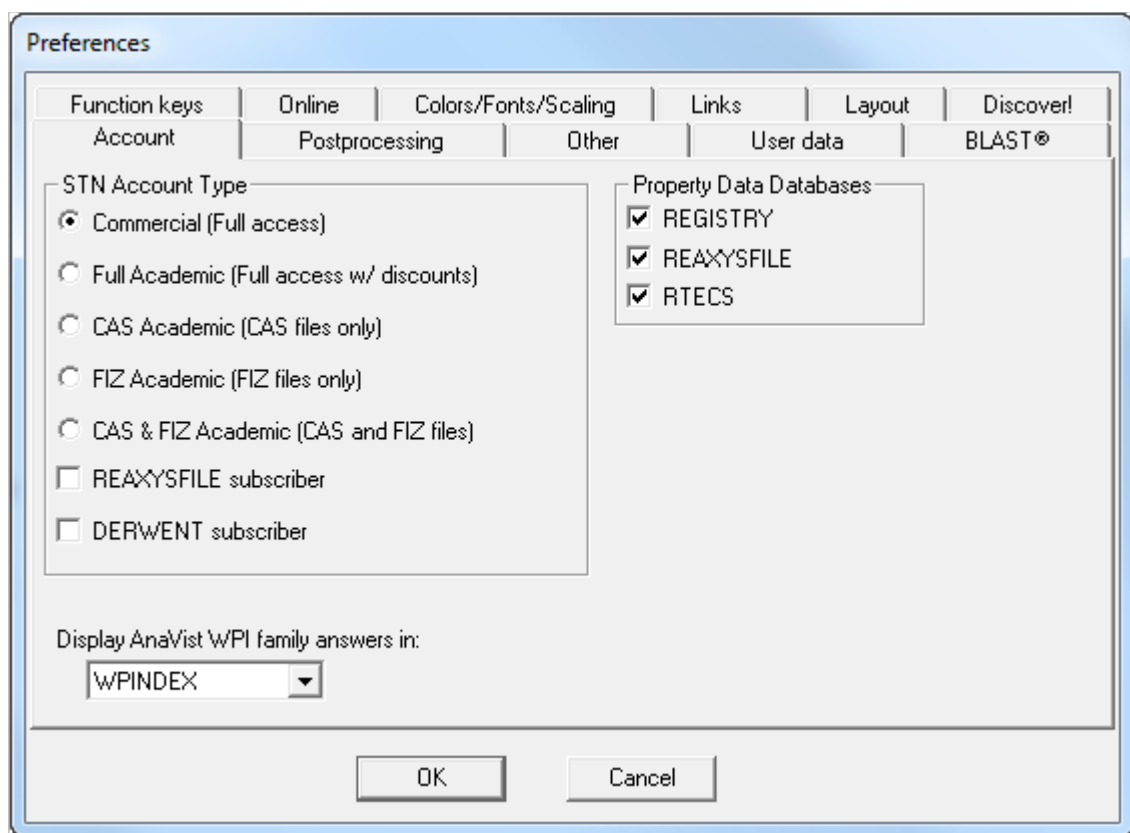
Changing Account Preferences for Academic Accounts

If you have an academic account, you will need to change your Account Preferences in STN Express.

1. Click **Setup** from the Main Menu, then select **Preferences > STN Online and Results**



2. Click the **Account** tab to display the STN Account Type box. Select the type of academic account you have. Under **Property Data Databases**, select the property databases that you are authorized to access. Click **OK**.



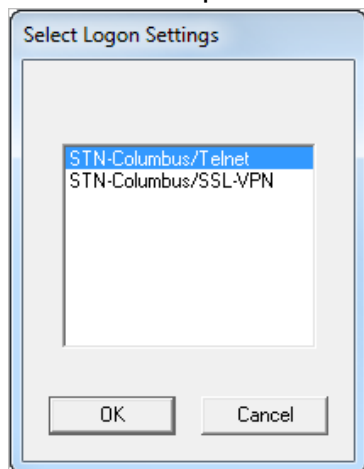
Connecting to STN

Click the **Logon** button

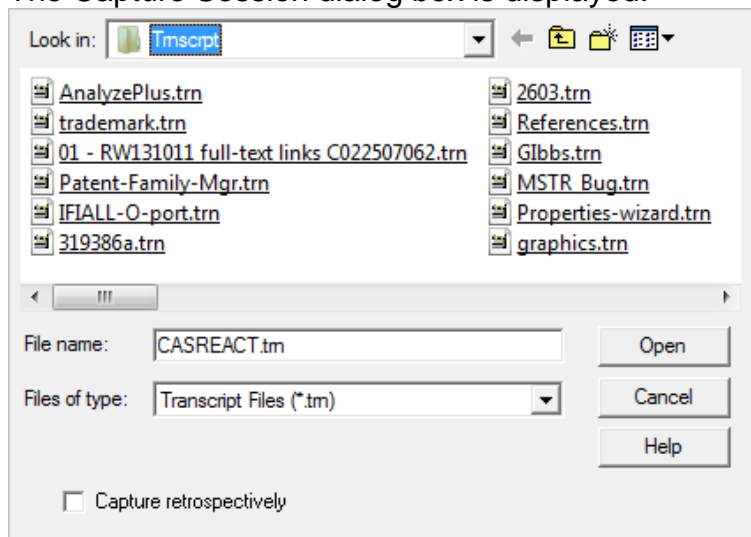


from the toolbar.

1. The *Select Logon Settings* dialog is displayed if you have more than one logon setup. Select a setup name and click **OK**.



2. The *Capture Session* dialog box is displayed.



- a. Type a transcript name in the **File name** box
 - b. Click **Open** to capture a transcript
 - c. Click **Cancel** to continue
3. After STN Express makes the connection and logs you on, the STN arrow prompt (=>) is displayed in the STN Online and Results window.

Connecting to CAS REGISTRY BLAST

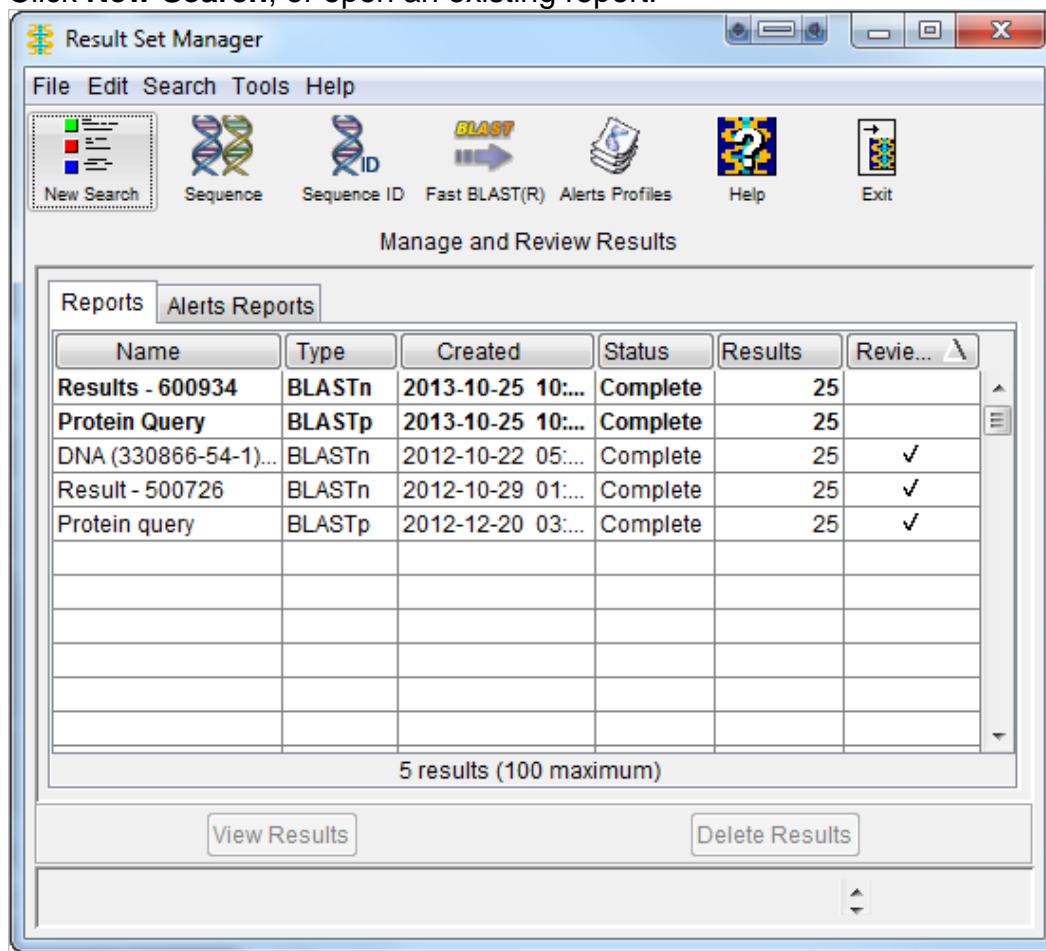
Select the **BLAST** button



from the Main Toolbar, or click **Logon**

on the Main Menu and select **CAS REGISTRY BLAST**. The **Select BLAST Logon Settings** dialog box is displayed.

1. Select the setup containing the login ID and password that you wish to use for BLAST login.
 - If your setup does not contain your login ID and password, you will be prompted to enter them for BLAST login.
 - The CAS REGISTRY BLAST splash screen is displayed, and the Result Set Manager should then appear.
2. Click **New Search**, or open an existing report.



STN Express Architecture and Installers

STN Express Software Architecture

STN Express follows the Microsoft suggested software practices for current Windows operating systems.

The installer uses version-specific folders (“\STN Express 8.x”) for both program and user files so multiple versions of STN Express can be installed on an individual computer.

The installer creates a template of the user files and folders in “\DefaultUser”. That template is copied to the user’s profile on the first execution of STN Express. This allows multiple users on a single computer to have individually customized user files.

The *DefaultUser* folder also contains templates for these files:

- *express.ini* – this file will contain your login setups and the paths to your User Folders and Files
- *stnterm.ini* – this file that will contain your customizations of your online experience

• Program Files

- Files that are essential to run the STN Express program are located in
 - 32-bit systems: *C:\Program Files\STN Express 8.x*
 - 64-bit systems: *C:\Program Files (x86)\STN Express 8.x*
- Sub-Folders of the *STN Express 8.x* folder are:
 - *Jre*: All of the required Java Runtime Environment files
 - *Scripts*: STN Express scripts used in the operation of Express (these are read only)
 - *Template*: Structure Drawing template files
- Multiple versions of STN Express may be installed on one computer using separate version folders. For example:
 - *C:\Program Files\STN Express 8.5*
 - *C:\Program Files\STN Express 8.4*

• Templates for User Files

- Templates of the User Files are created in:
 - Windows XP:
C:\Documents and Settings\All Users\Application Data\STN Express 8.x
 - Windows Vista, Windows 7, and Windows 8:
C:\Program Data\STN Express 8.x
- The *\STN Express 8.x* folder contains:
 - One file: *uninstal.inf*
 - One folder: *DefaultUser*

- The *DefaultUser* folder contains these sub-folders:
 - *AnaVist* - Default location for files exchanged with STN AnaVist.
 - *Data* – configuration files that control STN Express operation
 - Note: these files are managed by STN Express and should not be modified or deleted
 - *MMS* – File used by the Merged Markush Server (MMS) feature of STN Express
 - *Queries* - Default location for structure query files
 - *Trnscript* - Default location for transcript and report files
 - *Uscripts* - Default location for user created scripts.
- **User files:**

Copies of the user folders and files will be placed in the **User Profile** location during the first use of STN Express 8.x. For example, with the Windows User Name “Oliver”:

 - Windows XP:
C:\Documents and Settings\Oliver\My Documents\STN Express 8.x\
 - Windows Vista:
C:\Users\Oliver\Documents\STN Express 8.x\
 - Windows 7 and Windows 8
C:\Users\Oliver\My Documents\STN Express 8.x

Installers - Overview

STN Express offers a choice of installers:

- **Windows Microsoft Installer™ (v8_xmsi.exe)**
Note: the MSI installer is in an executable shell file, which enables several pre-install options and starts the MSI.
- **The classic scripted installer (v8_x.exe)**

The installers are compliant with Microsoft Windows XP, Windows Vista, Windows 7, and Windows 8 Operating Systems. The default installed locations of the STN Express files and folders comply with Microsoft Windows software design “best practices”.

MSI INSTALLER (v8_xmsi.exe)

The executable wrapper file and the MSI installer for STN Express 8.x, contained within, are digitally signed using a VeriSign® / Symantec® code-signing certificate registered to The American Chemical Society. The executable program files are also digitally signed.

The result of the installation is identical to the classic scripted installer provided with this and prior releases. An MSI installer primarily appeals to companies that “repackage” installers or publish them to Active Directory; however, individuals may use the MSI installer. You might be more familiar with the MSI installer screens and interactions since this installer type is widely used with software for Windows systems.

Notes:

- The Windows MSI installer must be run under a domain administrator login, a local administrator login or a login that is part of the local Administrators group.
 - Windows XP: If you are in a Domain, group policy may block running an MSI installer under a User Login. On privately owned computers, that is not usually an issue. *Run As* may be used to start the executable shell file and the elevated permissions will be passed to the contained MSI installer.
 - Windows Vista, Windows 7 and Windows 8 operating systems may allow the MSI installer to start under a USER login, but it will not complete without an administrator login in the UAC pop-up. *Run As* may be used to start the executable shell file and the elevated permissions will be passed to the contained MSI installer.
 - If you do not have administrator level permissions, a warning dialog will display and the installation will terminate (roll-back) before making any system changes.
- We strongly recommend that you accept the default installation path.
- Selecting the Custom installation type will give you several options, including the option to block automatic file updates. An automatic file update will run after installation completes. More information is in the [Automatic File Updates](#) section.
- The installer does not uninstall prior versions.

SCRIPTED INSTALLER: (v8_x.exe)

The scripted installers for STN Express are digitally signed using a VeriSign® / Symantec® code-signing certificate registered to The American Chemical Society. The executable program files are also digitally signed.

Notes:

- WinZip® Pro self-extractor, a 32-bit program is the first step run by the installer. Running the v8_x.exe file will extract files to a temporary folder and then start the main installer, setup.exe.
- The STN Express 8.x installation program will check to see if your system login grants you local or domain administrator permissions on Windows operating systems.
 - If you do not have administrator level permissions, a warning dialog will display and the installation will terminate before making any system changes. (Windows Vista, Windows 7 and Windows 8 UAC [User Account Control] does not permit program installation by non-administrators)
- We strongly recommend that you accept the default installation path.
- There is an option to disable automatic file update upon completion of the installation. More information is in the [Automatic File Updates](#) section.
- The installer does not uninstall prior versions.

STN Express Automatic File Updates

The STN database files may be updated between STN Express software releases. To add value to your STN International searches, new files may be added to STN, existing files may have new data fields, the STN thesaurus may be improved, or a file may be

retired. All of those types of change are communicated to STN Express via **Automatic File Updates**.

Automatic File Update is enabled by default. At the end of the installation process, and when STN Express starts for the first time each day, a standard Microsoft application is used to send a query to <http://casweb.cas.org/stnexp/autoupdate/>, using the standard HTTP port 80. If new support files are available, the automatic update process will start. Depending on the speed of the computer, the bandwidth (speed) of your Internet connection, and the size of the files to be updated, the process may take from 15 seconds to several minutes.

Automatic update might be blocked by your company firewall or proxy servers. In that case, STN Express will present an information window. Some companies use Internet bandwidth allocation servers that could make the auto-update slower than other web processes, or other factors might make the process unacceptably slow for you. If you encountered problems with auto-update, you may wish to turn it off within the current installation. If auto-update is disabled during installation, then it will be disabled within the STN Express program preferences. Auto-update may be enabled or disabled after installation using the Preferences tool.

Disabling auto-update during the install process:

- MSI installer: (*v8_xmsi.exe*)
 - Start the installer.
 - Choose the Custom installation type in the **Setup Type** screen.
 - Uncheck the box labeled “Enable Automatic Updating”
 - Note that there is an information icon – the blue **i** – that provides information to help make the choice.
 - Complete the installation.
- Scripted installer: (*v8_x.exe*)
 - Start the installer.
 - Proceed to the **Setup Option** window.
 - Uncheck the box labeled “Enable Automatic Updating”
 - Note that there is an information icon – the blue **i** – that provides information to help make the choice.
 - Complete the installation.

Enabling auto-update in STN Express

- Start STN Express
- Click on the **Prefs** button in the main toolbar.
- Choose **STN Online and Results** from the drop-down menu.
- Choose the **Other** tab.
- **Uncheck** the option “Shut off automatic updating of support files”.



Manual updating of STN Express Support Files

If you have disabled automatic file updates, you can manually download and install the system data files to bring your STN Express up to date with database changes. Each STN Service Center's License and Download site provides downloads containing the most current Support Files and documentation describing how to install them.

Help

You have the following options for STN Express help:

- Select an option from the **Help** menu on the Main Menu
- Press **F1** or click the **Help** button

Technical Support

CAS Customer Center:

Hours:	8 a.m. – 6 p.m. Eastern Time (Monday-Friday)
Phone:	1-800-753-4227 (North America) +1-614-447-3700 (outside North America) Option 2: General information or account-related questions Option 3: Assistance with search strategies, database content, or using a product Option 4: Technical assistance with software setup, installation and configuration
Fax:	614-447-3751
E-mail:	help@cas.org
Internet:	www.cas.org

In Europe

FIZ Karlsruhe:

Hours:	8 a.m. – 6 p.m. Central European Time (Monday-Friday)
Phone:	+49 7247-808-555
Fax:	+49 7247-808-259
E-mail:	helpdesk@fiz-karlsruhe.de
Internet:	www.stn-international.com

In Japan

JAICI (Japan Association for International Chemical Information):

Hours:	9 a.m. – 5:30 p.m. Standard Time (Monday-Friday)
Phone:	+81 3-5978-3601 (Technical Service) +81 3-5978-3621 (Customer Service)
Fax:	+81 3-5978-4090
E-mail:	www.jaici.or.jp/inquiry.html (Customer and Technical Service)
Internet:	www.jaici.or.jp