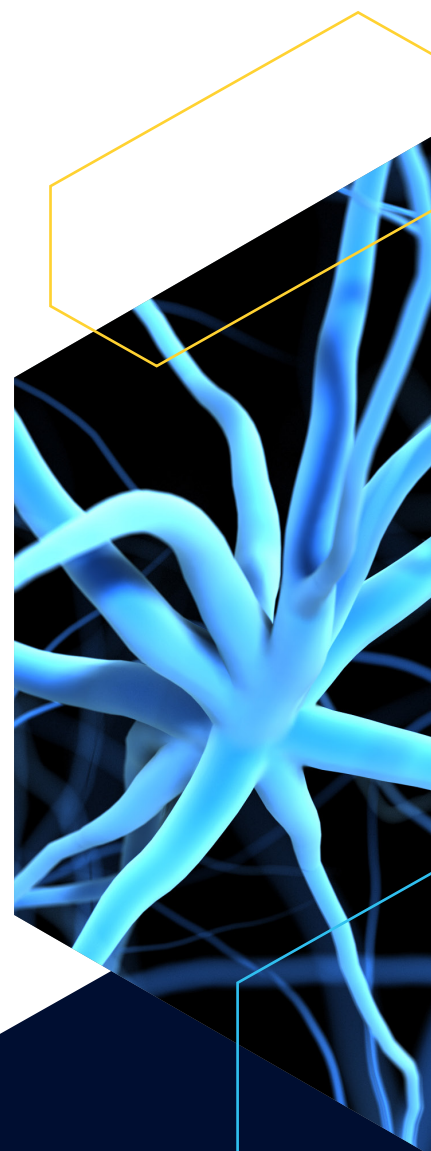


# WELCOME TO CAS SCIFINDER<sup>®</sup>

You can now open your personal CAS SciFinder<sup>®</sup> account!  
Boost your academic career with the world's largest substance  
and reference-based chemistry search engine.

## Save time and drive your research:

- Access step-by-step procedures and protocols.
- Explore sequences and bioactivity data.
- Optimize retrosynthesis plans.
- Visualize the patent landscape.
- Use touch-screen structure drawing.



Contact your library for more details  
on getting started today!

# CAS

A division of the  
American Chemical Society

