

**STN Express<sup>®</sup>**

Version 8.2 for Windows<sup>®</sup>

# Getting Started

June 2007

Copyright © 2007 American Chemical Society.  
All rights reserved.

## Table of Contents

Introduction .....	4
Hardware and software requirements .....	5
Installing STN Express .....	7
Upgrading to Version 8.2 of STN Express .....	8
Opening STN Express .....	8
Logon setup with STN Setup Wizard .....	9
Setup for secure Telnet session .....	13
Changing Account Preferences for academic accounts .....	15
Connecting to STN .....	17
Connecting to CAS Registry BLAST .....	18
Help .....	18
Technical support .....	19

## Introduction

This booklet contains information on:

- installing STN Express
- upgrading to Version 8.2 of STN Express
- creating an STN® logon setup with the STN Setup Wizard
- accessing STN and CAS Registry<sup>SM</sup> BLAST® for a single-user installation

For information on setting up a network installation, see the ReadMe.txt file located in the main STN Express folder (stnexp).

For additional information about connectivity, and answers to frequent questions, visit STN Express Technical Support at [www.cas.org](http://www.cas.org).

## Hardware and software requirements

Computer	450 MHz Intel® Pentium® class or equivalent processor
Operating System	Microsoft® Windows® 2000 or XP SP2
Memory	256 MB RAM  512 MB RAM recommended to use CAS Registry BLAST, Analyze Plus, or post-processing tools
Available Hard Disk Space	70 MB  140 MB required when installation includes CAS Registry BLAST and Merged Markush Service (MMS)
Connection to STN®	<p>Internet connection that supports either the telnet protocol through port 23 or the HTTPS protocol through port 443.</p> <p>Customers with STN-K login IDs can alternatively connect with a local or networked modem.</p> <p>Access to ChemPort®, STN® Viewer™, and online Help on the CAS server requires an HTTP application-level connection through port 80.</p> <p>CAS Registry BLAST, ChemPort, and the SSL-VPN connection option require an HTTPS application-level connection through port 443.</p>

<b>Web Browser</b>	Microsoft Internet Explorer®, Version 6.0 or higher, Mozilla® Firefox®, Version 1.0 or higher, or Netscape Navigator®, Version 6.0 or higher (ActiveX®, Java™, and JavaScript™ enabled)
<b>Monitor</b>	Color monitor, 800 x 600 minimum screen resolution, minimum of 256 colors
<b>Additional Software</b>	Microsoft Excel® 97, 2000, 2002, or 2003 for the Analyze Plus Wizard or CAS Registry Number® and Role Report Wizard

## Installing STN Express

1. Insert the STN Express CD-ROM into the CD-ROM drive to start the STN Express setup program.

If the setup program does not automatically start, double-click the CD-ROM icon to open it and then double-click setup.exe.

2. Install STN Express dialog box is displayed.

Select any or all of the following in the **Setup Options**:

- **Software** - to install the STN Express software
- **Software Documentation** - to install the PDF versions of documentation locally
- **Software for BLAST and MMS** - to install
  - the Basic Local Alignment Search Tool (BLAST) Java plug-in for locating sequences of interest or patent, journal, and GenBank® literature that references those sequences.
  - the MMS (Merged Markush Service) from Questel-Orbit.
- **Start Menu Item** - to create a Windows **Start** menu item for STN Express

Select the appropriate **Setup Type**:

- **Single User** - to install STN Express to your local hard drive
  - **Network Client** - see your Network Administrator for details
  - **Network Server** - for information, click the **View ReadMe** button to view the ReadMe.txt file
3. Click **Install STN Express**. Respond to the prompts to complete installation.

## Upgrading to Version 8.2 of STN Express

1. Insert the STN Express CD-ROM into the CD-ROM drive to start the STN Express setup program.
2. Choose your setup options and select **Single User** from the **Setup Type**.
3. Click **Install STN Express**.

Because you have an existing copy of STN Express, its current location is placed in the dialog box as the default. Click **Yes** to overwrite your existing copy of STN Express.

Note that only files provided by your previous STN Express installation programs are overwritten. Any structures, scripts, transcripts, reports, and logon setups that you have created are retained.

4. Respond to the prompts to complete installation.

## Opening STN Express

1. Launch STN Express from the Windows **Start** menu. By default, an entry has been made under Programs.
2. When STN Express is open, the STN Express Main Menu and Toolbar are displayed.

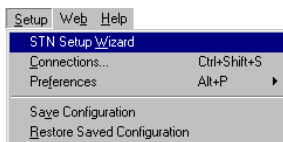
## Logon setup with STN Setup Wizard

Your online connection and logon information are required each time you connect to STN, CAS Registry BLAST, or another online host. This information is stored in a logon setup. This booklet provides an example of creating an Internet logon setup with the STN Setup Wizard.

For the latest logon setup information, visit STN Express Technical Support at [www.cas.org](http://www.cas.org).

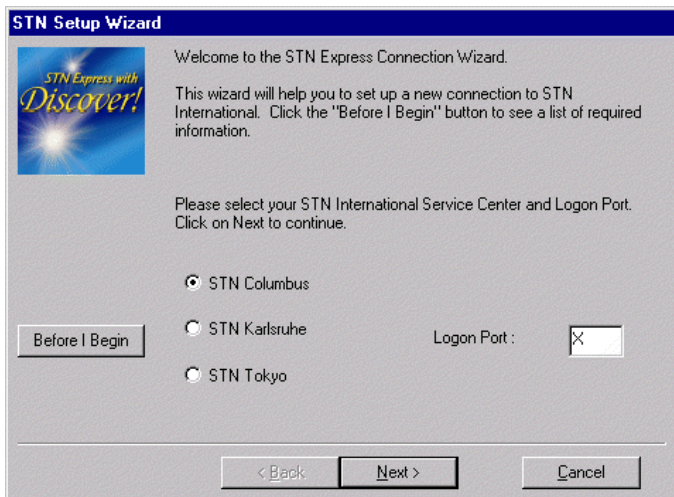
If you do not have any logon setups, the STN Setup Wizard starts when you launch STN Express.

You may also access the wizard via the **Setup** menu.

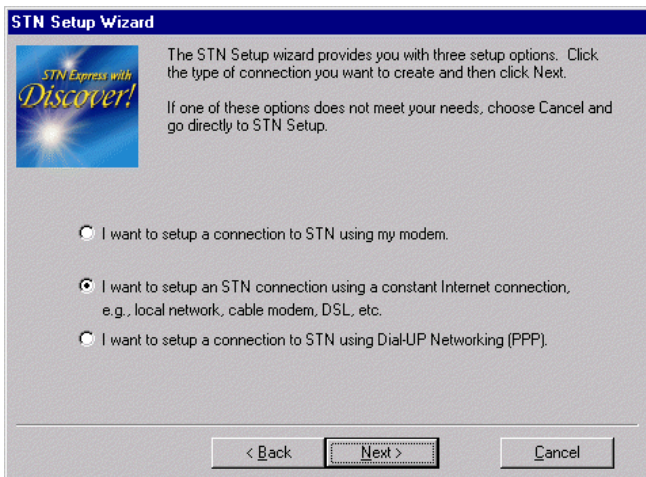


Follow these steps:

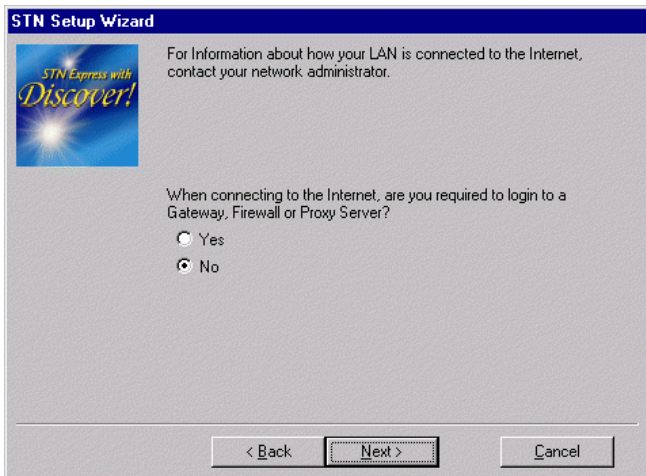
1. Click the **Before I Begin** button on the opening page for details of how to use the wizard.
2. Select the STN Service Center for your account and confirm your STN Logon Port. For commercial accounts, X is usually correct. For other accounts, consult the materials supplied with your STN login ID. Click **Next**.



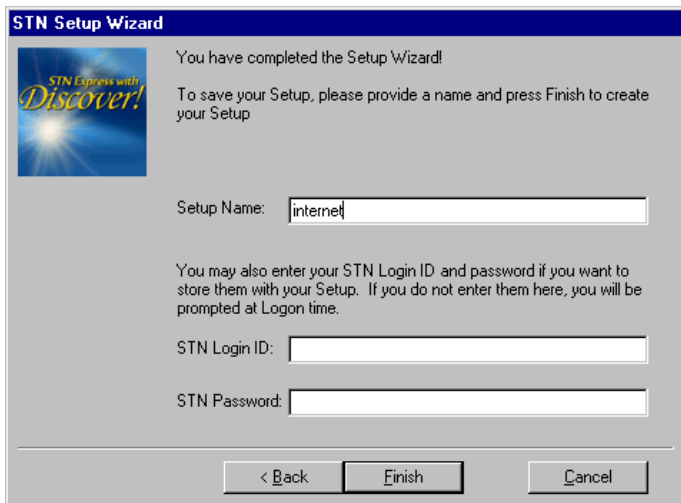
3. Select the middle radio button to specify an Internet connection to STN.



4. If you do not have to logon to a firewall or gateway before establishing an Internet connection to STN, click **No**.



5. Enter a name for your new logon setup. If you choose, type your STN login ID and password to save them in the setup. Click **Finish**.



The screenshot shows a dialog box titled "STN Setup Wizard" with a blue header bar. On the left side, there is a logo for "STN Express with Discover!" featuring a sunburst graphic. The main text area contains the following instructions: "You have completed the Setup Wizard! To save your Setup, please provide a name and press Finish to create your Setup". Below this, there is a text input field labeled "Setup Name:" containing the text "internet". Further down, there is a paragraph: "You may also enter your STN Login ID and password if you want to store them with your Setup. If you do not enter them here, you will be prompted at Logon time." This is followed by two text input fields: "STN Login ID:" and "STN Password:". At the bottom of the dialog, there are three buttons: "< Back", "Finish", and "Cancel".

**STN Setup Wizard**

*STN Express with Discover!*

You have completed the Setup Wizard!

To save your Setup, please provide a name and press Finish to create your Setup

Setup Name:

You may also enter your STN Login ID and password if you want to store them with your Setup. If you do not enter them here, you will be prompted at Logon time.

STN Login ID:

STN Password:

< Back    Finish    Cancel

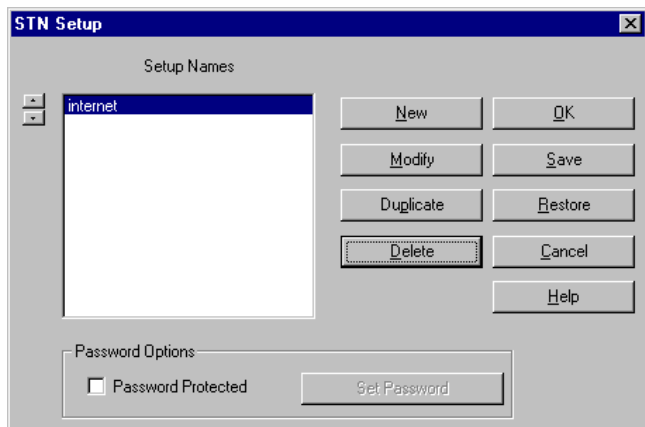
## Setup for secure Telnet session

To run STN Express using a secure Telnet session, follow these steps:

1. Launch STN Express.

2. Click the **Setup** button () on the STN Express toolbar.

3. Create a new Setup or modify an existing one.



4. In the Setup, check the box **Encryption provided by RSA**. Click **OK**.

Setup Name: internet secure Login ID: [ ] OK

Host Name: STN-Columbus Password: [ ] Cancel

Path 1 Path 2 Path 3 Path 4 Host Settings Help

Connect via: Winsock (Internet) Delete Path

Logon Method  
 Standard WINSOCK  
 Custom Configure...

Communication Settings  
 Host Name or IP address: stnc.cas.org  Encryption provided by RSA  
 Port: 23 Advanced  
 Echo: YES


Logoff Method  
 Standard  
 Custom Configure...

5. Click the **Logon** button and log on to STN Express using the Setup for which you checked the encryption box.

Select Logon Settings

internet  
 internet secure

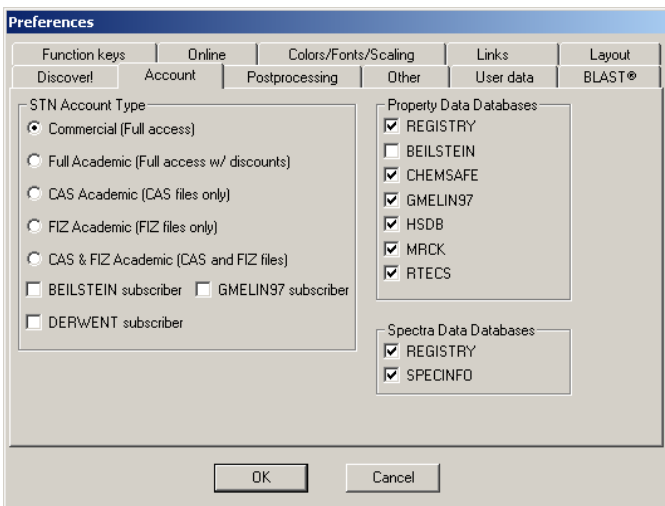
OK Cancel

When you are working in a secure session, the **Secure** icon () displays at the bottom of the STN Express window.

## Changing Account Preferences for academic accounts

If you have an academic account, you need to change your Account Preferences in STN Express.

1. Click **Setup** from the Main Menu. Select **Preferences** and then **STN Online and Results**.
2. Click the **Account** tab to display the STN Account Type box.



3. Select the type of account you have and its features:
  - **Commercial (Full access)** - default setting
  - **Full Academic** - if you have access to STN databases under your academic program
  - **CAS Academic** - if you have access to CAS discounted databases only
  - **FIZ Academic** - if you have access to FIZ discounted databases only
  - **CAS & FIZ Academic** - if you have access only to CAS and FIZ databases under your academic program
  - **BEILSTEIN subscriber** - if you have a BEILSTEIN subscription
  - **GMELIN97 subscriber** - if you have a GMELIN97 subscription
  - **DERWENT subscriber** - if you have a DERWENT subscription
4. Under **Property Data Databases**, select the property databases that the wizards are authorized to access.
5. Click **OK**.

## Connecting to STN



1. Click the **Logon** button (  ).
2. The Select Logon Settings dialog box is displayed if you have more than one setup.

This dialog box is not displayed if you have created only one setup.

Select a setup name and click **OK**.

3. The Capture Session dialog box is displayed.  
Type a name in the **File name** text box to store your online session in a transcript. Click **Open** to capture a transcript. Click **Cancel** to continue the logon process with no transcript.
4. After STN Express makes the connection and logs you in, the STN arrow prompt (=>) is displayed in the STN Online and Results window.

## Connecting to CAS Registry BLAST

1. Click **Logon** from the Main Menu and select **CAS Registry BLAST**.
2. The Select BLAST Logon Settings dialog box is displayed, if you have more than one setup.  
  
Select an Internet setup and click **Yes**. Or click **No** to enter your login ID, password, and STN Service Center manually.
3. The CAS Registry BLAST splash screen is displayed.
4. Enter your login ID, password, and STN Service Center. Click **OK** if you chose a setup that did not include this information or if you clicked **No** in the previous step.
5. The Result Set Manager window of CAS Registry BLAST is displayed. If you have done previous searches using the same login ID, a list of reports is displayed. Click **New Search** to conduct a new CAS Registry BLAST search.

## Help

You have the following options for STN Express help:

- select an option from the **Help** menu on the Main Menu
- press **F1** or click the **Help** buttons for context-sensitive help

## Technical support

### In North America

CAS

STN North America

P.O. Box 3012

Columbus, Ohio 43210-0012 U.S.A.

CAS Customer Care:

Phone: 800-753-4227 (North America)

614-447-3700 (worldwide)

Fax: 614-447-3751

E-mail: [help@cas.org](mailto:help@cas.org)

Internet: [www.cas.org](http://www.cas.org)

### In Europe

FIZ Karlsruhe

STN Europe

P.O. Box 2465

76012 Karlsruhe

Germany

Phone: +49-7247-808-555

Fax: +49-7247-808-259

E-mail: [helpdesk@fiz-karlsruhe.de](mailto:helpdesk@fiz-karlsruhe.de)

Internet: [www.stn-international.de](http://www.stn-international.de)

### In Japan

JAICI (Japan Association for International Chemical Information)

STN Japan

Nakai Building

6-25-4 Honkomagome, Bunkyo-ku

Tokyo 113-0021, Japan

Phone: +81-3-5978-3601 (Technical Service)

+81-3-5978-3621 (Customer Service)

Fax: +81-3-5978-3600

E-mail: [support@jaici.or.jp](mailto:support@jaici.or.jp) (Technical Service)

[customer@jaici.or.jp](mailto:customer@jaici.or.jp) (Customer Service)

Internet: [www.jaici.or.jp](http://www.jaici.or.jp)