

STN News

[STNews Home](#) | [Support & Training](#) | [Database Summary Sheets](#) | [User Documentation](#)

Announcements

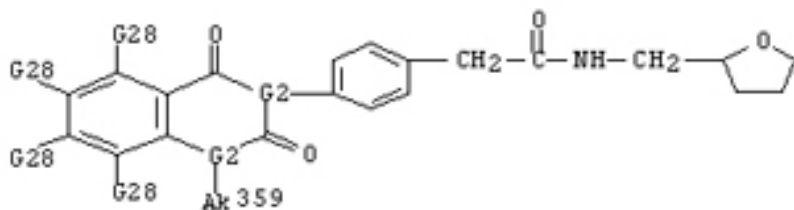
SPOTLIGHT - MARPAT[®] Gets a Makeover

Reviewing MARPAT results just got faster and easier with new enhanced displays. On June 26th, significant enhancements were implemented in MARPAT, an essential chemical IP database on STN that provides structure-searchable Markush representations from chemical patents.

The enhancements provide more recognizable results in the QHIT and FQHIT display formats by assembling the query-focused fragments. The assembled answers increase immediate readability, while making it easier to share MARPAT information with other decision-makers.

Enhanced Display Example

MSTR 1 Assembled



359: alkyl <containing 1-8 C> (opt. substd. by G7)
G2 = CH

Upcoming Training



Visit [CAS Learning Solutions](#) for the 2011 schedule of STN e-Learning and training opportunities

CAS Learning Solutions is the place to go for instructor-led and on-demand STN training.

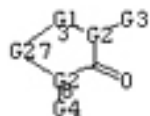
Be sure to check out the latest e-Seminar "Legal Status - A Case Study," presenting a comprehensive search of GE's patent portfolio, including patent rights they have bought and sold.

STN E-Learning Tutorials

Stumped when it comes to creating flexibility in your structure searches? Need a refresher on how to draw a G-group or add a Variable Point of Attachment (VPA)? Let STN Draw curriculum be your answer. This curriculum provides quick interactive tutorials on how to create these types of queries and covers basic drawing skills.

Old Display Example for Same Record

MSTR 1

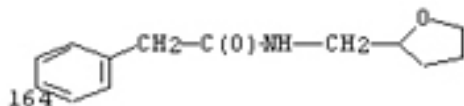


G1 = 11



G2 = CH

G3 = 164



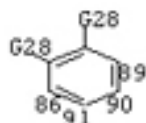
G4 = alkyl <containing 1-8 C> (opt. substd. by G7)

G6 = O

G27 = 40



G29 = 89-3 90-6 86-39 91-41



In addition, two new MARPAT display formats, FQHITEXG and QHITEXG are now available. Along with the traditional FQHIT and QHIT information, these formats provide definitions for all unmatched G-groups shown in the answer for a more complete picture of the result.

For more information on these enhancements, see Tip #13 in the MARPAT database, read the [full database news](#) or attend one of the MARPAT Enhanced Displays e-Seminars on July 14 and July 21 via [CAS Learning Solutions](#).

STN on the Websm enhanced with new Patent Family Assistant and availability of updated Structure Plug-In

On June 18, 2011, STN on the Web was updated to include a new Patent Family Assistant and an updated Structure Plug-in.

The new Patent Family Assistant is located in the *Assistants* folder (previously *Search Assistants* folder) and allows you to:

To see all of the CAS product training options, visit <http://learningsolutions.cas.org> to register and log in today. Frequently asked questions and quick reference cards are available to help new users with Learning Solutions.

Visit the STN events calendar in the [CAS Learning Solutions](#) resource center for titles, descriptions, schedule and locations of all STN e-Learning and training for 2011.

STN e-Seminars

July 14

STN Patent Forum: Searching for Biosimilars on STN

July 14

MARPAT Display Enhancements

July 21

MARPAT Display Enhancements

July 26

Fellowship of the Ring

August 11

Fellowship of the Ring

August 30

STN Patent Forum: Approaches for Analysis of Patent Data on STN

[Register now!](#)

STN Patents and Pizza

July 12

Going Viral in Alexandria, VA

Learn how to use STN tools including thesauri, sequence motif searching and CAS roles to find information regarding viral culture, diagnostics, therapeutics, genetic engineering and more.

- ✚ Extract the first member of each patent family: Use this feature to include only a single member from each patent family in your answer set.
- ✚ Remove twin multiple basics from patent families*: Use this feature to manage the multiple basic patent content of a CASM/CAplusSM answer set with the option to retain the WO basic patent, national basic patent with oldest priority, patent with the oldest application date or patent with the oldest publication date.
- ✚ Customize displays of patent family results: Save time and money by selecting different display formats for the first family member of a patent family vs. equivalents.

Take advantage of improved structure drawing and searching capabilities available with the updated Structure Plug-in (version 8.5).

*This feature of the new Patent Family Assistant is also new to STN.

Database News

✚ **INPADOC databases enhanced with first page images (June 2011)**

The INPADOC databases, INPADOCDB and INPAFAMDB, have been enhanced with first page images for patent publications of eight major patent authorities. This new graphical information greatly supports relevance checking of technology search results. [Read more >>](#)

✚ **INPADOC: Delay of German patent coverage (June 2011)**

The European Patent Office informed us about significant delays of the coverage of German bibliographic and legal status data in INPADOC from the week 25/2011 (June 12-8). [Read more >>](#)

✚ **WPINDEX/WPIDS/WPIX: DWPI Country Coverage Update (June 2011)**

Derwent World Patents Index® (DWPI) now also covers patents from Poland and Hong Kong. This brings the number of authorities covered in DWPI to 47, further strengthening the global coverage of editorially enhanced content in the file. [Read more >>](#)

August 9

Searching Special Fields in CAS REGISTRY® in Alexandria, VA

[Register now!](#)

FIZ Karlsruhe e-Seminars

July 19

Multifile Patent Sequence Searching on STN

August 9

Searching Surfactants and Detergents on STN

August 25

Searching Surfactants and Detergents on STN

[Register now!](#)

STN Virtual Classes

If you are new to database searching, you are encouraged to attend these classes in the order shown in the Learning Paths, since each one builds on concepts and skills covered in preceding sessions. Refer to the Learning Path for STN Virtual Classes (111.200) found in the Learning Solutions resource center.

[Register now!](#)

STN Open Practice Sessions

July 8

9:30 am – 11:30 am EDT

July 28

3:00 pm – 5:00 pm EDT

August 5

9:30 am – 11:30 am EDT

August 25

🔗 PATDPA database updates to end in June 2011 (May 2011)

The German patent database PATDPA will no longer be updated after June 16, 2011. [Read more >>](#)



Set up an RSS feed to keep informed. Receive an alert from CAS whenever important news is available.

Take Note

STN Security – Be Protected

Security is on everyone's mind these days. Here we present the first in a two part feature on how to make your STN sessions as secure as possible.

Secure Your Password

Regularly changing your password will ensure your STN account stays secure. Use the SET PASSWORD command, and use a password not easily guessed.

Criteria:

- 🔗 4 to 8 alphanumeric characters (longer is more secure)
- 🔗 two characters must differ from your current password
- 🔗 two characters not found in your STN login ID

If you use the auto-logon feature of STN Express®, be sure to update your stored password when you change your STN password.

1. Select *Setup* from the main toolbar, select your STN setup and click *Modify*.
2. Delete the contents of the *Password* field, enter your new password and then click *OK*.
3. When prompted, enter your new password again and click *OK* one more time.

3:00 pm – 5:00 pm EDT

[Register now!](#)

Upcoming Tradeshows

July 4-8
St. Petersburg, Russia
[ACN 2011](#)

July 6-8
Antwerp, Belgium
[1st International Conference on Sustainable Chemistry](#)

July 23-26
Philadelphia
[104th AALL Annual Meeting](#)

CAS Customer Center Each month we'll provide answers to real customer questions. This month we answer your training questions.

Q: Are new features of the Patent Family Assistant for STN on the Web available in STN Express?

A: The following capabilities are already available in the Patent Family wizard in STN Express:

- Extract the first member of each patent family

- Customize displays of patent family results The Consolidate multiple patent groupings capability is expected to be released for STN Express in August 2011.

Q: Why are some of my answers in the MARPAT database display only partially assembled?

A: Some MARPAT answers do not fully assemble for several reasons such as multiple instances of a hit G-group, multiple hit alternatives for a single G-group and a G-group that

Read part two next month as we continue STN Security with *RSA Encryption* and securing your session on STN on the Web and STN Easy®.

At Your Command - Join us each month to discover tips on how you can get the most out of the STN command language.

ANALYZE Display Options: Display what you want in your preferred order.

Want to save time and money organizing and analyzing your results?

By default, ANALYZE extracts terms from specified display fields and allows you to view just the desired information you need at a reduced cost. By default, displaying the L-number created by ANALYZE shows the 10 most frequent terms display in order of occurrence. Options are available for changing sort order, number of terms displayed and specialized content.

Sort Order

DISPLAY ALPHA: Change sort order to alphabetical

DISPLAY DOC: Change sort order to document

Number of Terms

DISPLAY TOP25: Displays top “n” terms in current sort order

DISPLAY DGT10: Displays terms with document count greater than “n”

DISPLAY WITH “US”: Displays terms containing specified string in quotes

DISPLAY ENTIRE: Displays all terms in current sort order

Specialized Content

DISPLAY DELIMITED: Terms appear in delimited format for post-processing

represents a repeating group. The assembly is based on the hit highlighting data only, and does not have knowledge of the user query. Even partial assembly is valuable and can save a substantial amount of time.

Q: How can I display only the CAS Registry Number® and structure from CAS REGISTRY structure search within the coordinating CAplus records that have been indexed with a biological role indicator?

A: Cross-over the L# from the REGISTRY structure search with the appropriate Role Code and display the CAplus records with the ‘hitstr’ display format. [See example.](#)

Q: How can I limit my CAplus patent answer set to only answers where at least one patent equivalent was published before a specific date.

A: Since CAplus records are built into inventions with equivalent applications and granted patents grouped into one record, include in the query a numeric value (or range) using the /PD search field. [See example.](#)

By choosing the date in => s L1 and pd<19711231, any CAplus record with an equivalent published prior to 1970 will be included in the answer set.

Presentations

[Traditional Medicine Patents Lead to Enhanced Drug Discovery from Natural Products](#)

At the 241st ACS National Meeting & Exposition, John Zabilski, senior product manager at CAS, presented World Traditional Medicine success

=> D DOC TOP5

L5 ANALYZE L3 1- CT : 6746 TERMS

TERM #	# OCC	# DOC	% DOC	CT
1	985	977	100.00	INTERLEUKIN 11
2	723	718	73.49	INTERLEUKIN 6
3	650	645	66.02	HUMAN
4	620	616	63.05	INTERLEUKIN 3
5	622	614	62.85	INTERLEUKIN 2

=> D ALPHA WITH "ANTIGENS"

L5 ANALYZE L3 1- CT : 6746 TERMS

TERM #	# OCC	# DOC	% DOC	CT
435	6718	361	36.95	ANTIGENS
572	102	101	10.34	AUTOANTIGENS
1166	3684	340	34.80	CD ANTIGENS
1973	3	3	0.31	EPSTEIN-BARR VIRUS NUCLEAR ANTIGENS
2588	9	9	0.92	HEPATITIS B ANTIGENS
2638	2561	209	21.39	HISTOCOMPATIBILITY ANTIGENS
3579	156	111	11.36	MELANOMA-ASSOCIATED ANTIGENS

Discover additional useful display options by viewing the user aid: [STN Quick Reference Card - ANALYZE and TABULATE](#)

Be sure to join us next month for another opportunity to take command of your search.



At Science IP we are often asked how we perform comprehensive searches, assuring that a search retrieves as many relevant records as possible.

This depends on the concept of **recall**—the number of relevant records retrieved in a search versus a theoretical number of relevant records available, which is an unknown. You can help maximize recall of searches by:

- 📖 Training continuously with [CAS Learning Solutions](#) and attending patent conferences
- 📖 Staying current on database indexing policies and precision search tools on STN
- 📖 Practicing to gain years of cumulative searching experience

Comprehensive structure searching of sugars in CAS

stories, specific examples and content in CAPlus.

[Chemical Information in the New World of Patents](#)

At the 241st ACS National Meeting & Exposition, Chris McCue, vice president of marketing, presented challenges in finding chemistry in patents, CAS' complete coverage of disclosed research and expert indexing, and exhaustive substance coverage from patents.

[CAS REGISTRY - Maintaining the Gold Standard](#)

At the 241st ACS National Meeting & Exposition, Roger Schenck, content planning manager at CAS, presented how the CAS substance collection has grown over the years and how CAS maintains REGISTRY as the gold standard of substance information.

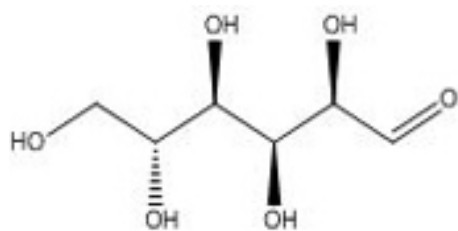
[Key Sources for Pharmaceutical and Chemical Literature and Patent Searching](#)

At the 241st ACS National Meeting & Exposition, Dr. Elaine Cheeseman, Science IP, presented limitations of free web-based patent databases, STN access to key scientific and technical databases, clusters of STN databases in all areas of science, STN searching and search techniques and representation of Chinese patents in CAPlus.

[What Patent Searchers Need to Know from Patent Attorneys](#)

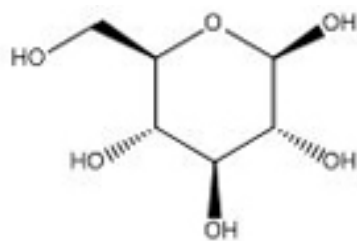
At the 241st ACS National Meeting & Exposition, Dr. Michael D. Mullican, Science IP, presented information patent searchers need to know from patent attorneys and information patent attorneys should know about search tools and tactics.

REGISTRY can be challenging. Sugars may exist in solution as a mixture of open-chain and closed-ring structures with different registry numbers.



D-glucose

CAS RN 50-99-7



beta-D-glucose

CAS RN 492-61-5



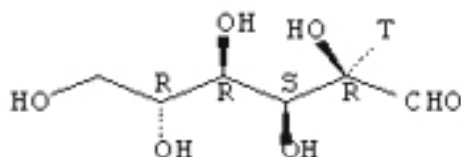
International Year of
CHEMISTRY
2011

For the most comprehensive retrieval, search both structures and combine the results, as STN doesn't modify your structure query to retrieve both forms.

L1 50-99-7
L2 492-61-5
=> S L1 EXA FUL;S L2 EXA FUL
L3 446 SEA EXA FUL L1
L4 407 SEA EXA FUL L2
=> S L3 or L4
L5 853 L3 OR L4
=> D SCAN L5

L5 853 ANSWERS REGISTRY COPYRIGHT 2011 ACS on
STN
IN D-Glucose-2-C-t, labeled with carbon-14 (9CI)
MF C6 H11 O6 T

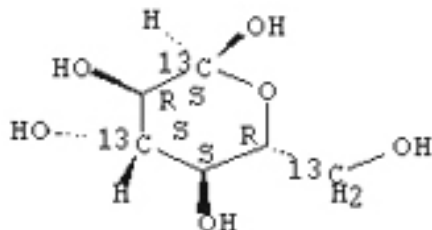
Absolute stereochemistry.



HOW MANY MORE ANSWERS DO YOU WISH TO SCAN? (1):1

L5 853 ANSWERS REGISTRY COPYRIGHT 2011 ACS on
STN
IN .alpha.-D-Glucopyranose-1,3,6-13C3 (9CI)
MF C6 H12 O6

Absolute stereochemistry.



HOW MANY MORE ANSWERS DO YOU WISH TO SCAN? (1):

Faced with a challenging search or require comprehensive results? Contact the expert research staff at [Science IP](#).

Patent Pending – The "America Invents Act" takes additional steps towards passing

On June 23, 2011, the House of Representatives passed H.R. 1249, the renamed Leahy-Smith America Invents Act, that proposes changes to 35 U.S.C. patent law. The bill that passed includes a compromise on patent fee diversion.

Key changes proposed include:

1. Movement towards a First Inventor to File system from the current First To Invent system with a one year grace period for disclosure of patent materials
2. USPTO given authority to set fees and reductions to patent fee diversion outside the patent office
3. A new provision for Post-Grant review where challenges may be made on any ground within a set time (12 months in the revised bill) from grant or reissue and revisions to the existing inter partes reexamination procedure

The bill must now be reconciled with the Senate's version, S.23 before moving forward.

The current version of the bill, Report 112-98, and all congressional actions is available at [H.R. 1249](#) on the [Library of Congress](#) website.

Passing Science – Compliments to Rosalyn Yalow

As one of only 10 women to be awarded the Nobel Prize in Physiology or Medicine, Rosalyn Yalow is recognized for her development of the radioimmunoassay (RIA) technique, first applied to research which helped determine the basis for type 2 diabetes. The Nobel Laureate died on May 30, 2011.

During the late 1930s, nuclear physics fascinated Yalow as newly discovered nuclear fission brought about both nuclear warfare and radioisotopes. Determined, Yalow earned a place at the University of Illinois and graduated in January 1945 with a Ph. D. in nuclear physics.

Yalow's RIA technique allowed scientists to determine the concentrations of blood components and peptide hormones with specificity and sensitivity never before achieved. She was awarded the Nobel Prize in 1977.

RIA has been applied to multiple species (e.g., monkeys, marsupials and sea hares) and peptides (e.g., growth hormone (CAS Registry Number (RN) 9002-72-6), gastrin (CAS RN 9002-76-0), adrenocorticotrophic hormone or ACTH (CAS RN 9002-60-2) and cholecystokinin (CAS RN 9011-97-6)).

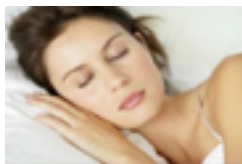
Additionally, the RIA technique has been useful in detecting gastrointestinal peptides and neuropeptides in diabetes, cancers and hormone disorders.

CAS Activities



Colors of Chemistry

To engineers of the iconic racing red Ferrari, weight is everything. The high performance of this legendary Italian sports car owes to careful consideration of how much weight each of its parts contributes to the whole. With the inevitable demand for a more environmentally friendly Ferrari, engineers took on the notoriously heavy rechargeable battery of a hybrid engine. [Read more >>](#)

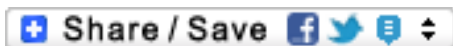


Media Library

Discover how researchers are using SciFinder to help combat the increasing bed bug epidemic by using natural resources. [See Video >>](#)



Follow us on STNInfo



[About CAS](#) | [Our Expertise](#) | [Solutions](#) | [Products & Services](#) | [Support & Training](#) | [News & Events](#)



A division of the American Chemical Society

Copyright © 2011 American Chemical Society All Rights Reserved

2540 Olentangy River Road, Columbus, Ohio 43202, USA

[Subscribe](#) | [Unsubscribe](#) | [Legal](#) | [Contact Us](#)