

# Getting Started with SciFinder<sup>®</sup> 2007

*for Mac OS X*

---

June 2007

**Copyright © 2007 American Chemical Society. All Rights Reserved.**  
SciFinder and the SciFinder logo are trademarks or registered trademarks of the  
American Chemical Society. Mac OS X is a trademark of Apple, Inc.,  
registered in the U.S. and other countries.



---

# Getting Started with SciFinder<sup>®</sup> 2007 for Mac OS X

Welcome to SciFinder 2007 for Mac OS X! This guide provides information you need to start using SciFinder, the award-winning research tool that assists scientists and researchers in locating and processing information on a wide variety of chemical and chemical science-related topics.

<b>Topic:</b>	<b>See page(s):</b>
SciFinder Features	4
SciFinder Content	5-6
Optional Features	7
Hardware and Software Requirements	8
Starting SciFinder	9-10
Explore	11
Locate	12
Browse	13
Keep Me Posted	14
SciFinder Help and Resources	15

---

## SciFinder Features

Enhancements for SciFinder 2007 for Mac OS X include:

- Combine two answer sets of the same kind: reference, substance, or reaction
- Access journal titles
  - View full journal titles in Analyze by Journal Name histograms
  - Include abbreviated and full journal titles in Tagged and Quoted Save As formats
- Explore or Refine from a substance display by inserting a copied structure directly into the Structure Drawing window
- Export commercial source information to Microsoft Excel®
- Print substance records in grid format

SciFinder also features:

- Exploring by Chemical Substance (including substructures, with SSM), Reaction Structure, Research Topic, Author Name, Company Name or Organization, and more
- Removal of duplicate references
- Sorting, analyzing, and refining answer sets
- Citation searching and linking
- Linking from substance answers to detailed substance records, references, commercial sources, regulatory information, and reactions
- Saving and printing results
- Accessing full-text documents via the ChemPort® Connection<sup>SM</sup>
- Browsing tables of contents of scientific journals
- Keep Me Posted for current awareness
- Linking to Internet resources

---

## SciFinder Content

SciFinder retrieves information contained in databases produced by Chemical Abstracts Service (CAS) as well as the MEDLINE database from the National Library of Medicine. All records are in English.

The **CAPLUS**<sup>SM</sup> database includes more than 27 million document records from nearly 9,500 journals and 150 countries from the late 19th century to the present. Document sources include journals, patents, conference proceedings, research disclosures, books, dissertations, technical reports, and more. The more than 5 million patent records are from over 50 active patent-issuing authorities. CAPLUS covers a broad spectrum of scientific and technical information from chemistry, biology, physics, engineering, and related sciences.

The **MEDLINE** database, which also includes OLDMEDLINE, covers biomedical literature from more than 4,780 journals and 70 countries. The database includes more than 16 million biomedical document records from 1950 to the present. MEDLINE also includes IN-PROCESS records, which have not been completely indexed, covering the most current documents in MEDLINE.

The **CAS REGISTRY**<sup>SM</sup> database provides you with access to more than 31 million searchable structures along with over 58 million biosequences. For these records, you may access structure diagrams, names, molecular formulas, properties, and more.

The **CASREACT**<sup>®</sup> database provides access to more than 13 million single and multistep organic reactions from 1840 to the present. SciFinder displays reactions including the reactants, reagents, products, catalysts, solvents, reaction conditions, and reference information.

For more than 13 million substances, you may obtain chemical source information from the **CHEMCATS**<sup>®</sup> database. Chemical source information, including supplier addresses, is derived from more than 900 chemical catalogs and libraries. Regulatory information for more than 245,000 substances from 1979 to the present is available from the **CHEMLIST**<sup>®</sup> database, including substance identity information, inventory status, sources of information, and compliance information.

For more information about the databases and their content, visit [www.cas.org](http://www.cas.org).

---

The information you can find in SciFinder includes:

- **Document Information**

- Title
- Author/inventor
- Company name/corporate source/patent assignee
- Publication year
- Source, publication, date, publisher, volume, issue, pagination, CODEN, ISSN
- Patent identification, including patent, application, priority, and patent family information
- Abstract
- Indexing
- Supplementary terms
- Citations
- Substances, sequences, and reactions discussed within the document

- **Substance Information**

- Chemical names
- CAS Registry Numbers®
- Molecular formulas
- Structure diagrams
- Sequence information, including GenBank® and patent annotations
- Property data
- Commercial source information from chemical substance supplier catalogs
- Regulatory information
- Editor notes
- Documents in which the substance is referenced
- Reactions in which the substance participates
- A list of other publicly available databases from the STN online service, where additional information related to the substance may be located

- **Reaction Information**

- Reaction diagrams, including reactants, reagents, products, catalysts, solvents, and conditions
- Documents in which the reaction is referenced
- Additional reactions, references, substance details, commercial sources, and regulatory information for all reaction participants

---

## Optional Features

Optional features for SciFinder are briefly described below. For details about the features, see the SciFinder online Help.

### SciFinder Substructure Module

You have the option to purchase the SciFinder Substructure Module (SSM). The module allows you to:

- Search your query structure as a substructure of a more complex structure
- Conduct a similarity search
- Draw variables and R-groups, i.e., lists of atoms, shortcuts, and/or variables
- Prohibit substitution and ring fusion at particular nodes and bonds
- Preview results to estimate the number of answers and view sample answers
- Draw stereo bonds and automatically analyze answers in terms of the specified stereo features
- Analyze your answers by precision as part of your initial search
- Analyze answers by real-atom attachments, variable group composition, and R-group composition
- Refine structure answer sets by property data

### SciFinder Subscription

A SciFinder subscription provides features that are available only to subscribers:

- Retrieve related substances and reactions for a reference answer set
- Retrieve related reactions for a substance answer set
- Include Variable Attachment Positions and Repeating Groups in structure and reaction drawings
- Click on any reaction participant to quickly access related information, including additional reactions and roles, references, commercial sources, and regulatory information

---

## Hardware and Software Requirements

**Computer:** An Apple® Macintosh® with an Intel x86 or Power PC G4 or G5 processor

**Operating System:** Mac OS X 10.3 or 10.4

**Available Hard Disk Space:** 65 MB

**Connection:** TCP/IP connection to CAS via the Internet, and Z39.50 application-level connection to CAS through port 210

Accessing full text via ChemPort® and online Help files on the CAS server requires an HTTP application-level connection via Port 80.

**Monitor:** Color monitor capable of displaying 256 colors with 1024x768 screen resolution

**Printer:** High-quality graphics printer, e.g., laser or inkjet

### Optional Software

**Web Browser:** Safari® (OS X default), or a Mac OS X compatible version of Netscape®, Mozilla Firefox™, or Microsoft® Internet Explorer (MSIE)

A web browser is needed to access full text, online Help, and other Internet resources within the **Tools** menu.

- Java™ and JavaScript™ must be enabled.
- Cookies must be accepted for some features in ChemPort.

**PDF Reader:** Preview (OS X default) or Adobe® Reader®, version 5.0 or higher

A PDF reader is needed to display PDF documents available via the CAS web site and ChemPort.

**Microsoft® Excel®:** Excel 2004 (Mac OS X compatible version)

Excel is needed for the Export CHEMCATS® data to Microsoft® Excel® feature.

## Starting SciFinder

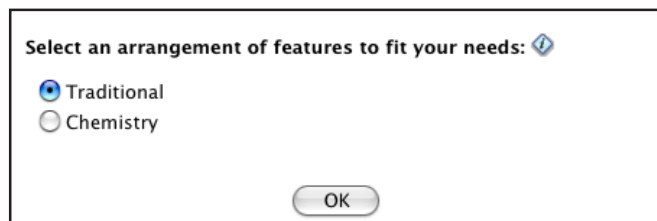
Installation instructions are available on the myCAS download page or you may consult the Site Administrator for your organization for installation information. Please work with your Site Administrator to install SciFinder 2007 for Mac OS X. Once it is installed properly, you can log on and begin searching.

To start SciFinder:

1. Double-click the SciFinder icon created during installation or on the Desktop or Dock alias if you have created one.
2. When the SciFinder 2007 for Mac OS X splash screen displays, enter your login ID and password. Then click **OK**.
3. You are asked periodically to review the SciFinder License Agreement. Click **Accept** to continue.

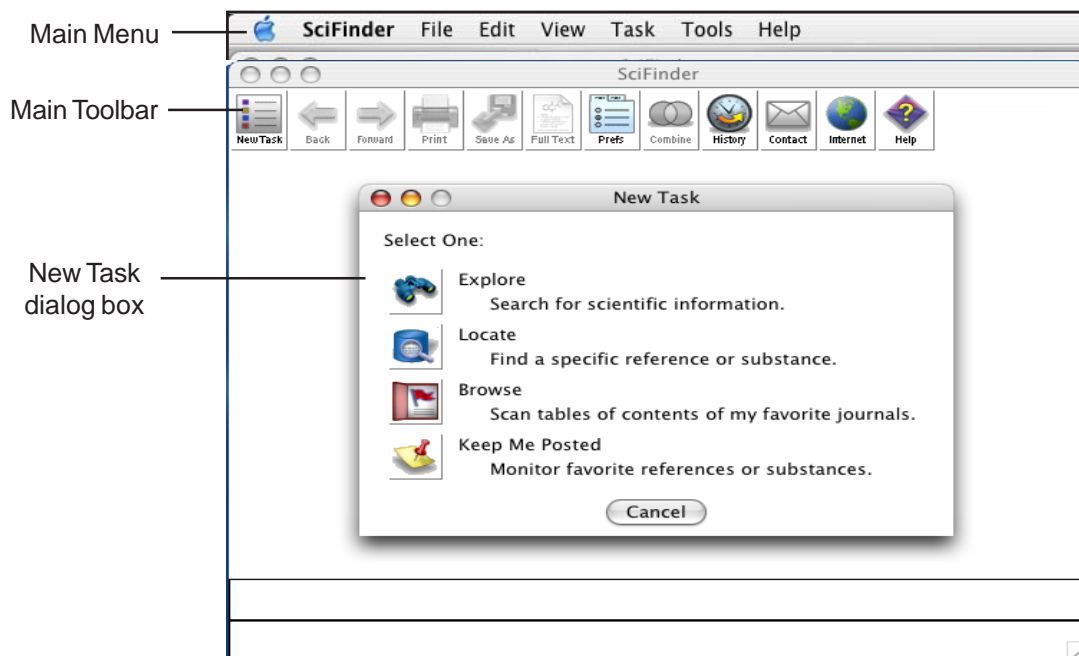


4. (First login only) Select the feature arrangement that fits your needs.



Your selection determines the display of items on the Main Toolbar and Explore dialog box. Click the blue "i" icon for details.

When you are connected to CAS, the main SciFinder window displays. It contains the Main Menu, Main Toolbar, and New Task dialog box.



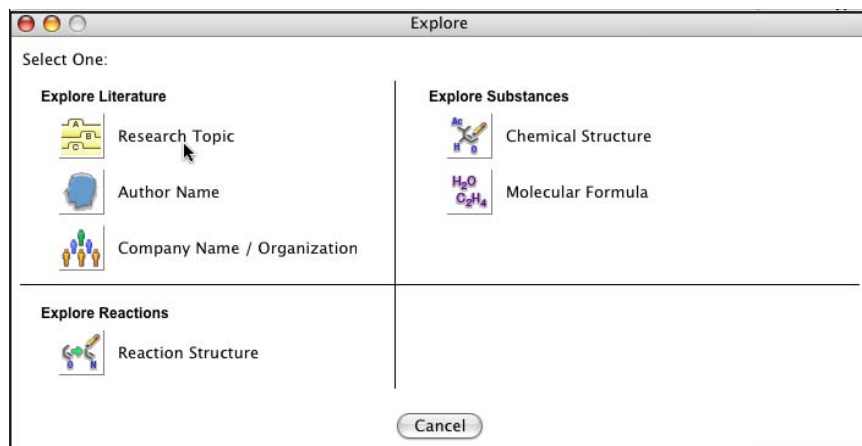
The buttons that display on the Main Toolbar depend on the feature arrangement (Traditional or Chemistry) that you selected. The Traditional arrangement is shown here.

5. Click one of the four options from the New Task dialog box: **Explore**, **Locate**, **Browse**, or **Keep Me Posted**.

## Explore

Explore allows you to look for scientific information in the CAS databases as well as in the MEDLINE database.

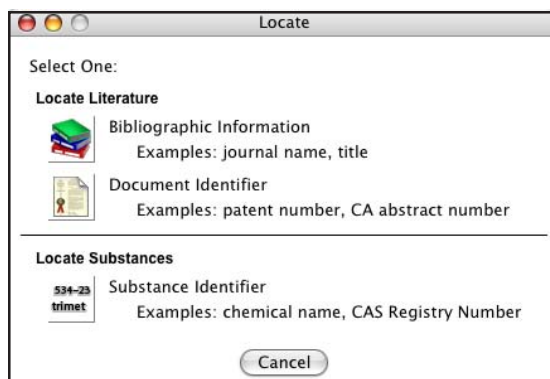
The display of the Explore options varies depending on the feature arrangement (Traditional or Chemistry) that you selected. The Traditional arrangement is shown here.



Click the icon for the task you want to perform. SciFinder prompts you for the appropriate information to conduct your search. For details about the Explore features, see the SciFinder online Help.

## Locate

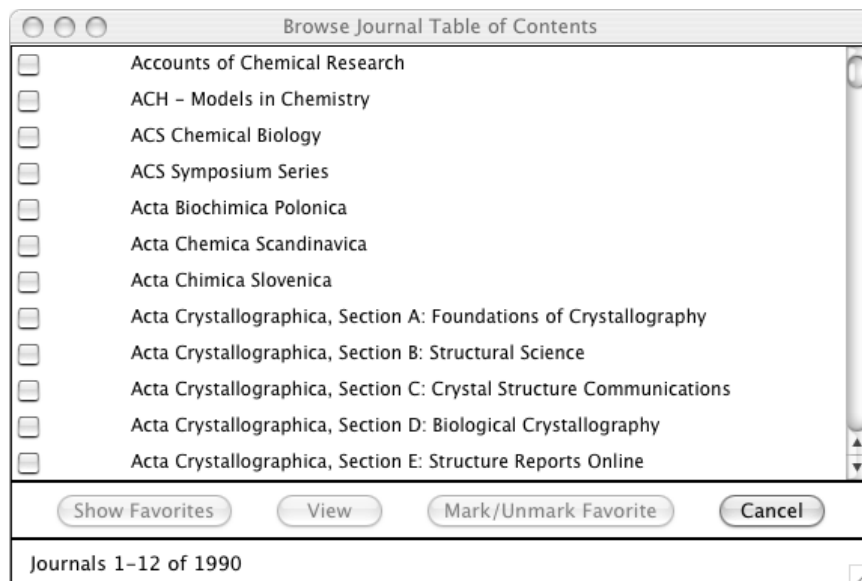
Locate allows you to quickly find a specific reference based on one or more pieces of bibliographic information or a document identifier. It also lets you search for specific substances by using a name or CAS Registry Number.



Click the icon for the task you want to perform. SciFinder prompts you for the appropriate information to conduct your search. For details about the Locate features, see the SciFinder online Help.

## Browse

Browse allows you to scan a list of nearly 2,000 key scientific journals covered by the CAS databases. You can view the tables of contents and access full-text options for selected journals.



To view a table of contents, select a journal. Then click **View**. You may also create a list of favorite journals. Select one or more journals and click **Mark/Unmark Favorite**. A flag is placed next to the journal title.

For more details about the Browse feature, see the SciFinder online Help.

## Keep Me Posted

Keep Me Posted is a current-awareness tool that enables you to retrieve the latest information on your research interests.

Keep Me Posted Now profiles may be created on the basis of the following Explore tasks:

- Chemical Structure
- Research Topic
- Author Name
- Document Identifier
- Company Name/Organization

These profiles may include citation searches and Analyze or Refine steps.



Simply click the **Keep Me Posted Now** icon in the bottom right corner of the SciFinder window.

Alternatively, profiles based on keywords, authors, CAS Registry Numbers, and chemical structures, or a combination of these, may be created manually.



SciFinder guides you through creating new current-awareness profiles, editing existing profiles, and viewing results.

Results may be received daily, weekly, or monthly. You may choose to be alerted by e-mail when profiles are run.

For details about Keep Me Posted, see the SciFinder online Help.

---

## SciFinder Help and Resources

### SciFinder Online Help

Comprehensive Help files that include search tips, troubleshooting information, and links to “how to” examples are provided within SciFinder.

To access the Help files, click the **Help** button located on the Main Toolbar. Or, select **SciFinder Help** from the **SciFinder Help** menu.

### SciFinder Web Sites

For more information about SciFinder, visit [www.cas.org](http://www.cas.org). SciFinder resources provide easy-to-follow examples and tips to help make your exploration with SciFinder more productive.

To quickly access SciFinder resources, click the **Internet** button on the Main Toolbar or select an Internet option from the **Tools** menu. Select the resource of interest, and click **OK**.

### CAS Customer Service

If you have questions, need technical assistance, or have suggestions concerning SciFinder, please use the e-mail feature within SciFinder. Click the **Message** button from the Main Toolbar or select **File > Send Message to CAS**.

For assistance by telephone, Monday – Friday, 8:00 AM – 8:00 PM U.S. Eastern time, contact CAS at:

☎ 800-753-4227 (toll-free in North America)  
☎ 614-447-3700 (worldwide)

In Europe, the following countries have toll-free, direct access to CAS, Monday – Friday, 6:00 AM – 8:00 PM U.S. Eastern time:

☎ 0800-7-1238 (from Belgium)  
☎ 0800-90-3061 (from France)  
☎ 0800-181-9365 (from Germany)  
☎ 0800-89-6083 (from Switzerland)  
☎ 0800-89-1590 (from UK)

