



Chemical Abstracts Service  
provides access to  
STN in North America

January/February 2006

# STN News

CODEN: STNWEQ ISSN: 1040-1229 Vol. 22 No. 1

North American Edition

## STN<sup>®</sup>

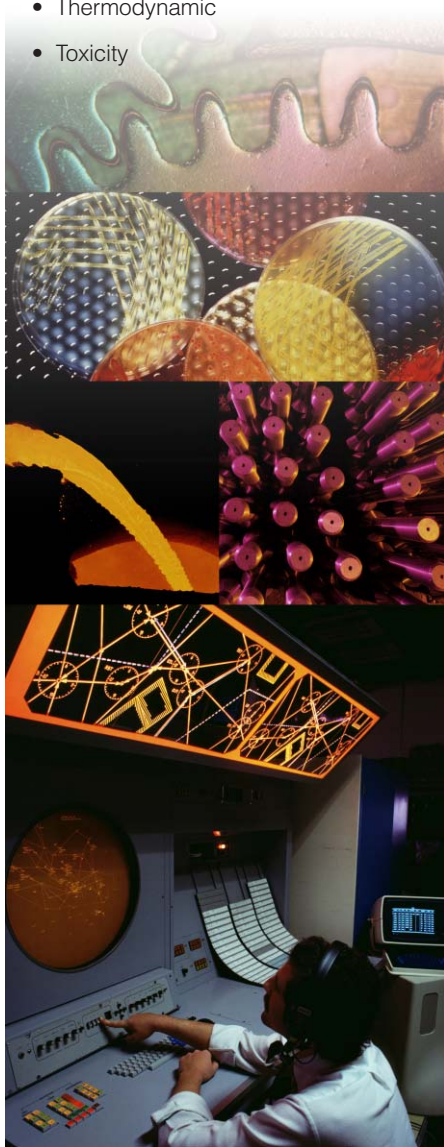
### Highlights

- 2 Exploring property information using STN<sup>®</sup>**
- 9 Searching and displaying experimental spectral data in REGISTRY**
- 12 Manual current-awareness searching on STN**
- 14 Variable group analysis enhanced in STN Express<sup>®</sup> with *Discover!*<sup>™</sup>, Version 8.01**
- 16 Verifying IPC codes with the IPC thesaurus in CA<sup>SM</sup>/CAplus<sup>SM</sup> and USPATFULL/USPAT2**
- 18 STN<sup>®</sup> on the Web<sup>SM</sup> now offers new Windows<sup>®</sup> structure plug-in**

## Exploring property information using STN

STN provides a wealth of property data in many of its databases. All types of properties are represented, such as:

- Chemical
- Electrical
- Magnetic
- Mechanical
- Optical
- Physical
- Spectral
- Thermodynamic
- Toxicity



### Databases on STN that contain property data

This chart provides an overview of the content in the main property data-containing databases on STN, as well as the specific types of property data available.

Database	Content coverage	Types of property data
BEILSTEIN	Structure and factual information for organic substances	Electrical, magnetic, mechanical, optical, physical, and thermodynamic properties
CAS Registry <sup>SM</sup> File	Records of substances identified by the Chemical Abstracts Service (CAS) Registry System	Experimental and predicted (calculated) property data, spectra data, and tags pointing to references containing experimental property data
CHEMSAFE (Chemical Safety Information)	Evaluated safety characteristics of flammable substances and their mixtures	More than 40 chemical, physical, and safety properties, including flash points, explosion limits, minimum ignition energy, and auto-ignition temperature for gases, liquids, dusts, and hybrid mixtures
DETERM	Thermophysical data important for the design of various processes in the chemical industry	More than 500 properties for pure compounds, as well as for mixtures of defined composition, including electric, electrochemical, multicomponent system, surface, thermodynamic, and transport properties
GMELIN	Structure and factual database on inorganic and organometallic chemistry	Electrical, magnetic, mechanical, molecular, optical, spectral, and thermodynamic properties
HSDB (Hazardous Substances Data Bank)	Toxicology and the environmental effects of chemicals	Chemical and physical properties
ICSD (Inorganic Crystal Structure Database)	Structure and factual information for inorganic compounds	N/A
MDF (Metals Datafile)	Metal property data	Mechanical properties including impact energy, hardness, and strength values, as well as physical properties such as electrical resistivity, melting points, and thermal conductivity
MRCK (Merck Index Online <sup>SM</sup> )	Descriptions of important chemicals, drugs, biologicals, and agricultural and natural products	Numeric data for physical and toxicity properties
SPECINFO	Spectral data for a representative section of organic chemistry, including organometallic substances	NMR, IR, and/or mass spectra

With so many properties in STN databases, you might wonder:

- Is there an easy and cost-effective way to determine which STN databases contain the property information you need?
- How can I quickly find a particular property value for a substance?

To answer these types of questions, take advantage of the following STN commands and features:

- NUMERIC database cluster of databases containing numerically searchable property values
- INDEX command to find the databases that cover your search topic
- Field Availability (/FA) search field that contains available fields in each database
- Standardization of search fields and terminology, making it possible to search the same property across databases

## Find melting point data for Nylon 6.

```
=> INDEX NUMERIC
17 FILES IN THE FILE LIST IN STNINDEX

=> S NYLON 6/CN AND MELTING POINT/FA
      0* FILE DETHERM
      0* FILE MDF
      1 FILE MRCK
      1 FILE REGISTRY
      1 FILE ZREGISTRY
3 FILES HAVE ONE OR MORE ANSWERS, 17 FILES SEARCHED IN
STNINDEX
L1 QUE NYLON 6/CN AND MELTING POINT/FA

=> FILE MRCK REGISTRY; S L1
L2 1 FILE MRCK
L3 1 FILE REGISTRY
TOTAL FOR ALL FILES
L4 2 L1

=> D HIT L4 1-2

L4 ANSWER 1 OF 2 MRCK COPYRIGHT (C) 2006 Merck and
Co., Inc., Whitehouse Station, New Jersey, USA. All
rights reserved. on STN
MERCK Index Name (MIN): Nylon 6

Melting Point (MP):

Value
MP
deg C
=====
223

L4 ANSWER 2 OF 2 REGISTRY COPYRIGHT 2006 ACS on STN
OTHER NAMES:
CN Nylon 6

CODE| VALUE | TYPE | NOTE
====+====+====+====
MP |270 deg C |Experimental| (1) CAS
| (approx) | |
MP |226 deg C |Experimental| (2) CAS
MP |225 deg C |Experimental| (2) CAS
MP |225 deg C |Experimental| (3) CAS
MP |224 deg C |Experimental| (2) CAS
:
:
MP |216-217 deg C|Experimental| (5) CAS
MP |215 deg C |Experimental| (5) CAS
(1) Haferkamp, H.; Journal of Laser Applications 2004
V16(4) P198-205 CAPLUS
(2) Pesetskii, S. S.; European Polymer Journal 2005 V41(6)
P1380-1390 CAPLUS
(3) Noda, Natsuko; Polymer 2005 V46(18) P7201-7217 CAPLUS
:
:
(16) Dinzhos, R. V.; Journal of Macromolecular Science,
Part B: Physics 2005 V44(4) P421-430 CAPLUS
(17) Privalko, V. P.; Journal of Macromolecular Science,
Part B: Physics 2005 V44(4) P431-443 CAPLUS
```

Use INDEX to enter the NUMERIC database cluster.

Enter your search query.

Three of the databases have answers to your question. A query L-number is created.

Enter the databases and search the query.

Display HIT information from each answer in L4.

**Database clusters allow you to search multiple databases at one time with the same query. For property information, the NUMERIC database cluster is the best place to start.**

## NUMERIC database cluster

Database clusters allow you to search multiple databases at one time with the same query. For property information, the NUMERIC database cluster is the best place to start.

For a complete list of database clusters, and the databases contained in each, enter HELP CLUSTER at any arrow prompt during an STN session or visit:

[www.cas.org/ONLINE/CATALOG/CLUSTERS/cover.html](http://www.cas.org/ONLINE/CATALOG/CLUSTERS/cover.html)

### Experimental Property Tags (ETAG)

```
PROPERTY | NOTE
-----+-----
Melting Point| (1) CAS
Melting Point| (2) CAS
Melting Point| (3) CAS
Melting Point| (4) CAS
Melting Point| (5) CAS
Melting Point| (6) CAS
Melting Point| (7) CAS
Melting Point| (8) CAS
Melting Point| (9) CAS
Melting Point| (10) CAS
```

- ```
(1) Li, Hua-ming; Gongneng Gaofenzi Xuebao 2002 V15(3)
    P255-260 CAPLUS
(2) Mizerovskii, L. N.; Fibre Chemistry 2004 V36(6) P402-
    407 CAPLUS
(3) Rusu, Gheorghe; Materiale Plastice (Bucharest, Romania)
    2004 V41(1) P20-25 CAPLUS
    :
    :
(9) Medellin-Rodriguez, F. J.; Macromolecules 2004 V37(5)
    P1799-1809 CAPLUS
(10) Miyamoto, Masaaki; JP 2003320528 A2 2003 CAPLUS
```

See HELP PROPERTIES for information about property data sources in REGISTRY.

## Additional resources

For more details on searching properties in databases on STN, refer to:

| Title or content                                    | URL                                                                                                                                                                                                                                                                                                                |
|-----------------------------------------------------|--------------------------------------------------------------------------------------------------------------------------------------------------------------------------------------------------------------------------------------------------------------------------------------------------------------------|
| Searching Properties in the CAS Registry File       | <a href="http://www.cas.org/ONLINE/UG/regprops.html">www.cas.org/ONLINE/UG/regprops.html</a>                                                                                                                                                                                                                       |
| The New BEILSTEIN File on STN – Physical Properties | <a href="http://www.cas.org/ONLINE/STN/STNOTES/stnotes32.pdf">www.cas.org/ONLINE/STN/STNOTES/stnotes32.pdf</a>                                                                                                                                                                                                     |
| BEILSTEIN Documentation                             | <a href="http://www.stn-international.de/training_center/chemistry/beilstein/all_beilstein.pdf">www.stn-international.de/training_center/chemistry/beilstein/all_beilstein.pdf</a>                                                                                                                                 |
| BEILSTEIN Workshop manual                           | <a href="http://www.stn-international.de/training_center/chemistry/beilstein/Beilstein_wsm2005.pdf">www.stn-international.de/training_center/chemistry/beilstein/Beilstein_wsm2005.pdf</a>                                                                                                                         |
| STN Numeric Database Cluster                        | <a href="http://www.stn-international.de/training_center/engineering/numeric_database_cluster.pdf">www.stn-international.de/training_center/engineering/numeric_database_cluster.pdf</a><br><a href="http://www.cas.org/ONLINE/CATALOG/CLUSTERS/numeric.html">www.cas.org/ONLINE/CATALOG/CLUSTERS/numeric.html</a> |
| Using INDEX on STN Quick Reference Card             | <a href="http://www.cas.org/ONLINE/QR/index.pdf">www.cas.org/ONLINE/QR/index.pdf</a>                                                                                                                                                                                                                               |

## BEILSTEIN

**–updated with more than 64,000 new compounds**

Effective January 17, 2006, more than 64,000 new compounds and recent supplementary data for approximately 40,300 compounds were added to BEILSTEIN. Currently, BEILSTEIN contains more than 9,428,000 organic compounds and over 8,187,000 substances with information on reactions.

The BEILSTEIN Database Summary Sheet is available at:  
[www.cas.org/ONLINE/DBSS/beilsteinss.html](http://www.cas.org/ONLINE/DBSS/beilsteinss.html)

## CA/CAplus

**–enhanced with updated IPC codes; company name thesaurus reloaded**

Beginning in January 2006, IPC 8 codes were added to many of the new patent records in the CA/CAplus family of databases to reflect the IPC Reform initiated by the World Intellectual Property Organization (WIPO).

In December 2005, the European Patent Office (EPO) began reclassifying over 50 million previously issued patents to align them with the new IPC codes. Implementation of the reclassifications in CA/CAplus is underway.

In addition, IPC codes for many patent family members were added to CA/CAplus on December 18, 2005.

To find the most current IPC Reform information regarding STN patent databases, visit:  
[www.cas.org/EO/ipcreform.html](http://www.cas.org/EO/ipcreform.html)

The Company Name Thesaurus in CA/CAplus was reloaded on December 31, 2005. Enhancements include over 2,300 additional active company name families and over 8,500 additional company names.

The revised CA/CAplus Database Summary Sheets are available at:  
[www.cas.org/ONLINE/DBSS/cass.html](http://www.cas.org/ONLINE/DBSS/cass.html)  
[www.cas.org/ONLINE/DBSS/caplusss.html](http://www.cas.org/ONLINE/DBSS/caplusss.html)

## EMBASE/EMBAL

**–new E-ISSN and Article Number data added**

New data for the Electronic ISSN (E-ISSN) and Article Number (ARN) were added to the Source (/SO) field. E-ISSN data are also being added to the International Standard (/ISN) field for search and display.

E-ISSN and ARN are searchable in the /SO field in EMBASE only.

The EMBASE/EMBAL Database Summary Sheets are available at:  
[www.cas.org/ONLINE/DBSS/embasess.html](http://www.cas.org/ONLINE/DBSS/embasess.html)  
[www.cas.org/ONLINE/DBSS/embalss.html](http://www.cas.org/ONLINE/DBSS/embalss.html)

## ENCOMPLIT/ENCOMPLIT2

**–copyright line updated; new E-ISSN and Article Number data added**

The copyright information for ENCOMPLIT/ENCOMPLIT2 has been updated. It now reads "Copyright © 2006 Elsevier Inc. All rights reserved."

New data for the Electronic ISSN (E-ISSN) and Article Number (ARN) were added to the Source (/SO) field. E-ISSN data are also being added to the International Standard (/ISN) field for search and display.

The ENCOMPLIT/ENCOMPLIT2 Database Summary Sheets are available at:  
[www.cas.org/ONLINE/DBSS/encomplitss.html](http://www.cas.org/ONLINE/DBSS/encomplitss.html)  
[www.cas.org/ONLINE/DBSS/encomplit2ss.html](http://www.cas.org/ONLINE/DBSS/encomplit2ss.html)

## ENCOMPAT/ENCOMPAT2

**–copyright line updated**

The copyright information for ENCOMPAT/ENCOMPAT2 has been updated. It now reads "Copyright © 2006 Elsevier Inc. All rights reserved."

The ENCOMPAT/ENCOMPAT2 Database Summary Sheets are available at:  
[www.cas.org/ONLINE/DBSS/encompattss.html](http://www.cas.org/ONLINE/DBSS/encompattss.html)  
[www.cas.org/ONLINE/DBSS/encompatt2ss.html](http://www.cas.org/ONLINE/DBSS/encompatt2ss.html)

## IFIPAT/IFIUDB/IFICDB

**–IPC 8 searching**

Because International Patent Classification Version 8 (IPC 8) codes have begun appearing in the IFIPAT/IFIUDB/IFICDB, keep the following in mind while searching:

- IPC 8 codes are being placed in the existing ICM and ICS fields. To search for IPC 8 codes, use the field labels /ICM, /ICS, /IC (searches /ICM and /ICS simultaneously), or /IPC (also searches /ICM and /ICS simultaneously, but works across STN files so is best for multifile searching). Since IPC Reform has eliminated the concepts of Main and Secondary IPC codes, it is advisable to search IPC 8 codes in the /IPC or /IC field.
- IPC codes can usually be searched using the pre- or post-Reform format:

```
=> S C08G018-00/ipc
      1464 C08G018-00/IC
      1038 C08G018-00/ICM
      426 C08G018-00/ICS
L1    1464 C08G018-00/IPC
      (C08G018-00/IC, ICM, ICS)

=> S C08G0018-00/ipc
      1464 C08G018-00/IC
      1038 C08G018-00/ICM
      426 C08G018-00/ICS
L2    1464 C08G0018-00/IPC
      (C08G018-00/IC, ICM, ICS)
```

# Database News

Post-Reform format IPC codes have an extra character compared to pre-Reform codes. For example, in the IPC 8 Code C08G0018-00, the extra character is the zero appearing in the fifth position. If the fifth character in an IPC 8 code were any number other than zero, you would need to search that IPC 8 code exactly as given in the IPC 8 manual of classification.

- The new SET command, SET ICFORMAT, allows you to determine whether the IPC codes in your documents are SELECTed and DISPLAYed in pre-Reform or post-Reform format. The default is pre-Reform format.

IPC codes will display in the pre-Reform format if you have SET ICFORMAT OFF and in post-Reform format if you have SET ICFORMAT ON.

You can continue to SELECT IPC codes and use them for file crossovers, e.g., to CAplus<sup>SM</sup> and USPATFULL.

- If you are running current-awareness alerts (SDIs) or have saved search strategies containing IPC codes, you should review your strategies to ensure continued comprehensive retrieval:
  - Replace /ICM or /ICS in your strategies with /IPC or /IC
  - Check the IPC 8 Manual of Classification to ensure that the IPC codes you are using are still valid (visit [www.wipo.int/classifications/ipc/ipc8/](http://www.wipo.int/classifications/ipc/ipc8/))

Your Service Center's Help Desk can help you with further questions about IPC code searching in the IFI databases.

For more information on the IPC Reform, visit:  
[www.cas.org/EO/ipcreform.html](http://www.cas.org/EO/ipcreform.html)  
[www.stn-international.de/stndatabases/details/ipc\\_reform.html](http://www.stn-international.de/stndatabases/details/ipc_reform.html)

The IFIPAT/IFIUDB/IFICDB Database Summary Sheets are available at:

[www.cas.org/ONLINE/DBSS/ifipatss.html](http://www.cas.org/ONLINE/DBSS/ifipatss.html)  
[www.cas.org/ONLINE/DBSS/ifiudbss.html](http://www.cas.org/ONLINE/DBSS/ifiudbss.html)  
[www.cas.org/ONLINE/DBSS/ificdbss.html](http://www.cas.org/ONLINE/DBSS/ificdbss.html)

## INPADOC

**–revised workshop manual available; new IPC 8 search, display, and select enhancements**

The INPADOC workshop manual has been updated and now includes all the 2004 and 2005 improvements to INPADOC, including new displays and the enhanced patent family and legal status alert options.

The revised manual is available at:  
[www.stn-international.de/training\\_center/patents/inpadoc\\_wm.pdf](http://www.stn-international.de/training_center/patents/inpadoc_wm.pdf)

The first records with new International Patent Classification Version 8 (IPC 8) codes have been added to INPADOC. The following enhancements are now available.

## SEARCH enhancements

- The /IPC search field has been redefined from a supersearch field to a field with its own index. The /IPC field now includes all IPC codes.
- Additional search fields have been added:

|          |                                                                                    |
|----------|------------------------------------------------------------------------------------|
| /IPC.KW  | Keyword terms for the IPCs in the /IPC field                                       |
| /IPC.ACD | Action Date for the IPCs in the /IPC field                                         |
| /IPC.VER | Date, partial date, or edition number of the version of the IPCs in the /IPC field |

Several types of new IPC code metadata were introduced with IPC 8. Use (S) proximity to refine your IPC code searches, e.g., search for an invention IPC code:

=> **S C12N0009-02/IPC(S) I/IPC.KW**

## DISPLAY enhancements

- A new display format, IPC.TAB, includes IPC.KW, IPC.ACD, and IPC.VER information.
- IPCI is a new Initial IPC display format.
- IPCR is the new Reclassified IPC display format.
- Information in the brackets refers to additional data such as:
  - Invention (I)
  - Non-Invention (N)
  - Advanced (A)
  - Core (C)
  - CORE\* (C\*) (rolled-up of advanced IPC codes to the corresponding core IPC code)
- A new SET command, SET ICFORMAT ON, can be used for DISPLAY and SELECT. This command automatically changes the pre-IPC 8 data to the IPC 8 format.

## SELECT enhancements

- The following new SELECT fields have been added:

|        |                                                                                  |
|--------|----------------------------------------------------------------------------------|
| IPC.A  | Advanced level IPC codes                                                         |
| IPC.AI | Advanced level IPC codes for invention                                           |
| IPC.C  | Core level IPC codes                                                             |
| IPC.CI | Core level IPC codes for invention                                               |
| IPC.F  | Pre-IPC 8 codes from the /ICM field and all first IPC 8 values from 2006 forward |

For more information on the IPC Reform, visit:  
[www.cas.org/EO/ipcreform.html](http://www.cas.org/EO/ipcreform.html)  
[www.stn-international.de/stndatabases/details/ipc\\_reform.html](http://www.stn-international.de/stndatabases/details/ipc_reform.html)

The INPADOC Database Summary Sheet is available at:  
[www.cas.org/ONLINE/DBSS/inpadocss.html](http://www.cas.org/ONLINE/DBSS/inpadocss.html)

# Database News

## MARPAT®

**–enhanced with pre-1988 Markush structures in INPI data**

Approximately 48,000 Markush structures derived from Institute National de la Propriete Industrielle (INPI) data have been added to MARPAT from the pre-1988 time period. Additional records back to the early 1960s will continue to be added during 2006.

The MARPAT Database Summary Sheet is available at:  
[www.cas.org/ONLINE/DBSS/marpatss.html](http://www.cas.org/ONLINE/DBSS/marpatss.html)

## MARPATprev<sup>SM</sup>

**–database removed from STN; content included in MARPAT**

MARPATprev has been removed from STN. The database is no longer necessary due to faster and more efficient completion of patent records for MARPAT.

## MEDLINE®/LMEDLINE

**–2006 MeSH terms available**

The 2006 MeSH terms are available in MEDLINE/LMEDLINE.

The MEDLINE/LMEDLINE Database Summary Sheets are available at:  
[www.cas.org/ONLINE/DBSS/medliness.html](http://www.cas.org/ONLINE/DBSS/medliness.html)  
[www.cas.org/ONLINE/DBSS/lmedliness.html](http://www.cas.org/ONLINE/DBSS/lmedliness.html)

## PAPERCHEM2

**–copyright line updated; new E-ISSN and Article Number data added; pre- and post-Reform IPC code searching enhanced**

The copyright information for PAPERCHEM2 has been updated. It now reads "Copyright © 2006 Elsevier Inc. All rights reserved."

New data for the Electronic ISSN (E-ISSN) and Article Number (ARN) were added to the Source (/SO) field. E-ISSN data are also being added to the International Standard (/ISN) field for search and display.

IPC codes can now be searched in PAPERCHEM2 in both pre- and post-Reform format.

The PAPERCHEM2 Database Summary Sheet is available at:  
[www.cas.org/ONLINE/DBSS/paperchem2ss.html](http://www.cas.org/ONLINE/DBSS/paperchem2ss.html)

## TOXCENTER

**–2006 MeSH headings and tree number terms available for the MEDLINE file segment**

Effective December 11, 2005, all new records and updated records for the MEDLINE file segment of TOXCENTER contain 2006 MeSH headings and tree number terms.

More information is available at:

[www.nlm.nih.gov/mesh/](http://www.nlm.nih.gov/mesh/)  
[www.nlm.nih.gov/pubs/techbull/nd05/nd05\\_2006\\_MeSH.html](http://www.nlm.nih.gov/pubs/techbull/nd05/nd05_2006_MeSH.html)  
[www.nlm.nih.gov/pubs/techbull/nd05/nd05\\_med\\_data\\_changes.html](http://www.nlm.nih.gov/pubs/techbull/nd05/nd05_med_data_changes.html)

The TOXCENTER Database Summary Sheet is available at:  
[www.cas.org/ONLINE/DBSS/toxcenterss.html](http://www.cas.org/ONLINE/DBSS/toxcenterss.html)

## TULSA

**–new monthly current-awareness alert (SDI) frequency added**

A new monthly current-awareness alert (SDI) frequency is now available in TULSA. Current-awareness alerts are now available both weekly (default) and monthly.

For pricing details, see HELP COST in the database.

The revised TULSA Database Summary Sheet is available at:  
[www.cas.org/ONLINE/DBSS/tulsass.html](http://www.cas.org/ONLINE/DBSS/tulsass.html)

## USPATFULL/USPAT2

**–enhanced with updated IPC codes**

Beginning in January 2006, IPC 8 codes were added to many of the patent records in USPATFULL/USPAT2 to reflect the IPC Reform initiated by the World Intellectual Property Organization (WIPO).

In December 2005, the European Patent Office (EPO) reclassified over 50 million previously issued patents to align them with the new IPC codes. The reclassifications appropriate to USPATFULL have been added to this database.

Find the most current IPC Reform information regarding STN patent databases at:  
[www.cas.org/EO/ipcreform.html](http://www.cas.org/EO/ipcreform.html)

The revised USPATFULL/USPAT2 Database Summary Sheets are available at:  
[www.cas.org/ONLINE/DBSS/uspattfullss.html](http://www.cas.org/ONLINE/DBSS/uspattfullss.html)  
[www.cas.org/ONLINE/DBSS/uspatt2ss.html](http://www.cas.org/ONLINE/DBSS/uspatt2ss.html)

## WPIDS/WPINDEX/WPIX/WPIFV

**Derwent World Patents Index®**

**–Austrian patent law changes; new manual codes now available; IPC 8 code availability**

On July 1, 2005, the Austrian patent law changed. All open patent applications are now published 18 months after the filing date. Previously, these were only available upon request from the Austrian Patent Office.

In addition, the Austrian Patent Office has adopted a post-grant opposition system in which the opposition period expires 2 months after the date of the grant.

# Database News

For more information and details of resulting changes to the Derwent World Patents Index, visit:

[scientific.thomson.com/support/patents/coverage/latestupdates/austrianpatentlaw/](http://scientific.thomson.com/support/patents/coverage/latestupdates/austrianpatentlaw/)

Manual codes are the hierarchical classification and indexing system used as an online retrieval tool for patents included in the Derwent World Patents Index.

By working with customers, Thomson Scientific revises these codes annually to ensure they mirror technological developments and thus enable precise technology searches. The latest revision is now complete, and the codes are available in the Derwent WPI family of databases.

View the details at:  
[tinyurl.com/42r8m](http://tinyurl.com/42r8m)

IPC 8 codes, introduced in January 2006, first appeared in WPIDS/WPINDEX/WPIX and WPIFV.

Until the enhanced versions of WPIDS/WPINDEX/WPIX become available later in first quarter 2006, the IPC 8 codes will be treated in the following manner:

## IPC format

The IPC 8 Main Groups, which contain four digits, will be shortened to three digits (i.e., IPC 7 format) by removing the leading zero.

Example: A03K0111-01 becomes A03K111-01

If the Main Group is four digits long and the leading digit is not zero, this will be evaluated by Thomson Scientific analysts and handled on an individual basis.

## IPC 8 attributes

IPC 7 codes are indexed as Main, Secondary, Index, or Additional IPCs. They are indexed online in the /ICM, /ICS, /ICI, and /ICA fields, respectively, and also in the IPC super-index to allow simultaneous searching of all IPC code fields. IPC 8 codes are no longer supplied in this way, but there is other "metadata" information associated with the codes, e.g., indicating whether they are invention or non-invention based.

Until the enhanced version of WPIDS/WPINDEX/WPIX becomes available, the IPC 8 attributes will not be present in these databases. The IPC 8 codes will be mapped to the nearest equivalent IPC 7 classification as follows and will also be included in the IPC super-index:

| IPC 7 class | IPC 8 attribute                                     |
|-------------|-----------------------------------------------------|
| Main        | First invention information                         |
| Secondary   | Later invention information                         |
| Additional  | Non-invention information or additional information |

You should review your search strategies that contain IPC 7 codes and determine whether those codes are still valid in IPC 8. You may need to edit your saved search strategies and current-awareness alert (SDI) profiles to ensure continued comprehensive retrieval.

## Enhanced and reloaded versions of WPIDS/WPINDEX/WPIX

Once the enhanced and reloaded versions of WPIDS/WPINDEX/WPIX are available later in the first quarter of 2006, IPC 8 will be available in full with all appropriate attributes included.

The WPIDS/WPINDEX/WPIX/WPIFV Database Summary Sheets are available at:

[www.cas.org/ONLINE/DBSS/wpidsss.html](http://www.cas.org/ONLINE/DBSS/wpidsss.html)

[www.cas.org/ONLINE/DBSS/wpindexss.html](http://www.cas.org/ONLINE/DBSS/wpindexss.html)

[www.cas.org/ONLINE/DBSS/wpixss.html](http://www.cas.org/ONLINE/DBSS/wpixss.html)

[www.cas.org/ONLINE/DBSS/wpifvss.html](http://www.cas.org/ONLINE/DBSS/wpifvss.html)

## Searching and displaying experimental spectral data in REGISTRY



**Q. What type of spectral data can I search and display in REGISTRY?**

**A. You can search and display IR and C-13 NMR spectra.**

Two sets of experimental spectral property data have recently been added to REGISTRY/ZREGISTRY:

- Over 114,000 C-13 NMR spectra for over 80,000 substances from Wiley Subscription Services Inc. (WSS)
- Approximately 28,000 IR absorption spectra from the "Integrated Spectral Data Base System of Organic Compounds" for 116,000 substances provided by the National Institute of Advanced Industrial Science and Technology in Japan (NIAIST)

With this enhancement, a new search field, Spectra (/SPEC), was added. The content is searchable as bound phrases, e.g., IR SPECTRA or single words; IR or NMR with implied (S) proximity between words.

**Find IR and NMR spectra for adamantane compounds.**

=> **FILE REGISTRY**

=> **S ADAMANT? AND IR/SPEC AND NMR/SPEC**

9052 ADAMANT?

16351 IR/SPEC

80227 NMR/SPEC

L1 21 ADAMANT? AND IR/SPEC AND NMR/SPEC

=> **D HIT 1**

L1 ANSWER 1 OF 21 REGISTRY COPYRIGHT 2006 ACS on STN

OTHER CA INDEX NAMES:

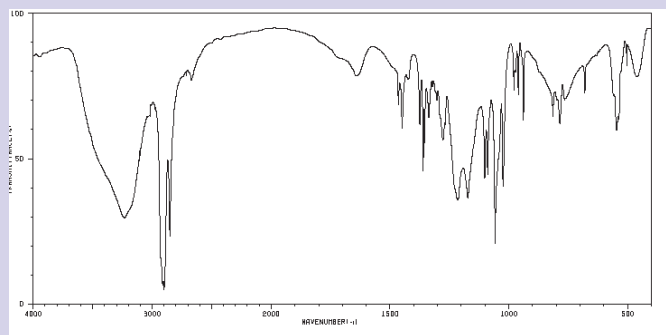
CN **2-Adamantanol, methanesulfonate (8CI)**

OTHER NAMES:

CN **2-Adamantyl mesylate**

CN **2-Adamantyl methanesulfonate**

IR Absorption Spectra

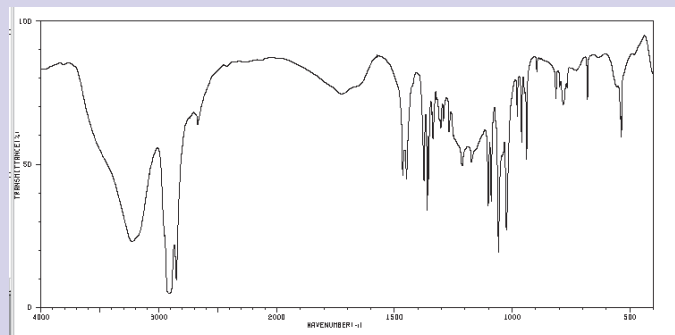


Spectrum ID: NIDA66994

Spectrometer: Nicolet 170SX or JASCO FT/IR-410

Source: "Integrated Spectral Data Base System of Organic Compounds" data are provided by the National Institute of Advanced Industrial Science and Technology (Japan)

COPYRIGHT 2006 ACS on STN



Spectrum ID: NIDA66971

Spectrometer: Nicolet 170SX or JASCO FT/IR-410

Source: "Integrated Spectral Data Base System of Organic Compounds" data are provided by the National Institute of Advanced Industrial Science and Technology (Japan)

COPYRIGHT 2006 ACS on STN

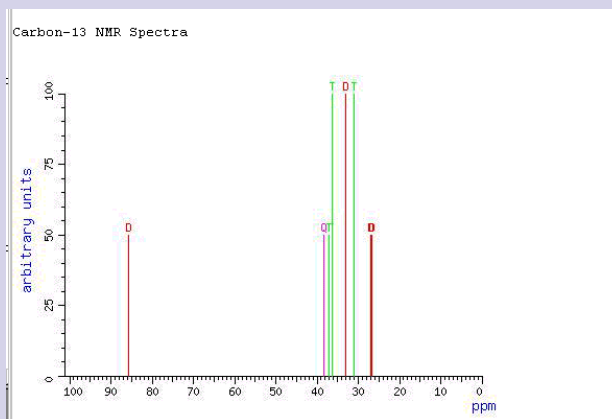
You can display spectral images using individual display fields or formats.

| Display format | Content                                                      |
|----------------|--------------------------------------------------------------|
| SPEC           | Displays <i>all</i> of the spectra listed in the EPROP table |
| SPEC.C13NMR    | Displays only the Carbon-13 NMR spectra                      |
| SPEC.IR        | Displays only the IR absorption spectra                      |

Display formats that include the SPEC display are ALL, IALL, MAX, and PROP. Spectral images are also included in the QRD (Query Related Display) and HIT formats when spectral data are searched.

However, note that spectral images in the SPEC display format are displayed only when you use STN on the Web or STN Express with *Discover!*, Version 5.0 or higher.

Carbon-13 NMR Spectra



Spectrum ID: CNCC-83139-625K  
Solvent: chloroform-d (865-49-6)  
Standard: tetramethylsilane  
Spectrometer: BRUKER WH-90  
Source: Spectral data are provided by Wiley Subscription Services, Inc. (US)

COPYRIGHT 2006 ACS on STN

**Use ALL, IALL, MAX, and PROP formats to display spectral data.**

You may also display spectral images by using the **Spectrum** link in the EPROPS table. When more than one spectrum from a single supplier is available for a single substance, all of the spectra available for that substance are displayed.

Note that linking to spectral images from the EPROPS table is available only in STN on the Web and STN Express with *Discover!*, Version 8.01.

## Additional resources

For more information on property searching in REGISTRY, visit:  
[www.cas.org/ONLINE/UG/regprops.html](http://www.cas.org/ONLINE/UG/regprops.html)



## View the Carbon-13 NMR spectrum using the link in the EPROPS table.

=> **D EPROP**

Experimental Properties (EPROP)

| PROPERTY (CODE)                                       | VALUE  | NOTE |
|-------------------------------------------------------|--------|------|
| Carbon-13 NMR Spectra  <a href="#">Spectrum</a>   (1) | WSS    |      |
| IR Absorption Spectra  <a href="#">Spectrum</a>   (2) | NIAIST |      |

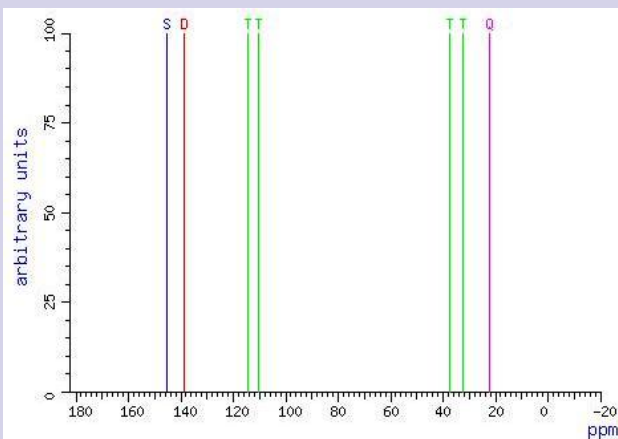
- (1) Spectral data were obtained from Wiley Subscription Services, Inc. (US)
- (2) "Integrated Spectral Data Base System of Organic Compounds" data were obtained from the National Institute of Advanced Industrial Science and Technology (Japan)

See [HELP PROPERTIES](#) for information about property data sources in REGISTRY.

=> **d acc 4049-81-4 N.W**

ANSWER 1 REGISTRY COPYRIGHT 2005 ACS on STN

Carbon-13 NMR Spectra



Spectrum ID: CNCC-15684-964U  
Temperature: 304 deg C  
Standard: tetramethylsilane  
Spectrometer: VARIAN HA-100  
Source: Spectral data are provided by Wiley Subscription Services, Inc. (US)

COPYRIGHT 2006 ACS on STN

## Manual current-awareness searching on STN

Automatic current-awareness alerts (SDIs) are available for most STN databases with one or more update frequencies, typically monthly, weekly, daily, or each update. However, at times you may wish to search a time period different than the update frequencies that are available for a particular database. This article illustrates ways to choose the appropriate date fields and run a manual current-awareness search.

For more information and to view details about database updates, enter HELP UPDATE at an arrow prompt (=>) in the database.

Use EXPAND BACK to view the list of recent updates.

```
=> E BACK 20061231/ED
**** END OF FIELD ****
E3      0 --> 20061231/ED
E4      20141 20060104/ED
E5      14310 20051228/ED
E6      16079 20051221/ED
E7      12271 20051214/ED
E8      15419 20051207/ED
E9      22699 20051201/ED
E10     19196 20051123/ED
E11     33263 20051116/ED
E12     14985 20051109/ED
```

*Choose a future date as the start of the EXPAND BACK. To verify that /ED and /UP are the same, repeat the expand using /UP and compare the numbers for each update.*

### Entry Date and Update Date fields

The various date fields used to qualify your manual alert search are all numeric fields; you may use the appropriate numeric operator for your needs.

| Numeric Operator | Description              |
|------------------|--------------------------|
| -                | Range                    |
| <                | Less than                |
| >                | Greater than             |
| <=               | Less than or equal to    |
| >=               | Greater than or equal to |

For databases that are not completely reloaded with each update, there are two or more date fields that may be chosen for a manual current-awareness search. For example, the BIOSIS® database is updated on a weekly basis. The date fields are:

- Entry Date – the date the record was added to the database
- Update Date – the date the record was last updated

New records in the database have both an Entry Date (/ED) field and an Update Date (/UP) field. In the case of BIOSIS, records are not usually updated after they enter the database, so for a manual alert search, you can use either field.

Search for updates to your strategy (L4 in this example) for November and December 2005.

```
=> S L4 AND 20051101-20051231/ED
159828 20051101-20051231/ED
(20051101-20051231/ED)
L5      1439 L4 AND 20051101-20051231/ED
```

A complex strategy may be saved as a saved query (name/Q) or an STN Express command file. For more information, refer to the “Automating your search,” STN e-Seminar held on August 31, 2004. The strategy may then be recalled each time an alert search is needed.

For databases that do update records after they enter the database, the Update Date (/UP) will retrieve both new records and records that have been changed during the specified time period. The Entry Date will only retrieve the new records. Choose either /ED or /UP depending on your desired results.

### More specific update fields

Some databases have several types of entry and update fields. To see what fields are available in a particular database, consult the Database Summary Sheet or enter HELP SFIELDS at an arrow prompt in the database.

For example, INPADOC has three additional Entry Date fields and seven additional Update Date fields. These are shown in the tables extracted from the search fields section of INPADOC's Database Summary Sheet. Search examples follow each table.

# Search Tip

## Entry Date fields

| Search Field Name            | Search Code |
|------------------------------|-------------|
| Entry Date                   | /ED         |
| Entry Date New Patent Family | /EDF        |
| Entry Date Patent            | /EDP        |
| Entry Date Priority          | /EDPR       |

Use /EDF to search for updates to the search topic (L4 in this example) for November and December 2005. Note the difference between /ED and /EDF for the L4 search strategy.

```
=> S L4 AND 20051101-20051231/EDF
L6          58 L4 AND 20051101-20051231/EDF
=> S L4 AND 20051101-20051231/ED
L7          170 L4 AND 20051101-20051231/ED
```

## Update Date fields

| Search Field Name                                       | Search Code |
|---------------------------------------------------------|-------------|
| Update Date                                             | /UP         |
| Update Date All Patent Changes                          | /UPM        |
| Update Date New Patent Family Record                    | /UPFD       |
| Update Date New Publication and/or Legal Status Changes | /UPFE       |
| Update Date Patent Family (All Updates)                 | /UPFA       |
| Update Date Patent Family Bibliographic                 | /UPFB       |
| Update Date Patent Family (Legal Status)                | /UPFL       |
| Update Date Patent Family Publication Level             | /UPFP       |

Note the difference between /UP and /UPFL for the L4 search strategy.

```
=> S L4 AND 20051101-20051231/UP
L8  403 L4 AND 20051101-20051231/UP
=> S L4 AND 20051101-20051231/UPFL
L9  2768 L4 AND 20051101-20051231/UPFL
```

In databases such as INPADOC, be sure to understand the various options and which one(s) will suit your research needs for a manual current-awareness search.

## Additional resources

For information about automatic current-awareness alerts, visit: Mastering STN, SDI Commands:  
[www.cas.org/training/stncommands/sdi.html](http://www.cas.org/training/stncommands/sdi.html)

Current-Awareness Alerts in Single Files on STN Quick Reference Card available at:  
[www.cas.org/ONLINE/QR/currentaware.pdf](http://www.cas.org/ONLINE/QR/currentaware.pdf)

Multifile Current-Awareness Alerts (SDIs) Quick Reference Card available at:  
[www.cas.org/ONLINE/QR/multisdi.pdf](http://www.cas.org/ONLINE/QR/multisdi.pdf)

Find specific articles on current-awareness alerts in 2005 issues of *STNews*:

*Monitoring legal status in INPADOC*, May/June 2005

*Monitoring patent families in INPADOC*, July/August 2005

Or enter HELP ALERT at an arrow prompt in any database, including HOME.

## Variable group analysis enhanced in Version 8.01

Version 8.01 of STN Express with *Discover!* introduced two enhancements to the Variable Group (R-group) Analysis Table Tool. You now have the option to:

- **Use structure skeleton, ignore bonds** when defining the common structure
- Include the **Base Structure** in your table

This article describes these new options and their impact on the Variable Group Analysis Table.

For information about saving your answers for analysis and accessing the Variable Group Analysis Table Tool, refer to the January/February 2004 issue of *STNews*.

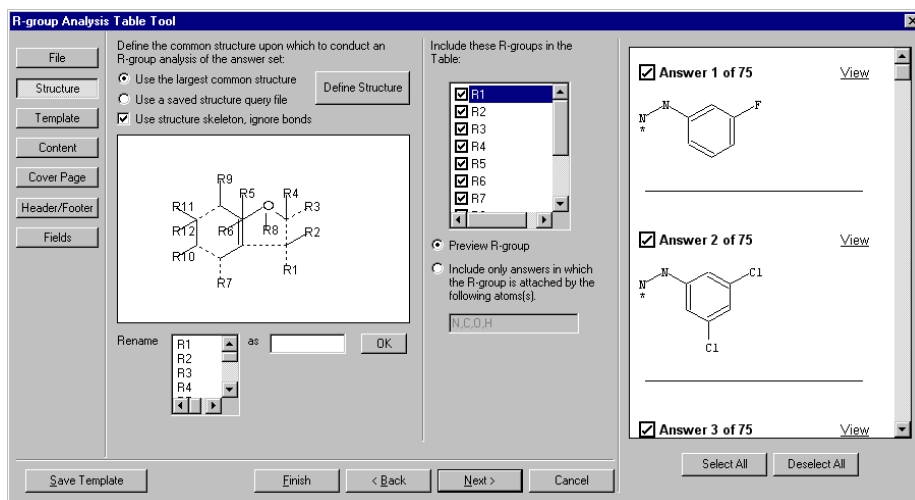
### Use structure skeleton, ignore bonds

In the Structure tab of the Variable Group Analysis Table Tool, you can now select **Use structure skeleton, ignore bonds** if you want the bonds to be ignored when the common structure is defined.

For example, to generate the largest common structure using the structure skeleton with bonds ignored, select **Use the largest common structure** and **Use structure skeleton, ignore bonds**. Then click **Define Structure**.

STN Express<sup>®</sup> with  
*Discover!*

**Variable Group (R-group) Analysis Table Tool now lets you ignore bonds when the common structure is defined. You can also include the base structure in tables.**



*The **Use structure skeleton, ignore bonds** option ignores bonds when the common structure is defined.*



## Verifying IPC codes with the IPC thesaurus in CA/CAPLUS and USPATFULL/USPAT2

With the IPC Reform-related changes to CA/CAPLUS and USPATFULL/USPAT2, the most frequently asked question is:

*How can I verify if a previously used IPC code is still valid and if there are new or additional IPC Reform codes for a given topic?*

Verifying and searching IPCs is easy to do in CA/CAPLUS and USPATFULL/USPAT2 if you keep in mind the following:

- Use the /IPC field code in CA/CAPLUS and USPATFULL/USPAT2 to EXPAND or SEARCH. The /IPC field contains all IPCs (pre- and post-IPC Reform) for the records in each database and will continue to be updated. Previously used IPC fields, such as /ICM (Main IPCs) or /IC (Main and Secondary IPCs), will not be updated with post-Reform IPC codes from newly issued patent documents.
- Verify any IPC codes for your search strategies against the revised IPC manual or in the online thesaurus in CA/CAPLUS and USPATFULL/USPAT2.
- You can enter your previously used IPC code in SEARCH or EXPAND command without making any changes; the system automatically converts the IPC code to the new format.

To find terms in the IPC thesaurus, use EXPAND followed by a term, a plus symbol (+), a code for the type of thesaurus terms you want to see, e.g., NT for narrower terms, and the field code. Each IPC is displayed as an E-number with postings. Each IPC code has information about when the code was valid. To search terms from a thesaurus, use the SEARCH command followed by a term or E-number, a plus symbol, a code for the type of thesaurus terms, and the field code.

### Relationship codes for the IPC thesaurus

| Code  | Content                                                      | Examples                |
|-------|--------------------------------------------------------------|-------------------------|
| ALL   | All Associated Terms (BT, SELF, NT, RT)                      | E C01C003-00+ALL/IPC    |
| BRO   | Complete Class                                               | E C01C+BRO/IPC          |
| BT    | Broader Terms (BT, SELF)                                     | E C01F001-00+BT/IPC     |
| ED    | Complete title of the SELF term and the IPC manual edition   | E C01F001-00+ED/IPC     |
| HIE   | Hierarchy Terms (Broader and Narrower Terms) (BT, SELF, NT)  | E C01C003-00+HIE/IPC    |
| INDEX | Complete title of the SELF term                              | E C01F001-00+INDEX/IPC  |
| KT    | Keyword Terms (catchwords) (SELF, KT)                        | E CYANOGEN+KT/IPC       |
| NEXT  | Next Classification                                          | E C01C001-00+NEXT5/IPC  |
| NT    | Narrower Terms (SELF, NT)                                    | E C01C+NT/IPC           |
| PREV  | Previous Classification                                      | E C01C001-12+PREV10/IPC |
| RT    | Related Terms (SELF, RT)                                     | E C01C003-20+RT/IPC     |
| TI    | Complete Title of the SELF Term and Broader Terms (BT, SELF) | E C01F001-00+TI/IPC     |

**In pre-IPC Reform searches for patents on chocolate substitutes, IPC A23G001-00 was used as the search term in the /IC field of CAPLUS and USPATFULL. What IPCs should be used now?**

```

=> FILE CAPLUS

=> E A23G001-00/IPC
E#  FREQUENCY  AT  TERM
--  -
E1   10532     1  A23G/IPC
E2   2313      1  A23G0001/IPC
E3   2045     2 --> A23G0001-00/IPC
E4   122      2  A23G0001-02/IPC
E5   119      2  A23G0001-04/IPC
E6    1       1  A23G0001-05/IPC
E7   15       2  A23G0001-06/IPC
E8    6       2  A23G0001-08/IPC
E9    1       1  A23G0001-09/IPC
E10  53       2  A23G0001-10/IPC
E11  1        1  A23G0001-100/IPC
E12  23       2  A23G0001-12/IPC
    
```

*Enter CAPLUS, HCAPLUS, or ZCAPLUS.*

*In EXPAND, enter the IPC for chocolate substitutes in the /IPC field.*

# Patent Interchange



USPATFULLL also provides the IPC thesaurus in the /IPC field. You can EXPAND on the /IPC thesaurus terms before searching them in USPATFULL. Alternatively, you can conduct this search in USPATFULL by searching the CAPLUS query (L1).

```

=> FILE USPATFULL

=> S L1
    1100 A23G0001-00+NT/IPC
        (30 TERMS)
    1 A23G0001-30+NT/IPC
        (14 TERMS)
L2 1100 A23G0001-00+NT/IPC OR
    A23G0001-30+NT/IPC
    
```

## Additional resources

Additional information about IPC Reform and STN databases can be viewed at: [www.cas.org/EO/ipcreform.html](http://www.cas.org/EO/ipcreform.html)

```

=> E E3+ALL/IPC
E1 10532 BT1 A23G/IPC
COCOA; COCOA PRODUCTS, e.g. CHOCOLATE;
SUBSTITUTES FOR COCOA OR COCOA PRODUCTS;
CONFECTIONERY; CHEWING GUM; ICE-CREAM;
PREPARATION THEREOF
Note
(1) In this subclass, the following term
is used with the meaning indicated:
- "ice-cream" includes any edible frozen
or congealed semi-liquid or pasty
substance, e.g. slush-ice.
(2) In this subclass, subject matter which
cannot be completely classified in a
single one of the main groups should be
classified in each relevant main group.
E2 2045 --> A23G0001-00/IPC
Cocoa; Cocoa products, e.g. chocolate;
Substitutes therefor (kitchen equipment
for cocoa preparation A47J, e.g. apparatus
for making beverages A47J0031-00)
CORE
VALID FROM 19680901 TO PRESENT
( IPC EDITION: 1-8 )
E3 122 NT1 A23G0001-02/IPC
. Preliminary treatment, e.g. fermentation
of cocoa (machines for roasting cocoa
A23N0012-00)
CORE
VALID FROM 19680901 TO PRESENT
( IPC EDITION: 1-8 )
E4 119 NT1 A23G0001-04/IPC
. Apparatus specially adapted for
manufacture or treatment of cocoa or cocoa
products (machines for roasting cocoa
A23N0012-00; crushing or grinding
apparatus in general B02C)
CORE
VALID FROM 19680901 TO PRESENT
( IPC EDITION: 1-8 )
.
.
E29 0 NT3 A23G0001-52/IPC
. . . Aerated, foamed, cellular or porous
products
ADVANCED
VALID FROM 20060101 TO PRESENT
( IPC EDITION: 8 )
E30 0 NT3 A23G0001-54/IPC
. . . Composite products, e.g. layered,
coated, filled
ADVANCED
VALID FROM 20060101 TO PRESENT
( IPC EDITION: 8 )
E31 0 NT2 A23G0001-56/IPC
. . Liquid products; Solid products in the
form of powders, flakes or granules for
making liquid products, e.g. for making
chocolate milk
ADVANCED
VALID FROM 20060101 TO PRESENT
( IPC EDITION: 8 )
***** END *****

=> S E2+NT/IPC OR E18+NT/IPC
2308 A23G0001-00+NT/IPC (30 TERMS)
3 A23G0001-30+NT/IPC (14 TERMS)
L1 2308 A23G0001-00+NT/IPC OR A23G0001-30+NT/IPC
    
```

Enter E3 followed by +ALL in the /IPC field to view all of the thesaurus terms for the IPCs associated with E3. The IPC is listed in a hierarchy of Broader (BT) and Narrower (NT) Terms.

In this case, there are new additional IPC codes created by the IPC Reform.

Each IPC is also associated with a keyword (CORE or ADVANCED) that indicates the IPC level.

To search the IPC and the Narrower Terms, enter the E-number from EXPAND followed by +NT and the field code (/IPC).

## 2006 prices available

A copy of both the 2006 STN Price List and 2006 STN Express with *Discover!* Price List are included with this issue of *STNews*.

2006 STN prices can also be accessed by typing HELP PRICE in a database and are also available at:  
[www.cas.org/stnprice.pdf](http://www.cas.org/stnprice.pdf)

2006 STN Express with *Discover!* prices are also available at:  
[www.cas.org/ONLINE/STN/expressprices.html](http://www.cas.org/ONLINE/STN/expressprices.html)

The 2006 STN Easy and STN Easy for Intranets Price List is also available.

2006 STN Easy and STN Easy for Intranets prices are also available at:  
[stneasy.cas.org/html/english/pricecol.html](http://stneasy.cas.org/html/english/pricecol.html)

## Wall charts available

The 2006 STN Easy and STN Easy for Intranets databases and categories wall chart is available.

The 2006 STN databases and clusters wall chart is also available.

To receive your copy, contact CAS Customer Care at [help@cas.org](mailto:help@cas.org). Be sure to include your name and complete mailing address with your request.

## Saved answer system limit increased

The saved answer limit has been increased from 200,000 to 400,000, allowing you more flexibility with complex searches. The temporary saved answer limit remains at 500,000.

For more information about STN system limits, enter HELP LIMIT at an arrow prompt.

## STN on the Web now offers new Windows structure plug-in

A new Windows-only structure plug-in, Version 2.1.1, is now available for STN on the Web. With the new plug-in, you can now draw structures in which:

- A ring bond is normalized when a repeating group is used in the ring
- A ring bond is exact/normalized when the ring is part of a VPA (Variable Points of Attachment) group and the query contains a normalized ring
- Alternating single-double ring bonds are normalized when the ring is isolated and in a repeating group

To download the new plug-in, click **Get Structure Plug-in** on the left-hand navigation frame. The downloaded file is approximately 2.32 MB.

## Discover the value of STN<sup>®</sup> AnaVist<sup>™</sup> with a visualization usage credit

From March 1 until August 31, 2006, you can explore STN AnaVist while taking advantage of a \$500 credit\* toward STN AnaVist visualization usage.

The \$500 credit applies to the following fee-generating activities:

- Search
- Visualize
- Subset visualize
- Saved visualization set

The \$500 credit does not apply to the following fee-generating activities:

- Display, Save, or Print document records
- CAplus download documents and download visualization

STN AnaVist is interactive analysis and visualization software that provides unique insights into trends and patterns in scientific and patent information. STN AnaVist can help you answer complex questions and provide you with information that can be used to make better business decisions faster.

Because of special introductory pricing, the STN AnaVist software is currently discounted 100%.

To obtain the STN AnaVist software and for more information on STN AnaVist, visit: [www.cas.org/stnavist/](http://www.cas.org/stnavist/)

Please contact your local STN Service Center with questions.


\* This credit is valid for all current STN Login IDs. *Note: STN Easy-only Login IDs are excluded.* The \$500 credit will be automatically carried over month-to-month until the \$500 is used or until August 31, 2006. This offer is currently not available in Japan.

# Take Note

## X.25 communication option will no longer be available after June 2006

If you currently access STN Express with *Discover!* via dial-up, also known as Value Added Network (VAN) or X.25 access, you will need to change your means of access by June 2006. At that time, there will no longer be an X.25 communication method for STN-Columbus and STN-Tokyo customers.

To ensure that your future access to STN is uninterrupted, please change now to Internet access. Simply follow these steps:

1. Open STN Express with *Discover!*
2. Click the **Setup** button  on the main toolbar.
3. In the STN Setup window, click **Modify**.
4. Select **Winsock (Internet)** from the Connect via: drop-down menu.

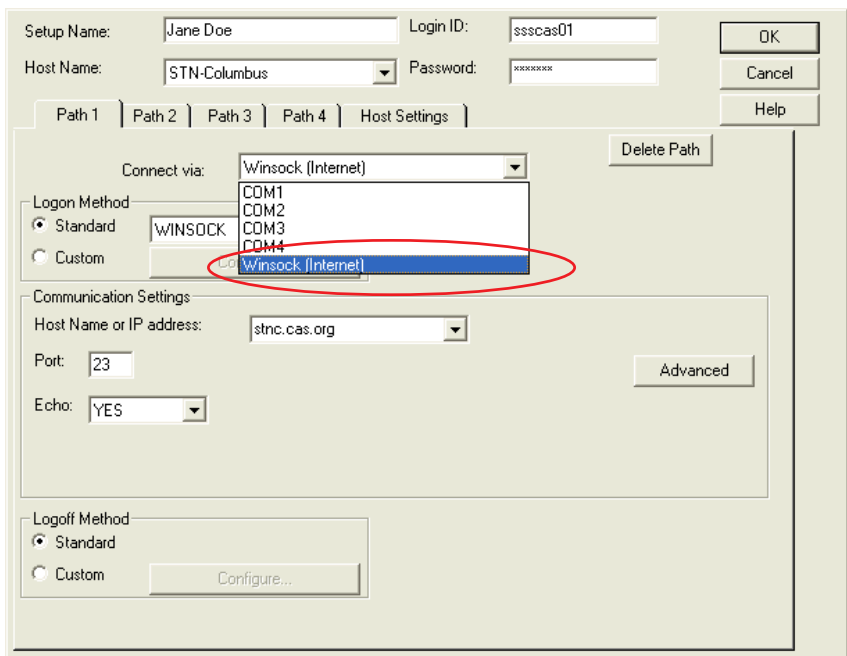
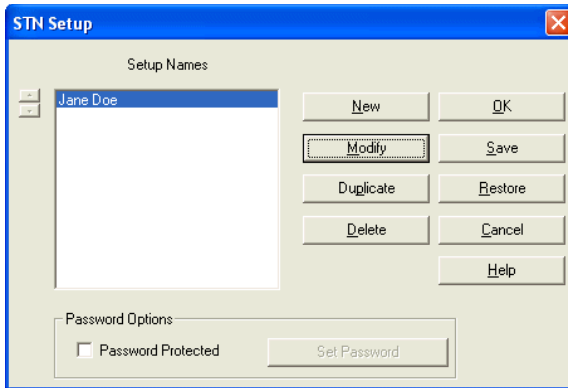
Or, contact your local STN Service Center for assistance.

### Secure access options

Two secure access options have been added to the STN Express with *Discover!* software to alleviate concerns about the safety of data transmitted over the Internet. You can now access STN through a:

- Secure telnet session using RSA encryption in Version 8.0 and higher
- Secured Socket Layer Virtual Private Network (SSL VPN) in Version 8.01 and higher

It is not, however, recommended that you utilize both methods during a single session.



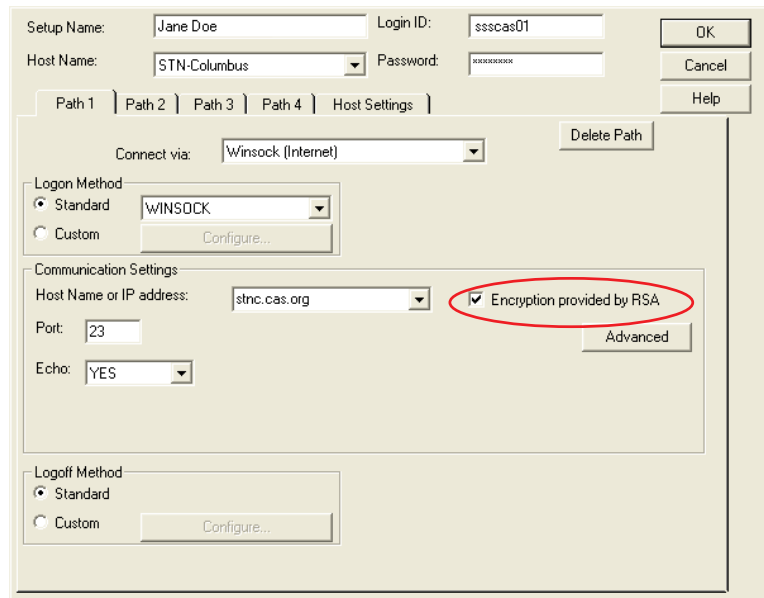
# Take Note

## Secure Telnet session with RSA encryption

STN Express with *Discover!* allows you to encrypt the information that you send over the Internet during a telnet session. Version 8.0 and higher contains embedded software that uses an Advanced Encryption Standard (AES) algorithm provided by RSA Security Inc. with 128-bit encryption keys. In order to utilize this option, port 23 (Telnet) must be open on your firewall.

To secure your Telnet sessions using RSA encryption:

1. Start STN Express with *Discover!*
2. Click the **Setup** button from the main menu or toolbar.
3. Modify your logon setup by selecting the **Encryption provided by RSA**.



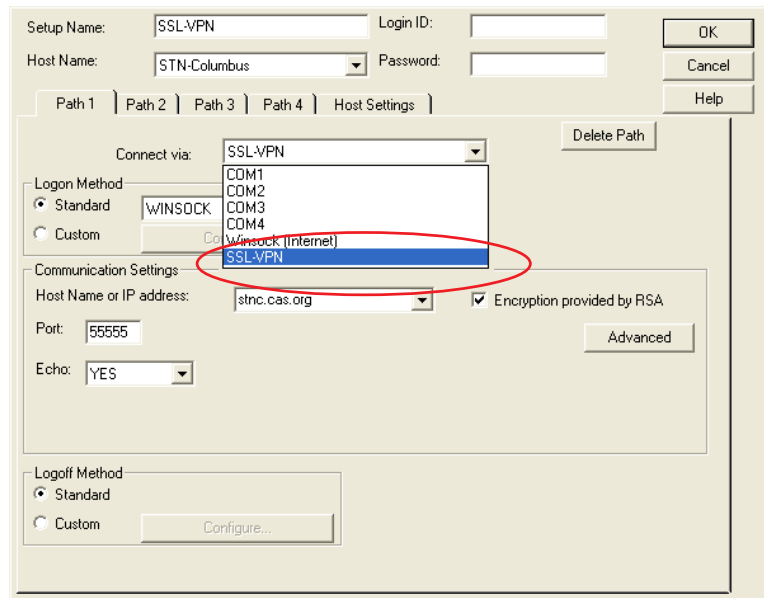
## SSL VPN connection

Virtual Private Networks (VPNs) establish secure logical networks using the public Internet. VPNs use encryption and other security mechanisms to ensure that only authorized users can access the network and that the data cannot be intercepted.

STN Express with *Discover!*, Version 8.01 and higher, provides the ability to use a Java applet on your desktop to tunnel the Telnet session via HTTPS. When a Java Virtual Machine is available on your desktop, no additional support from your IT department is needed. For SSL VPN communications, port 23 (Telnet) is not required to be open on your company's firewall. However, an internet connection that supports the HTTPS protocol through port 443, a commonly open port, is needed.

To establish a connection to STN via SSL VPN using STN Express with *Discover!*:

1. Start STN Express with *Discover!*
2. Click the **Setup** button from the main menu or toolbar.
3. Create a new logon setup. Select or Create a logon profile, e.g., "SSL-VPN," with the following settings in the Setup



Definition window:

- Setup Name: **SSL-VPN**
- Host Name: **STN-Columbus (or STN-Karlsruhe or STN-Tokyo)**
- Connect via: **SSL-VPN**
- Logon Method: **Standard (Winsock)**
- Host Name: **localhost**
- Port: **55555 for STN-Columbus or STN-Tokyo**

Port: **6000 for STN-Karlsruhe**

Click **OK**.

4. From the **Web** menu, choose the appropriate STN Secure Connection for your STN Service Center.
5. A browser window is launched. Choose the appropriate STN Service Center.

# Take Note

6. A new browser window opens, establishing the secure application manager session.

The Session Manager window shows the status of the SSL-VPN connection. **Do NOT close the Session Manager window until you have finished your STN session.** Doing so will terminate your online session.

*Note: If your browser uses a pop-up blocker for all sites, you may need to adjust your pop-up blocker settings to allow [stnconnect.cas.org](http://stnconnect.cas.org).*

7. Within STN Express, log on to STN using the SSL-VPN logon setup you created.

*Note: If the Session Manager "Sent" and "Received" packets remain at 0 bytes, you did not successfully log on using SSL VPN and your session is not encrypted. Log off and log on again using your SSL VPN setup.*

Contact your local STN Service Center for assistance with establishing a secure connection to STN.

## Additional resources

Additional information is available in the STN Express with *Discover!* Help files and the STN Express with *Discover!*, Version 8.0 and 8.01, User Guides at: [www.cas.org/ONLINE/STN/expresources.html](http://www.cas.org/ONLINE/STN/expresources.html)

## 2006 CAS exhibits

[www.cas.org/exhibit.html](http://www.cas.org/exhibit.html)

### IPI/ConfEX (International Patent Information Conference & Exhibit)

March 5-8  
Athens, Greece

### NCCC (Netherlands Catalysis and Chemistry Conference)

March 6-8  
Noordwijkerhout,  
The Netherlands

### PITTCON (Pittsburgh Conference)

March 12-17  
Orlando, Florida

### Drug Discovery Technology Europe

March 13-16  
London, United Kingdom

### Information Days Congress (Tietoasiantuntijat)

March 22-23  
Helsinki, Finland

### Japan Society for Bioscience, Biotechnology, & Agrochemistry Annual Meeting

March 25-28  
Kyoto, Japan

### ACS National Spring Meeting

March 26-30  
Atlanta, Georgia

### Japan Chemical Society Annual Meeting

March 27-30  
Chiba, Japan

## STNewsline—did you sign up?

STNewsline, our electronic newsletter, is published every month. Are you receiving it?

You are not automatically signed up to receive STNewsline just because you receive *STNews*. We need your e-mail address to send it to you.

To receive the latest news about STN by e-mail, visit:

[www.cas.org/STNEWS/signup.html](http://www.cas.org/STNEWS/signup.html)

Or, complete this form and fax it to: *STNews* Editor, 614-447-3837.

**YES! Sign me up to receive STNewsline:**

NAME

E-MAIL ADDRESS

ORGANIZATION

COUNTRY

## 2006 STN instructor-led seminars

[www.cas.org/training/schedule.html](http://www.cas.org/training/schedule.html)

### Atlanta, Georgia

3/28 1:00 p.m.-4:30 p.m. Derwent World Patents Index on STN\*

### Chicago, Illinois

4/4 9:00 a.m.-12:00 p.m. STN Basics  
4/4 1:00 p.m.-4:00 p.m. STN Intermediate  
4/5 9:00 a.m.-12:00 p.m. Basic Patent Search Techniques  
4/5 1:00 p.m.-4:00 p.m. Patent Family and Legal Status Search Techniques  
4/6 9:00 a.m.-12:00 p.m. STN User Update  
4/6 1:00 p.m.-4:00 p.m. Analysis and Visualization with STN AnaVist

### Montreal, Quebec, Canada

4/11 9:00 a.m.-12:00 p.m. Basic CAplus Subject Search Techniques  
4/11 1:00 p.m.-4:00 p.m. Advanced Subject Search Techniques in CAplus  
4/12 9:00 a.m.-12:00 p.m. STN User Update  
4/12 1:00 p.m.-4:00 p.m. Analysis and Visualization with STN

### Edison, New Jersey

4/18 9:00 a.m.-4:00 p.m. Structure Searching in REGISTRY  
4/19 9:00 a.m.-12:00 p.m. Markush Searching in the Patent Literature  
4/19 1:00 p.m.-4:00 p.m. Advanced Subject Search Techniques in CAplus  
4/20 9:00 a.m.-4:00 p.m. STN Express with *Discover!*, Version 8.01, and STN AnaVist – Advanced Tips and Tricks

### St. Louis, Missouri

3/14 9:00 a.m.-12:00 p.m. STN User Update  
3/14 1:00 p.m.-4:00 p.m. Analysis and Visualization with STN AnaVist

\*Offered by FIZ Karlsruhe.

All STN instructor-led seminars in North America are free, but registration is required.

To register, visit:

[www.cas.org/training/regform.html](http://www.cas.org/training/regform.html)

## 2006 CAS e-Seminars

[www.cas.org/training/schedule.html](http://www.cas.org/training/schedule.html)

2/28 1:00-2:00 p.m. STN: Finding Antibodies & Immunoglobulins  
3/9 9:00 am- 10:00 a.m. STN: Finding Antibodies & Immunoglobulins  
3/28 1:00-2:00 p.m. STN: Searching for Engineering Information  
4/13 9:00-10:00 a.m. STN: Searching for Engineering Information  
4/25 1:00-2:00 p.m. STN: Capitalizing on IPC Reform  
5/11 9:00-10:00 a.m. STN: Capitalizing on IPC Reform  
5/30 1:00-2:00 p.m. STN: Property searching in CAS REGISTRY  
6/8 9:00-10:00 a.m. STN: Property searching in CAS REGISTRY  
6/27 1:00-2:00 p.m. STN: Is that patent still valid? Finding patent expirations and extensions  
7/13 9:00-10:00 a.m. STN: Is that patent still valid? Finding patent expirations and extensions

All times are U.S. Eastern Time.

For a description of each e-Seminar and to register, visit:

<https://casevents.webex.com/>

## STNews

STNews is written and produced cooperatively by Chemical Abstracts Service and FIZ Karlsruhe, and printed in three separate editions.

### Staff, North American Edition:

Editors: Kristina Gobel  
Crystal Poole

### Contributing Editors:

Jim Blake  
Elizabeth Haines

### FIZ Karlsruhe

Dr. Gerhard Herlan

### Design/Production:

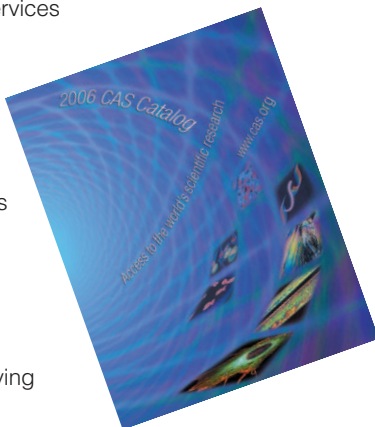
Pat Farnlacher  
Nadine Seeley

For the North American Edition © 2006 American Chemical Society. Quoting or republishing of material from STNews is encouraged provided that acknowledgement is made of STNews as the source. CAS requests that a copy of the reproduced material be sent to CAS Customer Care, P.O. Box 3012, Columbus, OH 43210-0012 U.S.A. Please send all address changes to CAS, P.O. Box 3012, Columbus, OH 43210-0012 U.S.A. E-mail us at [help@cas.org](mailto:help@cas.org).

## 2006 CAS Catalog available

The 2006 CAS Catalog provides an overview of:

- All CAS products and services
- CAS database content
- STN databases
- STN database clusters
- STN database producers
- CAS Customer Care contact information
- And more



Are you interested in receiving a free copy?

To request a catalog in print or on CD, contact CAS Customer Care at [help@cas.org](mailto:help@cas.org). Be sure to include your name and complete address with your request. Also specify if you would like print or CD.

Or use the STN User Documentation Order Form available with this issue of *STNews* or at: [www.cas.org/ONLINE/STN/docform.pdf](http://www.cas.org/ONLINE/STN/docform.pdf).

## Previously recorded CAS e-Seminars available

<https://casevents.webex.com>

Previously recorded CAS e-Seminars include:

### STN AnaVist

- STN: Introduction to STN AnaVist
- Creating Result Sets for Use in STN AnaVist
- Going Beyond Basic Navigation on STN AnaVist
- Using the Custom Grouping Capabilities in STN AnaVist
- Using the STN AnaVist Interactive Visualization Workspace

### STN Express with *Discover!*

- STN: Using *Discover!* Wizards in STN Express
- STN: What's New with STN Express? (Version 8.0)
- STN: Visualization Tools in STN Express with *Discover!* Analysis Edition (Version 7.01)
- STN: Post-processing Search Results with the Analysis Edition of STN Express with *Discover!* (Version 7.0)

### Structure Techniques

- STN: Structure and Substructure Searching Tips
- STN: Advanced Structure Search Techniques – Ring Information
- STN: Advanced Structure Searching with Filters/Screens
- STN: Introduction to Polymers
- STN: Finding Post-Treated and Blended Polymers
- STN: Organometallics and Coordination Compounds
- STN: Reaction Searching
- STN: All About MARPAT
- STN: Advanced MARPAT Techniques
- STN: Stereochemistry in the CAS Registry File
- STN: Using Boolean Operators in Structure Searching

### Patent Searching

- STN: Increasing Confidence in Search Results
- STN: Expanding Your Prior Art Search with Controlled Terminology
- STN: Searching for Patent Families
- STN: Multifile Patent Searching
- STN: Patent Citation Searching
- STN: Improving Searches by Including Patent Classification Codes
- STN: Biotech Patent Validity Tips
- STN: "Biotextology" – Text Search Techniques for Biological Information

### Miscellaneous

- STN: Have It Your Way – Customizing Your STN Account
- STN: Automating Your Search
- STN: Multiple Methods of Keeping Current
- STN: Finding Regulatory Information
- STN: Strategies for Finding Novel Formulations
- STN: Using the Cambridge Scientific Abstract (CSA) Files
- STN: Finding Clinical Trial and Drug Pipeline Information



## CAS contacts

**CAS Customer Care:** Phone: 800-753-4227 (North America) or 614-447-3700 (worldwide)

**CAS:** Phone: 800-848-6538 (North America) or 614-447-3600 (worldwide)

**E-mail:** [help@cas.org](mailto:help@cas.org)

**CAS web page:** [www.cas.org](http://www.cas.org)

**STN web page:** [www.cas.org/stn.html](http://www.cas.org/stn.html)

**Information Professionals:** [www.cas.org/infopro/](http://www.cas.org/infopro/)

**Patent Information on STN:** [www.cas.org/patents/](http://www.cas.org/patents/)

**STNews:** [www.cas.org/STNEWS/stnewscover.html](http://www.cas.org/STNEWS/stnewscover.html)

**STNews back issues:** [www.cas.org/STNEWS/backissue.html](http://www.cas.org/STNEWS/backissue.html)

# In This Issue

## Feature

Exploring property information using STN ..... 2

## Database News

BEILSTEIN, CA/CAPLUS, EMBASE/EMBAL, ENCOMPLIT/ENCOMPLIT2  
ENCOMPPAT/ENCOMPPAT2, IFIPAT/IFIUDB/IFICDB ..... 5  
INPADOC ..... 6  
MARPAT, MARPATprev, MEDLINE/LMEDLINE, PAPERCHEM2, TOXCENTER,  
TULSA, USPATFULL/USPAT2, WPIDS/WPINDEX/WPIX/WPIFV ..... 7

## Ask REGgie

Searching and displaying experimental spectral data in REGISTRY ..... 9

## Search Tip

Manual current-awareness searching on STN ..... 12

## STN Expressway

Variable group analysis enhanced  
in STN Express with *Discover!*, Version 8.01 ..... 14

## Patent Interchange

Verifying IPC codes with the IPC thesaurus  
in CA/CAPLUS and USPATFULL/USPAT2 ..... 16

## Take Note

2006 prices available ..... 18  
Wall charts available ..... 18  
Saved answer system limit increased ..... 18  
STN on the Web now offers new Windows structure plug-in ..... 18  
Discover the value of STN AnaVist with a visualization usage credit ..... 18  
X.25 communication option will no longer be available after June 2006 ..... 18  
2006 CAS e-Seminars ..... 22

## Included with this issue

OCEAN, PAPERCHEM2, POLLUAB, PROMT, and WSCA Database Summary Sheets,  
2006 STN Price List, 2006 STN Express with *Discover!* Price List, and STN User  
Documentation Order Form

*In case you missed it:*

## STNews Sep/Oct

- Using STN for competitive analysis
- Searching for block polymers in REGISTRY
- STN AnaVist makes data grouping effortless
- STN on the Web structure uploading and transcripts enhanced
- BEILSTEIN: a source for life science information

## STNews Nov/Dec

- 2005-Year in review
- Maximizing use of the SET command
- Utilizing SET RANGE or RANGE= in IFIPAT/IFICDB/IFIUDB
- STN AnaVist, Version 1.01, allows the export/download of CAPLUS documents
- Using STN AnaVist for competitive analysis of patents
- STN Express with *Discover!*, Analysis Edition, Version 8.01 for Windows, now available

You can find it easily by searching the CAS web site at:  
[www.cas.org/websearch.html](http://www.cas.org/websearch.html)

## In Japan

Japan Association for International  
Chemical Information (JAICI)  
STN Japan  
Nakai Building  
6-25-4 Honkomagome, Bunkyo-ku  
Tokyo 113-0021, Japan  
Phone: 81 3-5978-3601 (Technical Service)  
Phone: 81 3-5978-3621 (Customer Service)  
Fax: 81 3-5978-3600  
E-mail: [helpdesk@jaici.or.jp](mailto:helpdesk@jaici.or.jp) (Technical Service)  
E-mail: [cas-stn@jaici.or.jp](mailto:cas-stn@jaici.or.jp) (Customer Service)  
Internet: [www.jaici.or.jp](http://www.jaici.or.jp)

Japan Science and Technology  
Agency (JST)  
STN Japan  
5-3 Yonbancho, Chiyoda-ku  
Tokyo 102-8666, Japan  
Phone: 81 3-5214-8493  
Fax: 81 3-5214-8450  
E-mail: [helpdesk@mr.jst.go.jp](mailto:helpdesk@mr.jst.go.jp)  
Internet: [pr.jst.go.jp/db/STN/](http://pr.jst.go.jp/db/STN/)

## In Europe

FIZ Karlsruhe  
STN Europe  
P.O. Box 2465  
76012 Karlsruhe  
Germany  
Phone: (+49) 7247808-555  
Fax: (+49) 7247808-259  
E-mail: [helpdesk@fiz-karlsruhe.de](mailto:helpdesk@fiz-karlsruhe.de)  
Internet: [www.stn-international.de](http://www.stn-international.de)

## In North America

Chemical Abstracts Service  
STN North America  
P.O. Box 3012  
Columbus, Ohio 43210-0012 U.S.A.  
Phone: 800-753-4227 (North America)  
614-447-3700 (worldwide)  
Fax: 614-447-3751  
E-mail: [help@cas.org](mailto:help@cas.org)  
Internet: [www.cas.org/stn.html](http://www.cas.org/stn.html)

