



# **Using the CAS Registry File on STN<sup>®</sup>**

*Answers to  
Practice Problems  
in the Student Manual*



Search strategies are shown in both LRegistry and Registry, if there are modifications to a strategy.

## Lesson 2

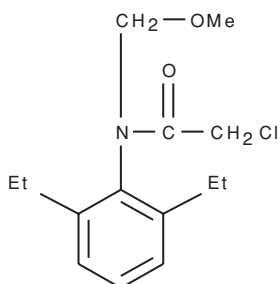
### 1. What is the chemical composition of Alachlor?

```
=> FILE LREGISTRY
=> E ALACHLOR/CN
E1 1 ALABANDITE (MNS)/CN
E2 1 ALABASTER NO. 3/CN
E3 1 → ALACHLOR/CN
E4 1 ALACHLOR-ATRAZINE MIXTURE/CN
E5 1 ALACHLOR-CYANAZINE MIXT./CN
E6 1 ALACHLOR-METRIBUZIN MIXT./CN
E7 1 ALAFOSFALIN/CN
E8 1 ALAIXOL 11/CN
E9 1 ALAMETHICIN I, 6-(2-METHYLALANINE)-8-L-LEUCINE-9-DE-L-
    VALINE-12-(2-METHYLALANINE)-13A-ENDO-(2-METHYLALANINE)
    -18-L-GLUTAMINE-19-(N1-(1-((ACETYLOXY)METHYL)-3-METHYL
    BUTYL)-L-GLUTAMAMIDE)-, (S)-/CN
E10 1 ALAMINE 11/CN
E11 1 ALAMINE 15/CN
E12 1 ALAMINE 26D/CN

=> S E3
L1 1 ALACHLOR/CN

=> D
L1 ANSWER 1 OF 1 COPYRIGHT 1996 ACS
RN 15972-60-8 LREGISTRY
CN Acetamide, 2-chloro-N-(2,6-diethylphenyl)-N-(methoxymethyl)- (9CI)
   (CA INDEX NAME)
OTHER CA INDEX NAMES:
CN Acetanilide, 2-chloro-2',6'-diethyl-N-(methoxymethyl)- (8CI)
OTHER NAMES:
CN 2',6'-Diethyl-N-(methoxymethyl)-2-chloroacetanilide
CN 2-Chloro-2',6'-diethyl-N-methoxymethylacetanilide
CN ***Alachlor***
CN Alapaz
CN CP 50144
CN Lasagrin
CN Lasso
CN Lazo
CN Metachlor
CN Methachlor
CN Micro-Tech
CN Nitala
CN Perfect
CN Satochlor
FS 3D CONCORD
MF C14 H20 Cl N O2
CI COM
LC STN Files: ANABSTR, BEILSTEIN*, BIOBUSINESS, BIOSIS, CA, CABA,
    CANCERLIT, CAPLUS, CAPREVIEWS, CASREACT, CEN, CHEMCATS, CHEMLIST,
    CBNB, CHEMSAFE, CIN, CJACS, CSCHEM, CSNB, EMBASE, HSDB*, IFICDB,
    IFIPAT, IFIUDB, MEDLINE, MRCK*, MSDS-OHS, MSDS-PEST, MSDS-SUM,
    PDLCOM*, PNI, PROMT, RTECS*, SPECINFO, TOXLINE, TOXLIT, USPATFULL
    (*File contains numerically searchable property data)
```

Other Sources: EINECS\*\*  
(\*\*Enter CHEMLIST File for up-to-date regulatory information)



## 2. Find the CAS Registry Numbers for all Lexans.

=> FILE LREG

=> E LEXAN/CN

E1	1	LEXAMINE L 13/CN
E2	1	LEXAMINE M 13/CN
E3	1	→ LEXAN/CN
E4	1	LEXAN 100/CN
E5	1	LEXAN 100-111/CN
E6	1	LEXAN 101/CN
E7	1	LEXAN 101-111/CN
E8	1	LEXAN 101-112/CN
E9	1	LEXAN 101-131/CN
E10	1	LEXAN 103/CN
E11	1	LEXAN 104/CN
E12	1	LEXAN 105/CN

=> S LEXAN?/CN

L2	3	LEXAN?/CN
----	---	-----------

=> D RN HIT 1-3

L2	ANSWER 1 OF 3	COPYRIGHT 1996 ACS
RN	32844-27-2	LREGISTRY
OTHER NAMES:		
CN	***Lexan RL 1624***	

L2	ANSWER 2 OF 3	COPYRIGHT 1996 ACS
RN	28774-93-8	LREGISTRY
OTHER NAMES: CN ***Lexan SL 1007***		

L2 ANSWER 3 OF 3 COPYRIGHT 1996 ACS

RN 24936-68-3 LREGISTRY

OTHER NAMES:

CN \*\*\*Lexan\*\*\*  
CN \*\*\*Lexan 100\*\*\*  
CN \*\*\*Lexan 100-111\*\*\*  
CN \*\*\*Lexan 101\*\*\*  
CN \*\*\*Lexan 101-111\*\*\*  
CN \*\*\*Lexan 101-112\*\*\*  
CN \*\*\*Lexan 101-131\*\*\*  
CN \*\*\*Lexan 103\*\*\*  
CN \*\*\*Lexan 104\*\*\*  
CN \*\*\*Lexan 105\*\*\*  
CN \*\*\*Lexan 105-111\*\*\*  
CN \*\*\*Lexan 110A\*\*\*  
CN \*\*\*Lexan 120\*\*\*  
CN \*\*\*Lexan 121\*\*\*  
CN \*\*\*Lexan 121R\*\*\*  
CN \*\*\*Lexan 124R112\*\*\*  
CN \*\*\*Lexan 125\*\*\*  
CN \*\*\*Lexan 125A\*\*\*  
CN \*\*\*Lexan 130\*\*\*  
CN \*\*\*Lexan 131\*\*\*  
CN \*\*\*Lexan 131-111\*\*\*  
CN \*\*\*Lexan 134\*\*\*  
CN \*\*\*Lexan 135\*\*\*  
CN \*\*\*Lexan 135-111\*\*\*  
CN \*\*\*Lexan 135A\*\*\*  
CN \*\*\*Lexan 140\*\*\*  
CN \*\*\*Lexan 141\*\*\*  
CN \*\*\*Lexan 141-111N\*\*\*  
CN \*\*\*Lexan 141-112\*\*\*  
CN \*\*\*Lexan 144R\*\*\*  
CN \*\*\*Lexan 145\*\*\*  
CN \*\*\*Lexan 145-111\*\*\*  
CN \*\*\*Lexan 151\*\*\*  
CN \*\*\*Lexan 160\*\*\*  
CN \*\*\*Lexan 181\*\*\*  
CN \*\*\*Lexan 200\*\*\*  
CN \*\*\*Lexan 2014\*\*\*  
CN \*\*\*Lexan 220\*\*\*  
CN \*\*\*Lexan 303\*\*\*  
CN \*\*\*Lexan 9030\*\*\*  
CN \*\*\*Lexan 9034\*\*\*  
CN \*\*\*Lexan FL 900\*\*\*  
CN \*\*\*Lexan G 1382\*\*\*  
CN \*\*\*Lexan Grade 141\*\*\*  
CN \*\*\*Lexan HF 1130\*\*\*  
CN \*\*\*Lexan L 105A\*\*\*  
CN \*\*\*Lexan LDS 1990\*\*\*  
CN \*\*\*Lexan ML 3414\*\*\*  
CN \*\*\*Lexan ML 4403-111\*\*\*  
CN \*\*\*Lexan ML 4403III\*\*\*  
CN \*\*\*Lexan ML 9103\*\*\*  
CN \*\*\*Lexan RL 5221\*\*\*

## Lesson 2

### 3. Find the CAS Registry Number for arsenic trichloride.

=> FILE LREG

=>E ARSENIC TRICHLORIDE/CN

E1 1 ARSENIC THALLIUM SULFIDE (ASTL3S4)/CN  
E2 1 ARSENIC THIODIPHOSPHATE (AS2(P2S7))/CN  
E3 1 → ARSENIC TRICHLORIDE/CN  
E4 1 ARSENIC TRIFLUORIDE/CN  
E5 1 ARSENIC TRIHYDRIDE/CN  
E6 1 ARSENIC TRIIODIDE/CN  
E7 1 ARSENIC TRIOXIDE/CN  
E8 1 ARSENIC TRISELENIDE/CN  
E9 1 ARSENIC TRISULFIDE/CN  
E10 1 ARSENIC TRISULFIDE (AS2S3)/CN  
E11 1 ARSENIC YELLOW/CN  
E12 1 ARSENIC(1+)/CN

=> S E3

L3 1 "ARSENIC TRICHLORIDE"/CN

=> D RN

L3 ANSWER 1 OF 1 COPYRIGHT 1996 ACS  
RN 7784-34-1 LREGISTRY .

## Lesson 3

### 4. Search for cobaltocene or cobaltocenium compounds.

=> FILE LREG

=> S COBALTOCEN?

L4 5 COBALTOCEN?

=> D HIT 1-5

L4 ANSWER 1 OF 5 COPYRIGHT 1996 ACS

CN \*\*\*Cobaltocenium, (1,1-dimethylethyl)-, sulfate (1:1) (9CI)\*\*\*  
(CA INDEX NAME)

L4 ANSWER 2 OF 5 COPYRIGHT 1996 ACS

CN \*\*\*Cobaltocenium, (1,1-dimethylethyl)- (9CI)\*\*\* (CA INDEX NAME)

L4 ANSWER 3 OF 5 COPYRIGHT 1996 ACS

CN \*\*\*Cobaltocenium, (1-methylethyl)-, sulfate (1:1) (9CI)\*\*\* (CA  
INDEX NAME)

L4 ANSWER 4 OF 5 COPYRIGHT 1996 ACS

CN \*\*\*Cobaltocenium, (1-methylethyl)- (9CI)\*\*\* (CA INDEX NAME)

L4 ANSWER 5 OF 5 COPYRIGHT 1996 ACS

CN \*\*\*Cobaltocene, (ethylidene-C,C',C''-trimethyltricarbaundecaboran(12)-yl)- (9CI)\*\*\* (CA INDEX NAME)

OTHER CA INDEX NAMES:

CN \*\*\*Tricarbaundecaborane(12), cobaltocene deriv.\*\*\*

## Lesson 4

### 5. Find the CAS Registry Numbers for dibromobenzenes.

**=> FILE LREG**

**=> E C6H4BR2/MF**

E1	2	C6H4/MF
E2	1	C6H4BR/MF
E3	3	—> C6H4BR2/MF
E4	2	C6H4BR2FEO3/MF
E5	1	C6H4BR2N2O2/MF
E6	2	C6H4BR2O/MF
E7	2	C6H4BR2O2S/MF
E8	1	C6H4BR3N/MF
E9	3	C6H4BRCL/MF
E10	1	C6H4BRCLMG/MF
E11	1	C6H4BRCLN2O/MF
E12	2	C6H4BRCLO/MF

**=> S E3**

L1	3	C6H4BR2/MF
----	---	------------

**=> D SCAN IN**

L1	3 ANSWERS	COPYRIGHT 1996 ACS
IN		Benzene, 1,4-dibromo- (9CI)

HOW MANY MORE ANSWERS DO YOU WISH TO SCAN? (1):2

L1	3 ANSWERS	COPYRIGHT 1996 ACS
IN		Benzene, 1,3-dibromo- (9CI)

L1	3 ANSWERS	COPYRIGHT 1996 ACS
IN		Benzene, 1,2-dibromo- (9CI)

ALL ANSWERS HAVE BEEN SCANNED

**=> D RN 1-3**

L1	ANSWER 1 OF 3	COPYRIGHT 1996 ACS
RN		583-53-9 LREGISTRY

L1	ANSWER 2 OF 3	COPYRIGHT 1996 ACS
RN		108-36-1 LREGISTRY

L1	ANSWER 3 OF 3	COPYRIGHT 1996 ACS
RN		106-37-6 LREGISTRY

**=> FILE REGISTRY**

**=> E C6H4BR2/MF**

E1	1	C6H4BO8.TL/MF
E2	11	C6H4BR/MF
E3	27	—> C6H4BR2/MF
E4	1	C6H4BR2.(C2H4O)NH2O/MF
E5	1	C6H4BR2.1/3(C2H4O)NH2O/MF
E6	1	C6H4BR2.C6H4CL2/MF
E7	2	C6H4BR2.C6N4/MF
E8	3	C6H4BR2.I2/MF
E9	2	C6H4BR2.X(C2H4O)NH2O/MF
E10	1	C6H4BR2.XC6N4/MF
E11	1	C6H4BR2CA/MF
E12	1	C6H4BR2CDN2S/MF

=> S E3

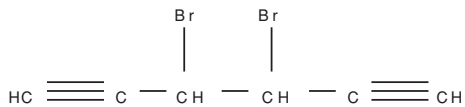
L2 27 C6H4BR2/MF

=> D SCAN

L2 27 ANSWERS REGISTRY COPYRIGHT 1996 ACS

IN 1,5-Hexadiyne, 3,4-dibromo- (7Cl)

MF \*\*\*C6 H4 Br2\*\*\*



HOW MANY MORE ANSWERS DO YOU WISH TO SCAN? (1):0

=> S L2 AND DIBROMO (L) BENZENE

98927 DIBROMO

966026 BENZENE

8824 DIBROMO (L) BENZENE

L3 15 L2 AND DIBROMO (L) BENZENE

=> D RN IN 1-15

L3 ANSWER 1 OF 15 REGISTRY COPYRIGHT 1996 ACS

RN 157228-12-1 REGISTRY IN

\*\*\*Benzene-1,3-d2, 4,6-dibromo- (9Cl)\*\*\*

L3 ANSWER 2 OF 15 REGISTRY COPYRIGHT 1996 ACS

RN 119260-25-2 REGISTRY IN

\*\*\*Benzene, 1,2-dibromo-, labeled with carbon-14 (9Cl)\*\*\*

L3 ANSWER 3 OF 15 REGISTRY COPYRIGHT 1996 ACS

RN 99266-81-6 REGISTRY IN

\*\*\*Benzene, 1,3-dibromo-, radical ion(1-) (9Cl)\*\*\*

L3 ANSWER 4 OF 15 REGISTRY COPYRIGHT 1996 ACS

RN 99266-80-5 REGISTRY IN

\*\*\*Benzene, 1,2-dibromo-, radical ion(1-) (9Cl)\*\*\*

L3 ANSWER 5 OF 15 REGISTRY COPYRIGHT 1996 ACS

RN 74365-38-1 REGISTRY IN

\*\*\*Benzene, 1,4-dibromo-, radical ion(1+) (9Cl)\*\*\*

L3 ANSWER 6 OF 15 REGISTRY COPYRIGHT 1996 ACS

RN 74350-74-6 REGISTRY IN

\*\*\*Benzene, 1,2-dibromo-, radical ion(1+) (9Cl)\*\*\*

L3 ANSWER 7 OF 15 REGISTRY COPYRIGHT 1996 ACS

RN 74336-44-0 REGISTRY IN

\*\*\*Benzene, 1,3-dibromo-, radical ion(1+) (9Cl)\*\*\*

L3 ANSWER 8 OF 15 REGISTRY COPYRIGHT 1996 ACS

RN 55232-44-5 REGISTRY IN

\*\*\*Benzene, 1,4-dibromo-, radical ion(1-) (9Cl)\*\*\*

L3 ANSWER 9 OF 15 REGISTRY COPYRIGHT 1996 ACS

RN 37960-82-0 REGISTRY IN

\*\*\*Benzene-d, 3,5-dibromo- (9Cl)\*\*\*

L3 ANSWER 10 OF 15 REGISTRY COPYRIGHT 1996 ACS

RN 26249-12-7 REGISTRY IN

\*\*\*Benzene, dibromo- (8Cl, 9Cl)\*\*\*

L3 ANSWER 11 OF 15 REGISTRY COPYRIGHT 1996 ACS  
 RN 19936-78-8 REGISTRY IN  
 \*\*\*Benzene-1,4-dibromo- (8Cl)\*\*\*

L3 ANSWER 12 OF 15 REGISTRY COPYRIGHT 1996 ACS  
 RN 4165-56-4 REGISTRY IN  
 \*\*\*Benzene-1,2,4,5-d4, 3,6-dibromo- (8Cl, 9Cl)\*\*\*

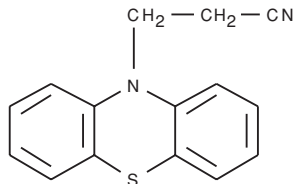
L3 ANSWER 13 OF 15 REGISTRY COPYRIGHT 1996 ACS  
 RN 583-53-9 REGISTRY IN  
 \*\*\*Benzene, 1,2-dibromo- (9Cl)\*\*\*

L3 ANSWER 14 OF 15 REGISTRY COPYRIGHT 1996 ACS  
 RN 108-36-1 REGISTRY IN  
 \*\*\*Benzene, 1,3-dibromo- (9Cl)\*\*\*

L3 ANSWER 15 OF 15 REGISTRY COPYRIGHT 1996 ACS  
 RN 106-37-6 REGISTRY IN  
 \*\*\*Benzene, 1,4-dibromo- (9Cl)\*\*\*

## Lesson 4

6. Find the CAS Registry Number for the compound with the following structure:



=> FILE LREG

=> E C15H12N2S/MF

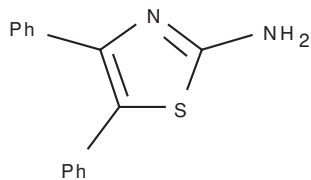
E1	6	C15H12N2OS/MF
E2	2	C15H12N2OS2/MF
E3	2	—> C15H12N2S/MF
E4	2	C15H12N3O7S/MF
E5	2	C15H12N4/MF
E6	2	C15H12N4O/MF
E7	1	C15H12N4O10/MF
E8	6	C15H12N4O2/MF
E9	6	C15H12N4O2S/MF
E10	1	C15H12N4O3/MF
E11	2	C15H12N4O4/MF
E12	1	C15H12N4O5/MF

=> S E3

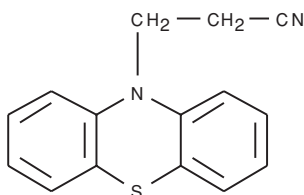
L1	2	C15H12N2S/MF
----	---	--------------

**=> D RN STR 1-2**

L1 ANSWER 1 OF 2 COPYRIGHT 1996 ACS  
RN 6318-74-7 LREGISTRY



L1 ANSWER 2 OF 2 COPYRIGHT 1996 ACS  
RN 1698-80-2 LREGISTRY



**=> FILE REGISTRY**

**=> E C15H12N2S/MF**

E1	1	C15H12N2RH/MF
E2	1	C15H12N2RH.CLO4/MF
E3	235	→ C15H12N2S/MF
E4	1	C15H12N2S.1/2PB/MF
E5	1	C15H12N2S.2C6H3N3O7/MF
E6	3	C15H12N2S.2CLH/MF
E7	1	C15H12N2S.AG/MF
E8	12	C15H12N2S.BRH/MF
E9	1	C15H12N2S.C2H2O4/MF
E10	1	C15H12N2S.C3H5N3O2/MF
E11	5	C15H12N2S.C6H3N3O7/MF
E12	2	C15H12N2S.C7H8O3S/MF

**=> S E3**

L2 235 C15H12N2S/MF

**=> S L2 AND (NITRILE OR CYANO)**

308303 NITRILE

229146 CYANO

L3 34 L2 AND (NITRILE OR CYANO)

**=> S L3 AND PHENOTHIAZ?**

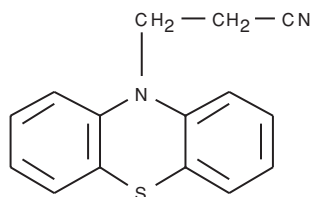
23741 PHENOTHIAZ?

L4 5 L3 AND PHENOTHIAZ?

**=> D RN CN STR 1-5**

•  
•  
•

L4 ANSWER 5 OF 5 REGISTRY COPYRIGHT 1996 ACS  
 RN 1698-80-2 REGISTRY  
 CN \*\*\*10H-Phenothiazine-10-propanenitrile (9CI)\*\*\* (CA INDEX NAME)  
 OTHER CA INDEX NAMES:  
 CN \*\*\*Phenothiazine-10-propionitrile (6CI, 7CI, 8CI)\*\*\*  
 OTHER NAMES:  
 CN \*\*\*10-(2-Cyanoethyl)phenothiazine\*\*\*



## Lesson 6

### 7. What is the CAS Registry Number for the mixture of Captan and PCNB?

=> FILE LREG

=> E CAPTAN/CN

E1	1	CAPTAFOL-FOLPET MIXTURE/CN
E2	1	CAPTAMINE HYDROCHLORIDE/CN
E3	1	→ CAPTAN/CN
E4	1	CAPTAN 50W/CN
E5	1	CAPTAN-IMIDAN MIXT./CN
E6	1	CAPTAN-PCNB MIXT./CN
E7	1	CAPTAN-PCNB MIXTURE/CN
E8	1	CAPTAX/CN
E9	1	CAPTEX/CN
E10	1	CAPTEX 8000/CN
E11	1	CAPTOP/CN
E12	1	CAPTOPRIL/CN

=> S E3

L2	1	CAPTAN/CN
----	---	-----------

=> D RN

L2 ANSWER 1 OF 1 COPYRIGHT 1996 ACS  
 RN 133-06-2 LREGISTRY

=> E PCNB/CN

E1	1	PCN 1709/CN
E2	1	PCN 4/CN
E3	1	→ PCNB/CN
E4	1	PCNB-CAPTAN MIXT./CN
E5	1	PCNB-ETMT-L 21/CN
E6	1	PCNB-TERRAZOLE MIXT./CN
E7	1	PCNM/CN
E8	1	PCNU/CN
E9	1	PCOC/CN
E10	1	PCON/CN
E11	1	PCONA/CN
E12	2	PCP/CN

=> S E3

L3 1 PCNB/CN

=> D RN

L3 ANSWER 1 OF 1 COPYRIGHT 1996 ACS  
RN 82-68-8 LREGISTRY

=> S 133-06-2/CRN AND 82-68-8/CRN

7 133-06-2/CRN  
2 82-68-8/CRN  
L4 1 133-06-2/CRN AND 82-68-8/CRN

=> D RN CN MF

L4 ANSWER 1 OF 1 COPYRIGHT 1996 ACS  
RN 8003-20-1 LREGISTRY CN 1H-Isoindole-1,3(2H)-dione, 3a,4,7,7a-tetrahydro-2-  
[(trichloromethyl)thio]-, mixt. with pentachloronitrobenzene (9CI)  
(CA INDEX NAME)

OTHER CA INDEX NAMES:

CN Benzene, pentachloronitro-, mixt. contg. (9CI)  
CN Orthocide soil treater X (8CI) OTHER NAMES:  
CN Captan-PCNB mixt.  
CN Captan-PCNB mixture  
CN PCNB-captan mixt.  
MF C9 H8 Cl3 N O2 S . C6 Cl5 N O2

## Lesson 6

### 8. Find any mixtures or salts of ibuprofen.

=> FILE LREG

=> S IBUPROFEN/CN

L1 1 IBUPROFEN/CN

=> D RN

L1 ANSWER 1 OF 1 COPYRIGHT 1996 ACS  
RN 15687-27-1 LREGISTRY

=> S 15687-27-1/CRN

L2 1 15687-27-1/CRN

=> D RN CN MF

L2 ANSWER 1 OF 1 COPYRIGHT 1996 ACS  
RN 31121-93-4 LREGISTRY CN Benzeneacetic acid, .alpha.-methyl-4-  
(2-methylpropyl)-, sodium salt  
(9CI) (CA INDEX NAME)

OTHER CA INDEX NAMES:

CN Hydratropic acid, p-isobutyl-, sodium salt (8CI)  
OTHER NAMES: CN 2-(4-Isobutylphenyl)propionic acid sodium salt  
CN Ibuprofen sodium  
CN Ibuprofen sodium salt  
CN Sodium 2-(4-isobutylphenyl)propionate  
CN Sodium ibuprofen  
MF C13 H18 O2 . Na

**=> FILE REGISTRY**

**=> E 15687-27-1/CRN**

E1 2 15687-22-6/CRN  
E2 4 15687-23-7/CRN  
E3 148 —> 15687-27-1/CRN  
E4 1 15687-33-9/CRN  
E5 1 15687-37-3/CRN  
E6 2 15687-41-9/CRN  
E7 4 156871-41-9/CRN  
E8 4 156871-83-9/CRN  
E9 3 156871-89-5/CRN  
E10 2 156871-90-8/CRN  
E11 1 156872-01-4/CRN  
E12 1 156872-58-1/CRN

**=> S E3**

L3 148 15687-27-1/CRN

**=> D SCAN IN**

L3 148 ANSWERS REGISTRY COPYRIGHT 1996 ACS  
IN Benzeneacetic acid, .alpha.-methyl-4-(2-methylpropyl)-, mixt. with  
2-(diphenylmethoxy)-N,N-dimethylethanamine and 5-methoxy-2-[[[4-  
methoxy-3,5-dimethyl-2-pyridinyl)methyl]sulfinyl]-1H-benzimidazole  
(9CI)

HOW MANY MORE ANSWERS DO YOU WISH TO SCAN? (1):2

L3 148 ANSWERS REGISTRY COPYRIGHT 1996 ACS  
IN Benzeneacetic acid, .alpha.-methyl-4-(2-methylpropyl)-, mixt. with  
[2R\*(4R\*,8R\*)]-(.+.-)-3,4-dihydro-2,5,7,8-tetramethyl-2-(4,8,12-  
trimethyltridecyl)-2H-1-benzopyran-6-yl acetate (9CI)  
L3 148 ANSWERS REGISTRY COPYRIGHT 1996 ACS  
IN Morphinan-6-ol, 4,5-epoxy-3-methoxy-17-methyl-, (5.alpha.,6.alpha.)-  
, phosphate (1:1) (salt), mixt. with 2-amino-3,5-dibromo-N-  
cyclohexyl-N-methylbenzenemethanamine monohydrochloride,  
[S-(R\*,S\*)]-6,7-dimethoxy-3-(5,6,7,8-tetrahydro-4-methoxy-6-methyl-  
1,3-dioxolo[4,5-g]isoquinolin-5-yl)-1(3H)-isobenzofuranone,  
(R\*,S\*)-.alpha.-[1-(dimethylamino)ethyl]benzenemethanol  
hydrochloride and .alpha.-methyl-4-(2-methylpropyl)benzeneacetic  
acid (9CI)

HOW MANY MORE ANSWERS DO YOU WISH TO SCAN? (1):0

## Lesson 7

### 9. Find any mixtures or salts of naproxen or any of its stereoisomers.

=> FILE LREG

=> E NAPROXEN/CN

E1 1 NAPROSYN/CN  
E2 1 NAPROSYN SODIUM/CN  
E3 1 → NAPROXEN/CN  
E4 1 NAPROXEN ESTERASE/CN  
E5 1 NAPROXEN SODIUM/CN  
E6 1 NAPRYL/CN  
E7 1 NAPRYL 51351AG/CN  
E8 1 NAPRYL 61200AG/CN  
E9 1 NAPRYL 62040AP/CN  
E10 1 NAPRYL 62041AG/CN  
E11 1 NAPRYL 6204I/CN  
E12 1 NAPRYL 62130AG/CN

=> S E3

L1 1 NAPROXEN/CN

=> D IN MF

L1 ANSWER 1 OF 1 COPYRIGHT 1996 ACS  
IN 2-Naphthaleneacetic acid, 6-methoxy-.alpha.-methyl-, (S)- (9CI)  
MF C14 H14 O3

=> S 2-NAPHTHALENEACETIC ACID (L) 6-METHOXY (L) ALPHA (L) METHYL AND C14H14O3

74672 2  
30 NAPHTHALENEACETIC  
31687 ACID  
13 2-NAPHTHALENEACETIC ACID  
(2(W)NAPHTHALENEACETIC(W)ACID)  
26440 6  
12370 METHOXY  
659 6-METHOXY  
(6(W)METHOXY)  
14946 ALPHA  
60948 METHYL  
4 2-NAPHTHALENEACETIC ACID (L) 6-METHOXY (L) ALPHA (L) METHYL  
19 C14H14O3  
L2 4 2-NAPHTHALENEACETIC ACID (L) 6-METHOXY (L) ALPHA (L) METHYL  
AND C14H14O3

=> D SCAN IN MF

L2 4 ANSWERS COPYRIGHT 1996 ACS  
IN \*\*\*2-Naphthaleneacetic acid, 6-methoxy-.alpha.-methyl-, sodium  
salt, (R)- (8CI, 9CI)\*\*\*  
MF \*\*\*C14 H14 O3 . Na\*\*\*

HOW MANY MORE ANSWERS DO YOU WISH TO SCAN? (1):3

L2 4 ANSWERS COPYRIGHT 1996 ACS  
IN \*\*\*2-Naphthaleneacetic acid, 6-methoxy-.alpha.-methyl-, (S)-  
(9CI)\*\*\*  
MF \*\*\*C14 H14 O3\*\*\*

L2 4 ANSWERS COPYRIGHT 1996 ACS  
IN \*\*\*2-Naphthaleneacetic acid, 6-methoxy-.alpha.-methyl- (8CI,  
9CI)\*\*\*  
MF \*\*\*C14 H14 O3\*\*\*

L2 4 ANSWERS COPYRIGHT 1996 ACS  
IN \*\*\*2-Naphthaleneacetic acid, 6-methoxy-.alpha.-methyl-, sodium  
salt, (S)- (9CI)\*\*\*  
MF \*\*\*C14 H14 O3 . Na\*\*\*

**=> FILE REGISTRY**

**=> S L2**

9221759 2  
7010 NAPHTHALENEACETIC  
3792579 ACID  
3762 2-NAPHTHALENEACETIC ACID  
(2(W)NAPHTHALENEACETIC(W)ACID)  
3503585 6  
1711220 METHOXY  
80818 6-METHOXY  
(6(W)METHOXY)  
1737133 ALPHA  
7507960 METHYL  
765 2-NAPHTHALENEACETIC ACID (L) 6-METHOXY (L) ALPHA (L) METHYL  
1883 C14H14O3  
L3 211 2-NAPHTHALENEACETIC ACID (L) 6-METHOXY (L) ALPHA (L) METHYL  
AND C14H14O3

**=> D SCAN IN**

L3 211 ANSWERS REGISTRY COPYRIGHT 1996 ACS  
IN \*\*\*.beta.-Cyclodextrin, compd. with (S)-6-methoxy-.alpha.-methyl-2-  
naphthaleneacetic acid (1:1) (9CI)\*\*\*

HOW MANY MORE ANSWERS DO YOU WISH TO SCAN? (1):2

L3 211 ANSWERS REGISTRY COPYRIGHT 1996 ACS  
IN D-Glucitol, 1-deoxy-1-(hexylamino)-, (S)-6-methoxy-.alpha.-methyl-2-  
naphthaleneacetate (salt) (9CI)

L3 211 ANSWERS REGISTRY COPYRIGHT 1996 ACS  
IN \*\*\*2-Naphthaleneacetic acid, 6-methoxy-.alpha.-methyl-, (R)-,  
compd. with 1,2,3,4,4a,9,10,10a-octahydro-1,4a-dimethyl-7-(1-  
methylethyl)-1-phenanthrenemethanamine (1:1) (9CI)\*\*\*

HOW MANY MORE ANSWERS DO YOU WISH TO SCAN? (1):0

**=> S L2 AND (MXS/CI OR SALT)**

9221759 2  
7010 NAPHTHALENEACETIC  
3792579 ACID  
3762 2-NAPHTHALENEACETIC ACID  
(2(W)NAPHTHALENEACETIC(W)ACID)  
3503585 6  
1711220 METHOXY  
80818 6-METHOXY  
(6(W)METHOXY)  
1737133 ALPHA  
7507960 METHYL  
765 2-NAPHTHALENEACETIC ACID (L) 6-METHOXY (L) ALPHA (L) METHYL  
1883 C14H14O3  
50381 MXS/CI  
482329 SALT  
L4 123 L2 AND (MXS/CI OR SALT)



*CAS is a division of the  
American Chemical Society.®*

CAS9278-0396