

CA on CD™

Installation Instructions

Updated January 2007

If you have questions or difficulties while following these instructions, please contact:

CAS Customer Care

Phone:	800-753-4227	(North America)
	614-447-3700	(worldwide)
Fax:	614-447-3751	
E-mail:	help@cas.org	

In Japan

JAICI	
Phone:	+81-3-5978-3601
Fax:	+81-3-5978-3600
E-mail:	helpdesk@jaici.or.jp

The use of specific software or hardware product names does not constitute an endorsement of those products by CAS. Neither does the use of any non-CAS product name constitute a guarantee of compatibility of such product with CA on CD.

Table of Contents

I. Overview	4
II. Installation Options	5
Multiple User Installation	5
Single User Installation	5
III. Installation Restrictions/Issues	6
General	6
Windows	6
Macintosh	6
IV. Hardware Requirements	7
Windows Multiple User	7
Macintosh Multiple User	7
Windows Single User	7
V. Procedures for New Installation	8
Windows Multiple User	8
Macintosh Multiple User	9
Windows Single User	11
VI. Updating Procedures	12
Windows	12
Macintosh OS X – 10.2.x Jaguar, 10.3.x Panther, and 10.4.x Tiger Database	12
Macintosh OS X – 10.2.x Jaguar, 10.3.x Panther, and 10.4.x Tiger Software	12
Updating Existing Databases for Access from OS X Clients	13
Installing Back Issue Databases	13
Reinstalling or Repairing an Existing Installation	14
VII. Installing HASP Device Drivers on Windows Client Workstations	15
VIII. Uninstall Procedures	16
Windows	16
Macintosh	17

Appendix A: Sample Installations with Screen Captures	18
Windows	18
Appendix B: Windows Back Issue Installer/Uninstaller	32
How to Add an Older Database	32
How to Remove an Older Database	35
Canceling the Operation or if an Error Occurs	36
Appendix C: License Server, License Manager, NetHASP Monitor, and Usage Program	38
Selecting the License Server	38
What is a License Manager and How Does it Work?	38
Temporarily Stopping the Windows NetHASP License Manager	38
Configuring Access to the NetHASP License Manager	38
Running the NetHASP Monitor	39
Usage Program	39

I. Overview

CA on CD data in the form of a database spanning the current year is distributed on a monthly schedule and is accessible from separate CA on CD applications running on Windows® and Macintosh® OS X. The database can be installed on any of these platforms as well as to a Windows and/or Mac Share Volume on a file server.

Installations are server/client network systems that can be exclusively Windows, exclusively OS X, or mixed platform systems (single user installations are available for Windows only). Mixed platform installations require server and client installations for each different platform.

Authorization of access to the data is controlled using License Manager software and a USB security key on Windows and accessible from all platforms.

Once the server/client and license manager software is installed and up to date, the role of the monthly installer is to update the database only.

The Windows Master Installer will detect and determine the status of an installation and guide the user through the recommended installation process, automatically prompting for update of software and/or License Manager and device drivers as necessary.

CA on CD software for Macintosh OS X is 'installed' using drag and drop. Users will be alerted when this should be updated.

II. Installation Options

The major components and installation options are discussed below.

Multiple User Installation

- Across all platforms there are a number of possible machine roles:
- **Database File Server** – the machine where database files are located. Database files must be copied to the hard drive on this server which may be any computer that can share Windows and/or Macintosh volumes.
- **Windows Software File Server** – the machine where the Windows shared software installation directory is located.
- **Windows Client Workstation** – one or more of the Windows machines where the CA on CD application software runs.
- **Macintosh OS X Software File Server** – the machine where the Macintosh shared software installation directory is located.
- **Macintosh Client Workstation** – one or more Macintosh OS X machines where the CA on CD application software runs.
- **License Server** – the Windows machine where the HASP HL Net[®] USB hardware key is attached. The NetHASP License Manager program also runs on this machine.

Important: for Windows only installations CAS **strongly recommends combining** the roles of Windows Database and Software File Server with Windows License Server on a single machine.

A mixed platform installation can be created in which a number of Windows and Macintosh OS X Clients exist on the same network, accessing Windows and Macintosh OS X Software File Server folders, databases and license manager which are all located on one file server with Windows and Mac share capability.

Note: Novell Netware and **Windows NT 4.0** Servers are no longer supported as License Managers though these machines can still be used as Database/Software file servers.

Refer to all directories during the Windows installation process via UNC names.

The CA on CD application accesses data files via file sharing.

The CA on CD application accesses the NetHASP License Manager via network client/server interactions. The Windows NetHASP License Manager understands and listens to multiple protocols.

By default, communication with the NetHASP License Manager is via broadcast mechanisms. The communication interaction can be tuned so that the NetHASP License Manager is expected to be located at a specific network address. See "Configuring the NetHASP License Manager" in Appendix A.

Single User Installation

In a single user installation on a machine running Windows, all program files and the hard drive where the database files are copied are located on a single machine. The NetHASP hardware key must be attached to the USB port on this single machine.

Macintosh Single User installation is not available.

III. Installation Restrictions/Issues

General

Very Important: If you have previously installed any of the CA on CD Family of Products, then you **must** install this product in the same directory as the previous product(s) – see Section VI for Updating Procedures.

If using a local Windows firewall open port 475 using UDP to allow CA on CD to communicate with the HASP key.

Leaving database files on the CD is no longer supported.

Windows

Very Important: When either reinstalling or installing for the first time an **older** CA on CD Archival or Collective Index product onto a Software File Server with the latest CA on CD already installed you **must** use **your latest Master Installer**. The Windows Master Installer will ensure that your software, license manager, and current database are up to date before displaying the 'Run Back Issue Installer' option (see Appendix B).

Important: The Windows hardware platform must be 100% Intel® compatible.

Important: If the License Server machine is using the TCP/IP and UDP protocol, then its DNS name **must** match the computer name found in the Network Control Panel.

Important: Single User and Multiple User installations **must** not be executed on the same machine.

Important: HASP device drivers must be installed on all client workstations. CA on CD will not function unless this software is installed on each client PC – See Section VII

In some non-English Windows systems, the first execution of the CA on CD application will display unintelligible characters. This can be corrected by selecting a default display font. In the Index Browse window, select the Text menu, then Font, and then make a font selection. This problem occurs because the system font does not use the same character mapping as the U.S. version of Windows and the installer does not make any assumptions about which fonts are installed in a particular system.

UNC names are supported and encouraged for all shared database and program files if all Client Workstations have suitable network client software installed. If ANY Client Workstation does not support UNC names, then mapped drive letters must be used. This means that the SAME set of mapped drive letters must be used for ALL Client Workstations.

Communications with the License Server may be unreliable if the NetHASP License Manager is running on a very slow (or busy) machine relative to the Client Workstations machines.

Macintosh

For the CA on CD OS X software to run the Macintosh Client machine must be G3 or later computer running OS X Jaguar (10.2.x), Panther (10.3.x) or Tiger (10.4.x) operating systems.

In order for the multiple user implementations to function, all the Macintosh machines must be running on a network that supports the TCP/IP and UDP protocols.

Network routers that are located between the License Server and Client Workstations must allow the TCP/IP and UDP protocols to pass through the network.

Macintosh OS X clients must access a Macintosh OS X Software File Server.

IV. Hardware Requirements

The following configurations are minimums. Better performance can be expected with the installation of additional memory.

See <http://www.cas.org/ONLINE/CD/cdreqs.pdf> for further details.

Windows Multiple User

UNC names are supported for all shared database and program files if all Client Workstations have suitable network client software installed. If ANY Client Workstation does not support UNC names, then mapped drive letters must be used. This means that the SAME set of mapped drive letters must be used for ALL Client Workstations.

Database/Software File Server: May be any File Server with Windows file support plus 8 GB hard drive space for copying the database files to hard drive. If the File Server is not a Windows PC there must be a Windows PC available with one CD-ROM drive for installation. Consult your server's documentation or vendor for server memory requirements.

Windows License Server: Typically, this Windows machine is the same machine as the Database/Software File Server. (**Note:** NT 4.0 and Netware operating systems are not supported.) CAS recommends this combined configuration. Alternatively, the License Server can be a separate machine. Under either configuration, this machine must support the TCP/IP/UDP network communication protocol and 11 MB of available hard drive space.

Client Workstations: 1 MB of available local hard drive space. Network interface and software supporting file sharing with the File Server. The TCP/IP/UDP protocol must be installed on the Client Workstations to provide communication to the License Server. The hardware platform must be 100% Intel compatible. (**Note:** NT 4.0 operating system is not supported).

Macintosh Multiple User

Database File Server: May be any file server with Macintosh support installed with one CD-ROM drive for installation plus hard drive space (8 GB) for copying the database files to the hard drive. Consult your server's documentation or vendor for server memory requirements. An interface to the TCP/IP/UDP network is also required.

OS X Software File Server: May be the same machine as the Database File Server with 8 MB of available local hard drive space.

OS X Client Workstations: Macintosh G3 or later computer running Jaguar 10.2.x, Panther 10.3.x or Tiger 10.4.x operating system, 128 MB RAM, 1 MB local hard drive space and Ethernet connection to the File Server.

Windows Single User

Local CD-ROM drive for installation plus 32 MB of local hard drive plus 8 GB local hard drive space for copying the database files to the hard drive. Hardware platform must be 100% Intel compatible.

V. Procedures for New Installation

The installer interfaces are designed to be easy to use and therefore self-explanatory. However, some Operating Systems require additional or special instructions. These are included in the appropriate sections below.

Very Important: If you have previously installed any of the CA on CD Family of Products, then you **must** install this product in the same shared software directory using Update Procedures described in Section VI.

If you have an existing Windows installation, the installer will detect this and prompt for upgrade of software, license manager and/or database as appropriate.

If your existing Windows installation is already up to date, options for reinstalling software and installing back issue databases are provided – see Appendix B.

Windows Multiple User

The Windows Multiple User (network) installation involves four phases, server installation, database installation, license manager installation, and then multiple client installations.

Before installation, the Network Administrator needs to identify the following:

- Network name and Operating System of the Database/Software File Server machine(s) where CA on CD will be installed. (**Note:** May be the same or different machines.)
- Name of the shared software folder on the Software File Server machine where the CA on CD application program will be installed.
- Network name and Operating System of the License Server machine where the NetHASP License Manager and NetHASP hardware key will be installed.
- Share name of the folder on the Database File Server where the CA on CD database files will reside.
- All Client Workstations and the machine (License Server) where the NetHASP License Manager is running must have a common network protocol installed.

Important: For best installation results, all references to folders and paths should be specified with UNC names during installation. (**Note:** The drives and folders that you will be writing to must be shared on the network BEFORE you can specify a UNC name otherwise they will be invalid during installation.) If you choose to use UNC names for the server installation, then you will need to use UNC names for all the client installations. Likewise, if you use mapped drive letters for the server installation, then you must use mapped drive letters for all the client installations. If any client installation requires mapped drive letters, then the server installation and all the client installations must use the **SAME SET** of mapped drive letters.

Windows NT 4.0/2000/XP/Server 2003 and Netware Database/Software File Server

You must be logged on to the File Server with administrator permissions.

1. Insert CA on CD disc1 into the CD-ROM drive (if installing to NetWare Server use the CD-ROM drive on the Windows NetWare Client machine). You will be prompted to insert the remaining discs during installation.
2. Logon to the File Server as an administrator with write access to all folders.
3. Click Start|Run and then type the UNC name that references SETUP.EXE on disc1 in the Open box. For example, \\servername\disc1\setup.exe, where disc1 is the share name for the first CD-ROM disc. Click **OK**.
4. Respond appropriately to the installation screens. The Master installer will guide you through the installation of software and monthly database. For a hardcopy example with screen captures, see section VII.

5. The installer will provide the option to install the Windows license manager (supported on Windows 2000/XP and Server 2003). CAS recommends you install the license manager on the Windows Software File Server – see Section V.8.
6. If the license manager has been installed on the Windows Software File Server, restart the server and insert the HASP HL key into a USB port. HASP key device drivers will be installed automatically.

Windows 2000/XP Client

It is assumed that the server installation phase has been completed. If not, please go to the appropriate section and complete the server installation phase.

If you chose to use UNC names for the server installation, then you will need to use UNC names for all the client installations.

If any client installation requires mapped drive letters, then the server installation and all the client installations must use the *SAME SET* of mapped drive letters.

1. For each Client - click Start|Run and type the UNC name that references NETUSER.EXE in the shared software folder on the File Server in the Open box. For example, \\servername\sharename\programfolder\netuser.exe. Click OK.
2. Respond appropriately to the installation screens. For a hardcopy example with screen captures, see Appendix A.

Note: HASP device drivers must be installed on all client workstations. CA on CD will not function unless this software is installed on each client PC – see Section VII page 15.

Running CA on CD

1. Ensure License Manager is running and HASP HL key is inserted on License Server.
2. On the Client machine, click Start|Programs|CA on CD|CA on CD.
3. Select the appropriate database and click Open.

Macintosh Multiple User

The Macintosh Multiple User (network) installation involves four phases, a Macintosh File Server installation, multiple client installations, installation of a (Windows) license manager, and installation/configuration of the database.

Very Important: If you have previously installed any of the CA on CD Family of Products, then you **must** install this product in the same shared software directory, using Update Procedures described in Section VI.

Important: Separate server/client installations must be carried out for OS X platforms.

Note: For mixed platform installations, the Macintosh server software can be installed to a Mac share volume on a Windows Server.

Macintosh OS X Software File Server Installation

Must be Macintosh G3 or higher running 10.2.x Jaguar, 10.3.x Panther, or 10.4.x Tiger operating systems and with administrator permissions.

1. Logon to the Server as administrator with write access to all folders.
2. Insert CA on CD disc1 into the CD-ROM drive.
3. Open the disc and drag the **CAonCD OS X Folder** from the CD to the **Public Folder** of the OS X Server.

Macintosh OS X Client Installation

Must be Macintosh G3 or higher running 10.2.x Jaguar, 10.3.x Panther or 10.4.x Tiger operating systems.

Note: If CA on CD is to be used by multiple User accounts on the same client machine, Steps 1 and 2 below must be repeated for each User account.

1. Connect to the OS X Software File Server from the Finder Go menu either as a Guest or Registered User.
2. Select the appropriate shared volume, e.g., Admin and mount on the client desktop. This contains the CA on CD OS X Folder.

For a hardcopy example with screen captures, see Appendix A.

License Manager Installation

Access to databases is controlled by the HASP HL key which is a cross-platform device that operates with the Windows License Manager and can be accessed from Windows or OS X CA on CD applications.

The License Manager may be installed on a separate Windows server and is independent of the Macintosh Software File Server installations.

The License Server must be on the same network as the Windows or Macintosh OS X Software File Servers, Database Server, and Clients.

Windows License Server

Must be Windows XP, 2000, or 2003 Server with administrator permissions. (**Note:** NT4 and Netware License Servers no longer supported).

1. Logon to the License Server as an administrator with write access to all folders.
2. Insert CA on CD disc1 into the CD-ROM drive.
3. Click Start|Run and then type `x:\setup.exe`, with *x* being the drive letter of the CD-ROM drive. Click **OK**.
4. Respond appropriately to the installation screens and reboot the server when prompted.
5. Insert the HASP HL key into a USB port of the License Server. Appropriate drivers will automatically be installed and the LED light will indicate that the key is operational.

For a hardcopy example with screen captures, see Appendix A on page 18.

OS X Database File Server Installation

Following completion of the CA on CD installation, you may, if your organization has signed the necessary License Agreement, copy the database files from the CD-ROM discs to a local hard drive on the File Server. This requires approximately 680 MB of free disk space per CD-ROM in the set.

The database can be accessed from the OS X application having been copied to a shared directory on a Windows server or a Macintosh server on the same network.

See Section V.1 for database installation using Windows installer.

1. Insert and open CD-ROM disc1.
2. Create a new folder for the database (e.g., Ca2007.db) on the hard drive of the Macintosh File Server and drag all *.lc, *.nor, *.db, *.dsc files from CD#1 to that database folder.
3. Drag and drop the database files ending in “.db” from each of the remaining CDs in the set into the same folder (e.g., Ca2007.db) on the hard drive.

Configuring Database Access

OS X Database Access

The Macintosh CA on CD OS X software stores information about the location of the database folder when the user navigates and chooses that folder after running CA on CD OS X and opening the database for the first time. Once the folder location is stored, the database will open automatically in the future as long as the database folder volume is mounted on the Client Desktop.

The user may reset the database location by holding down the Option key while and or opening the database.

Running CA on CD

1. Ensure License Manager is running and HASP HL key is inserted on License Server.
2. Connect to the Database File Server and mount the database share volume on the OS X Client Desktop.
3. Connect to the OS X Software File Server and mount the server share volume on the OS X Client Desktop.
4. Double click the icon to open and double click the CA on CD OS X folder.
5. Double click the CA on CD OS X program icon.
6. Select the appropriate database and click **Open**.
7. If prompted, navigate to and choose the appropriate folder containing the database and click **Choose Folder**.

Windows Single User

Very Important: If you have previously installed any of the CA on CD Family of Products, then you **must** install this product in the same software directory (default is C:\CACD) using Update Procedures described in Section VI on the next page.

Single User installation is available for Windows only and involves installing the database and the application software on a single Workstation with administrator permission. For a hardcopy example with screen captures, see Section VII on page 15.

Windows 2000/XP

- a. Insert disc1 into a local CD-ROM drive. You will be prompted to insert the remaining discs during installation.
- b. Click Start|Run and then type x:\setup in the Open box, where x is the letter of the CD-ROM drive that contains disc1.
- c. Respond appropriately to the installation screens.
- d. To start CA on CD, click Start|Programs|CA on CD|CA on CD.
- e. Select the appropriate database and click **Open**.

For a hardcopy example with screen captures, see Appendix A on page 18.

VI. Updating Procedures

Windows

The Windows Master Installer will detect an existing Server or Single User and License Manager installation and determine the operating system used.

To begin the update:

1. Insert CD disc1.
2. Start|Run SETUP.EXE.
3. Follow screen prompts.

The Master Installer determines whether the software, monthly database, or License Manager needs updating and will prompt you to complete upgrades in sequence starting with software, then monthly database, returning to the Master Installer and displaying the revised status of the installation.

If a License Manager upgrade is then necessary, the installer will display the installation status prior to reboot.

For a hardcopy example with screen captures, see Appendix A on page 18.

Important – Before Updating License Manager or Single User software ensure that HASP HL key is removed. Reinsert after reinstallation.

Note – it is not normally necessary to update clients – users will be alerted when this is required.

Macintosh OS X – 10.2.x Jaguar, 10.3.x Panther and 10.4.x Tiger Database

Usually only necessary if database is installed on Mac OS X Database File Server.

1. Insert CD into Macintosh OS X Database File Server.
2. Click on the CD icon to open.
3. Drag and drop all *.256, *.lc, *.nor, *.db, *.dsc files from CD #1 into the same directory (e.g., Ca2007.db) on the Macintosh Server hard drive as prior installation, replacing existing files when prompted.
4. Copy *.db files from all other CD's in the set to the same db folder replacing existing files if/when prompted.

Macintosh OS X – 10.2.x Jaguar, 10.3.x Panther and 10.4.x Tiger Software

Users will be alerted when OS X Software requires updating. In this case:

1. Insert CD into Macintosh OS X Software File Server.
2. Click on the CD icon to open.
3. Drag and drop the CA on CD OS X Folder from the CD to the folder containing the existing CA on CD OS X Folder (e.g., Public Folder, Applications Folder).
4. Replace existing files when prompted.
5. Ensure all OS X Clients reconnect to the OS X Software File Server and remount the Server volume.

Updating Existing Databases for Access from OS X Clients

If you have existing databases copied to hard drive for access by Windows or pre-OS X applications and want to access these from the CA on CD OS X application, you *must* ensure that corresponding support files for each database are copied to the same location as all .db files for that database, e.g., if you currently access Archival 2001 database from Windows and pre-OS X clients:

- Insert disc1 from the Archival 2001 database set of CD's into the Database File Server CD-ROM drive.
- If the Server is a Macintosh machine – copy *.lc, *.dsc, and *.nor files (+ cover and caslogo files) from the CD to the database folder.
- If the Server is a Windows machine – copy *.lc, *.dsc and *.256 files from the CD to the database folder.
- Ensure that all .db files pertaining to the 2001 Archival database set are located in the same single folder for that year, e.g., CA2001db.
- Navigate to and choose this folder when opening this database from CA on CD OS X for the first time.
- Repeat for each existing database.

Note: The OS X application will determine whether lc, dsc, and nor/256 files exist in the correct folder and alert the user if they are not present.

Installing Back Issue Databases

Windows

Must have existing installation

Installer will ensure software installation exists and is up to date

Must use Back Issue Installer

Use Windows Back Issue Installer to install older databases if these are to be used by both Windows and Macintosh OS X applications.

1. Insert disc1 of the most recent monthly (or Software Upgrade) release.
2. Run SETUP.EXE.
3. Click Show Options.
4. Click on Run Back Issue Installer option.
5. Follow the screen prompts.

See Appendix B on page 32 for further details and example screen captures.

Macintosh

Use the following method if the database is to be used by Macintosh applications only:

Drag and drop all *.lc, .dsc, .nor (+ cover and caslogo files) from the appropriate CD set together with all *.db files from each of the CD's in that set to a single folder on the Database File Server hard drive, e.g., CA2007.db.

Reinstalling or Repairing an Existing Installation

Windows

Windows Master Installer provides opportunity to reinstall an existing installation in the event of inadvertent corruption of the software or the database.

1. Insert disc1 of the most recent monthly (or Software Upgrade if not a current subscriber) release.
2. Run SETUP.EXE.
3. Click **Show Options**.
4. Click **Reinstall** option then Continue.
5. Follow the screen prompts.

Important – Before Reinstalling License Manager or Single User software, ensure that the HASP HL key is removed. Reinsert after reinstallation.

Macintosh OS X

Drag and drop the CA on CD OS X Folder from the very latest monthly CD overwriting the existing files.

VII. Installing HASP Device Drivers on Windows Client Workstations

Beginning with CA on CD 2007, all CA on CD clients require additional security software. CA on CD will not function unless this software is installed on each client PC. A warning message will be displayed:



Installation of HASP drivers on Workstations with XP or Windows 2000 operating systems requires administrator privileges. Once drivers are installed, this will not need to be repeated unless drivers are upgraded in future.

After installing/upgrading the CA on CD Server software, logon to each client with administrator privileges if necessary then:

1. From the Client Start Menu, run `\\servername\installdirectory\HASP\HASPdinst.exe -i`
2. Click **OK** when installation complete.

Note: HASPdinst.exe -i can also be run from the HASP directory on CA on CD disc1.

No HASP key is required on the Client Workstation – this should remain on your License Server.

After installation of HASP drivers to Windows 98 or ME Workstations, a reboot will be required.

For networks with large numbers of CA on CD clients, you may wish to consider using your own in-house roll out method.

VIII. Uninstall Procedures

Windows

Complete Client Uninstalls before Server Uninstall.

Client Uninstall

1. Click Start|Programs|CA on CD|Uninstall CA on CD.
2. Click **Yes** on the Confirm File Deletion window to continue.
3. Click **OK** after the Uninstall successfully completed message.

The HASP device drivers will remain on the Client machine after the uninstall program is executed. To remove – insert disc1 and run x:\HASP\HASPdinst.exe –fr

Server Uninstall

The uninstall program must be run on the same machine where the install program was run. You must log on with administrator privileges.

Note: The uninstall program will uninstall ALL databases and program files. To uninstall one or more databases only see **Database Uninstall** on page 17.

1. Ensure that the folder containing database files has Read and Write permissions.
2. Click Start|Programs\CAS NetHASP Utilities|Uninstall CA on CD.
3. Ensure any CAS related applications are exited and click **OK** to confirm
4. Select **Yes** on the Uninstall Databases and Program Files window. Then click **Next**.
5. An Uninstallation Complete window appears. Click **OK** to complete the uninstall.

The following items will remain on the File Server machine after the uninstall program is executed:

- The HASP device driver
- The HASP License Manager
- The installation directory (the shared software directory)
- The HASP subdirectory
- USAGE.LOG in the HASP subdirectory

NetHASP License Manager Uninstall

1. Remove the HASP key.
2. Click the link Start|Programs|NetHASP License Manager|Uninstall NetHASP License Manager.

To uninstall the Hardlock device drivers only

1. Insert disc1
2. Run x:\HASP\HASPdinst.exe –fr

Single User Uninstall

Note: The uninstall program will uninstall ALL databases and program files. To uninstall one or more databases only see Section VII.5. below:

1. Click Start|Programs|CA on CD|Uninstall CA on CD.
2. Click Yes on the Confirm File Deletion window to continue.

3. Click **OK** after the Uninstall successfully completed message.

Database Uninstall

Use the Back Issue Installer to uninstall one or more databases only.

1. Insert disc1 of the most recent monthly (or Software Upgrade) release.
2. Run SETUP.EXE.
3. Click **Show Options**.
4. Click **Run Back Issue Installer**.
5. Follow the screen prompts.

See Appendix B on page 32 for further details and example screen captures.

Macintosh

Pre-OS X Server Uninstall

To uninstall ALL databases and program files:

1. Drag the CA on CD Folder to the trash.
2. If you copied any database files to the hard drive, then drag them to the trash.
3. Shut down the Macintosh.
4. Restart the Macintosh.
5. Empty the trash.

Pre-OS X Client Uninstall

Uninstall is unnecessary on the Macintosh Client Workstations.

Note: You may wish to remove the following files which remain on the Client Workstations and File Server following uninstall:

- CASBats and CASsript fonts
- CA on CD Preferences (in the Preferences folder)
- CA on CD Query Log (in the Preference folder)
- Any bookmark or saved document files that were saved outside the CA on CD folder

OS X Server Uninstall

1. Drag and drop the CAonCD OS X Folder from the Public Folder on the OS X Software File Server to the trash.
2. If you copied any database files to the hard drive, then drag them to the trash.

Appendix A: Sample Installations with Screen Captures

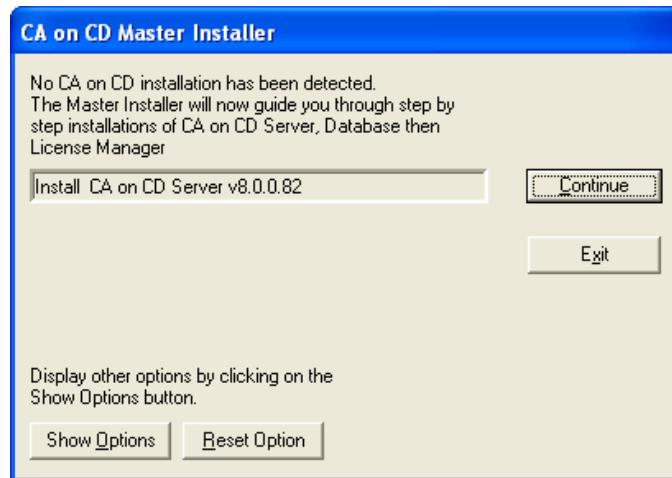
The following section shows the screens that are associated with the Windows installation programs.

This section contains pictures of some of the screens that customers may have questions about during the installation process and highlights parts of the installation that may not be self-explanatory.

Windows

Part A: Master Installer

The Master Installer acts as a gateway to the installation/upgrade of software, database, and License Manager by determining the status of any existing CA on CD installation then displaying the Master Installer screen, e.g., for new installations.



To implement the default action, click **Continue**.

To view which alternative options are available at this point, click **Show Options**.



The user may override the recommended action by selecting any of the highlighted options in the list.

To reset to the recommended action, click **Reset Option**.

To hide the options list, click **Hide Options**.

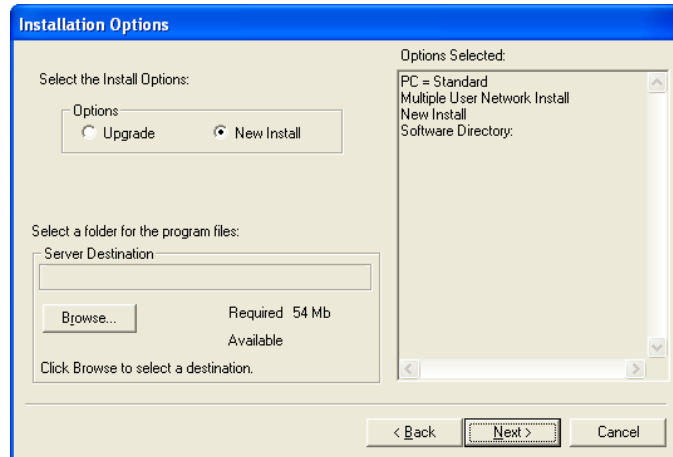
The following section shows pictures of some of the screens associated with each option in the Master Installer.

Part B: Server Software Installer

The Install Server Software option is displayed when no previous installation of CA on CD software is detected.

After clicking **Continue**

Installation Options Screen

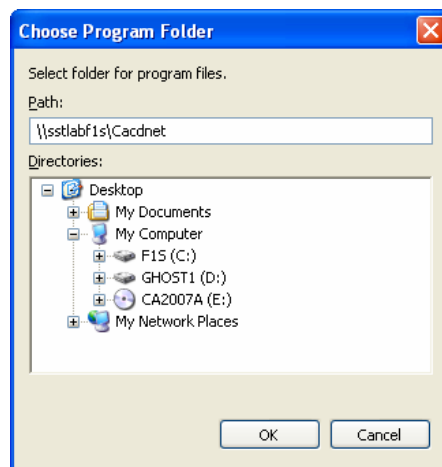


Upgrade – This option will be checked if you have previously installed any of the CA on CD Family of Products.

New Install – This option will be checked if you *have not* previously installed any of the CA on CD Family of Products.

Select a folder for the program files – Server Destination

You must choose a destination where you want to install the program files. To do this, click the **Browse** button, which will bring up the Choose Program folder screen.



In the Path command line, type the path to the destination where you want to install the program files. If your network supports the Universal Naming Convention (UNC), CAS strongly recommends that you use it, rather than mapped drive letters, when specifying the path name. For example: [\\servername\sharename\programfolder](#)

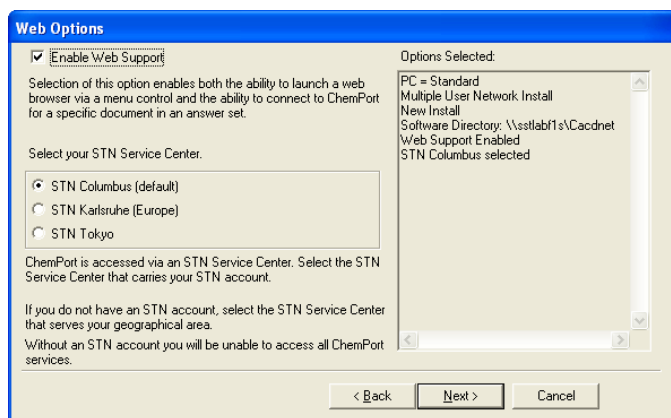
Note: Server may be any operating system that supports shared volumes usable by Windows clients

If your network does not support UNC names, then you must use mapped drive letters. You can select the destination drive you have already mapped from the Drives drop-down window by clicking on the "down arrow" control.

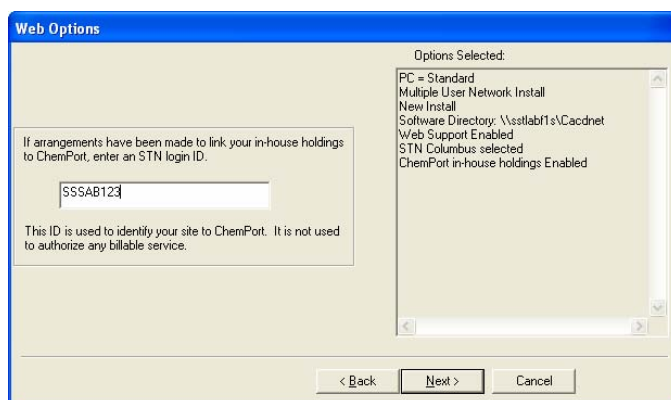
After you have entered the path, click **OK**.

Click **Next**.

Web Options Screens

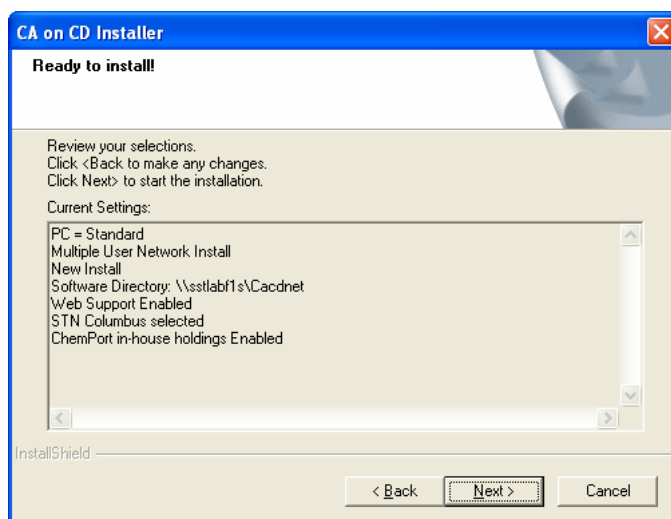


Check the **Enable Web Support** box if you wish to have access to specific predefined URLs.



After you have enabled the **Web Support** feature you may enter an STN Login ID if arrangements have been made to link In-House holdings to Chemport.

Ready to Install Screen



This is the last screen you will see before starting the actual installation. Review your selections in the Current Settings window. If you have made any mistakes during the preceding steps, you may click on the Back button to go back and make the necessary changes. Once you have confirmed that the Current Settings are correct, click **Next** to start the actual installation.

When software installation is complete a message is displayed.



Click **OK** to return to Master Installer. You will be prompted to install the monthly database – see Part D on page 23.

Part C: Single User Software Installer

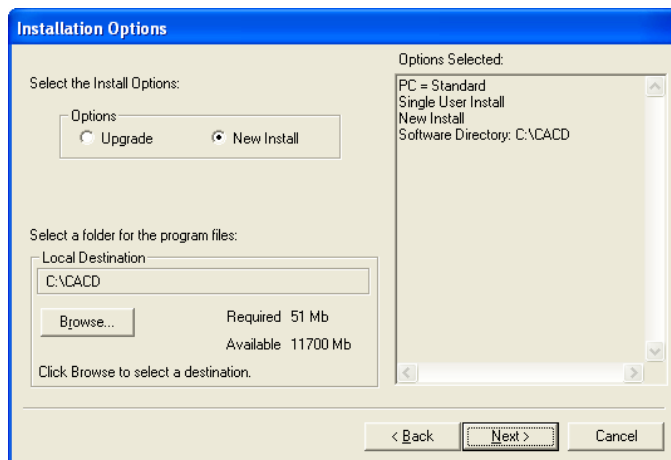
Master Installer Screen

If you are installing onto a machine that will not be accessed via the network and no CA on CD installation is detected, select the **Install CA on CD Single User** from the options list and click **Continue**.



This is a stand-alone installation that allows only one user to access the product at a time.

Installation Options Screen

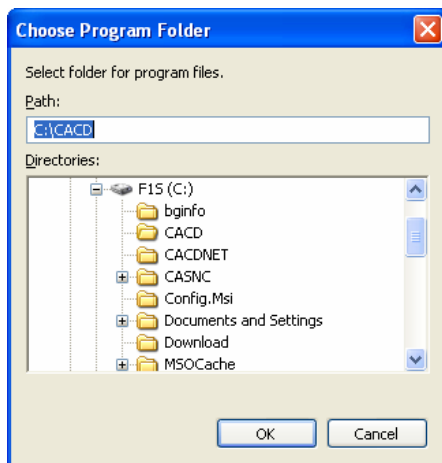


Upgrade – This option will be pre-selected if you have previously installed any of the CA on CD Family of Products.

New Install – This option will be pre-selected if you have not previously installed any of the CA on CD Family of Products.

Select a folder for the program files – Local Destination

You must choose a folder where you want to install the program files. You can accept the default location (recommended). However, you may choose an alternate location by clicking the Browse button, which will bring up the Choose Program folder screen.

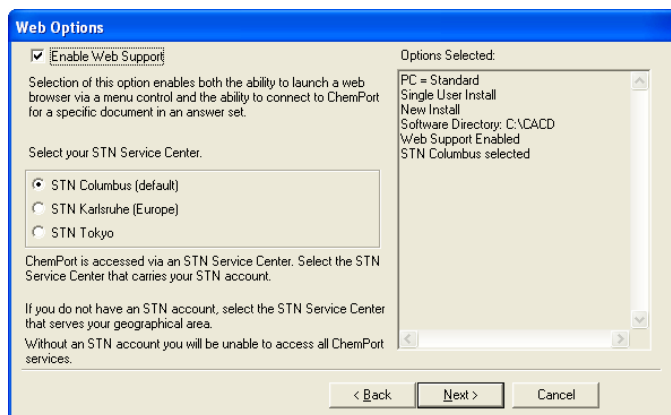


In the Path command line, type the path to the folder where you want to install the program files. You can also change the destination drive by clicking on the "down arrow" control on the Drives drop-down window.

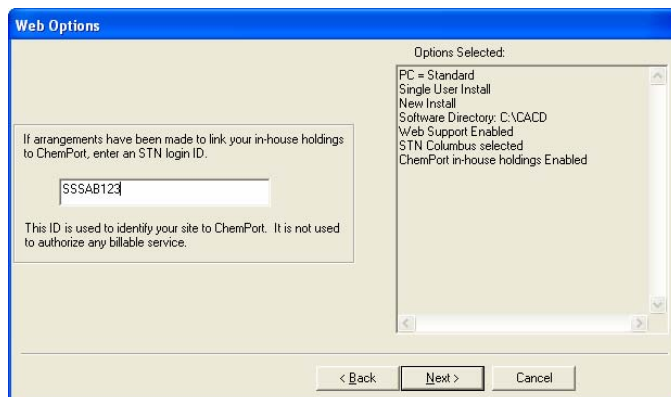
After you have entered the path, click **OK**.

Click **Next**.

Web Options Screens

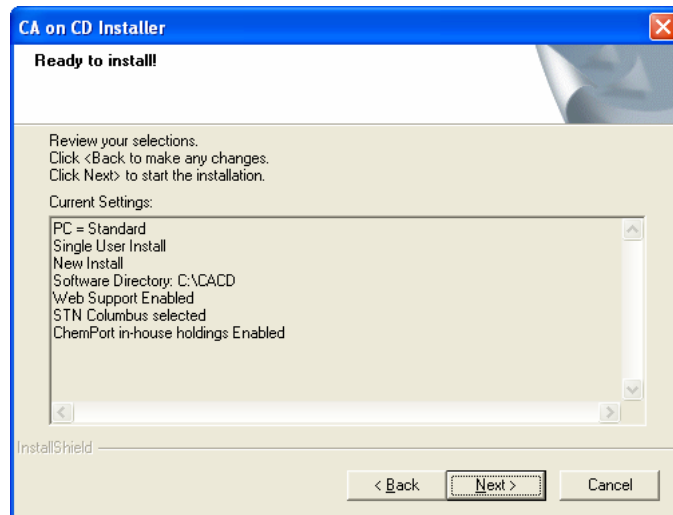


Check the **Enable Web Support** box if you wish to have access to specific predefined URLs.



After you have enabled the **Web Support** feature you may enter an STN Login ID if arrangements have been made to link In-House holdings to Chemport®.

Ready to Install Screen



This is the last screen you will see before starting the actual installation. Review your selections in the Current Settings window. If you have made any mistakes during the preceding steps, you may click the **Back** button to go back and make the necessary changes. Once you have confirmed that the Current Settings are correct, click **Next**. The installation process begins.

After the Single User software is installed you will be returned to the Master Installer screen and prompted to install the monthly database.

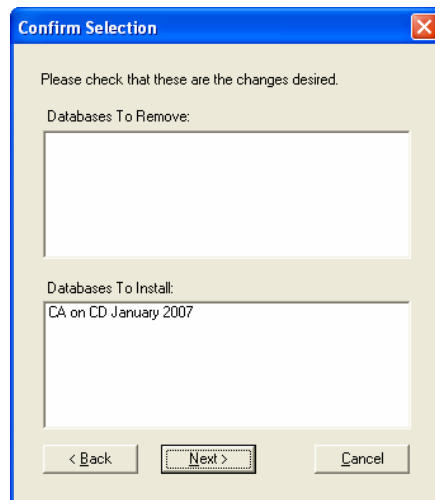
Part D: Monthly Database Installer

If the Server/Single Software is up to date but the database on the CD is not installed, the recommended action will be 'Install Monthly Database'. This will be the normal situation for all monthly installations following the June issue.



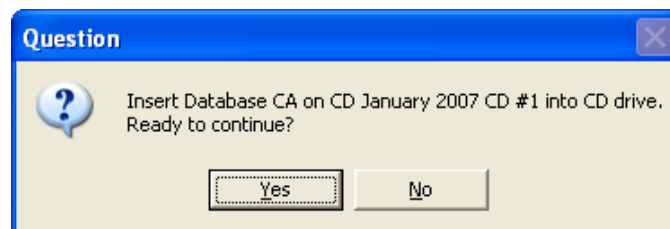
Click **Continue**.

Confirm Selection Screen



Click **Next**.

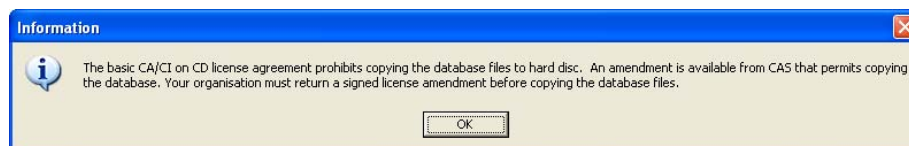
Confirmation screen displayed.



Ensure CD#1 for the appropriate database is inserted.

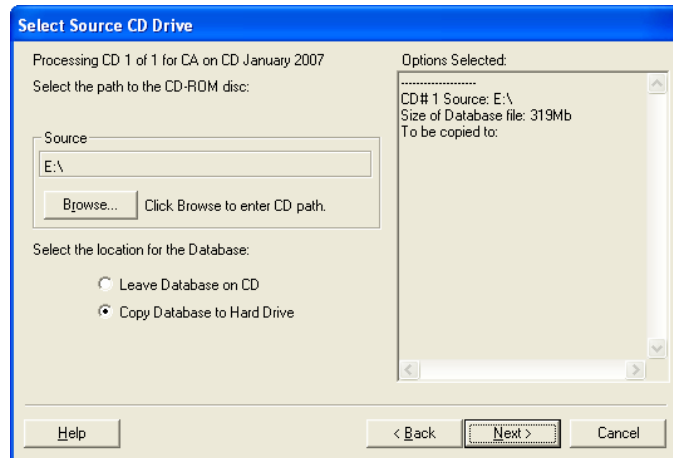
Click **Yes**.

An information window is displayed confirming that a license agreement must be signed prior to copying database files.



Click **OK**.

Select Source CD Drive Screen

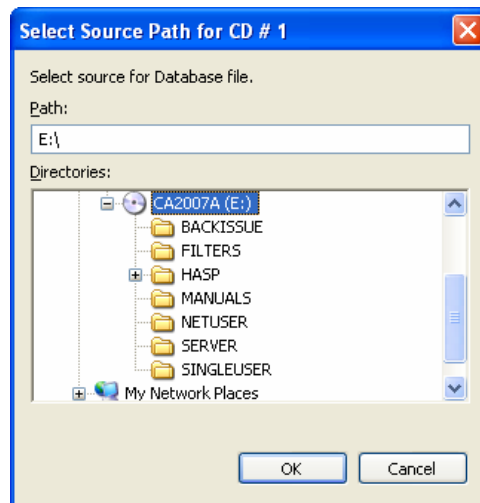


Select the Location for the Database

Copy Database to Hard Drive – This is the default option to copy the database files to the hard drive.

Note: The Leave Database on CD option is no longer recommended.

Click the Browse button, which will bring up the Select Source Path for CD # 1 screen.

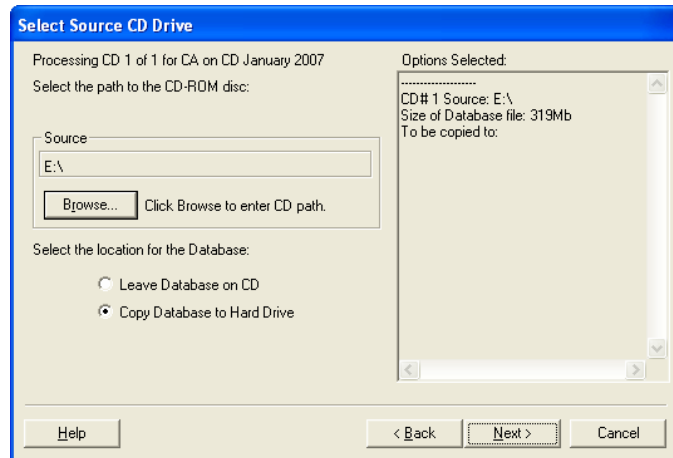


From the Path command line, enter the source path of the first CD-ROM disc.

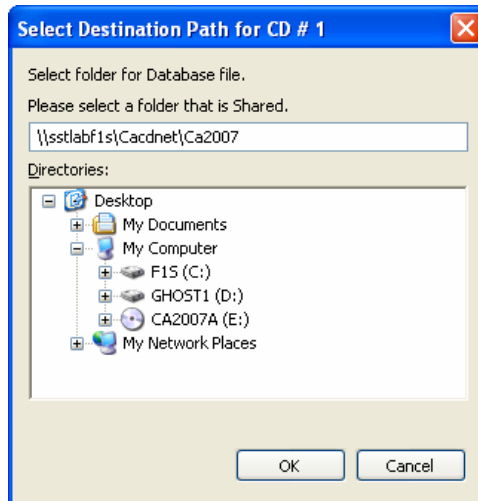
Note: The default path listed should be correct. You are prompted to insert the remaining discs during the copy-to-hard drive process.

Click **OK**. The installation program will take you back to the previous screen. Click **Next**, which will bring up the Select Destination Hard Drive for Database File screen.

Select Destination Hard Drive for Database File Screen



Select the location on the hard drive where the database file will be copied (Server Destination). Click **Browse**, which will bring up the Choose Destination Path for CD # 1 window.



In the Path command line, enter the destination path where you wish to copy the first database file. Remember to use UNC names. For example: \\servername\sharename\programfolder.

If your network does not support UNC names and you must use mapped drive letters, you can select the destination drive from the Drives drop-down window by clicking on the "down arrow" control.

Note: Do not click the Network button – this option is not supported.

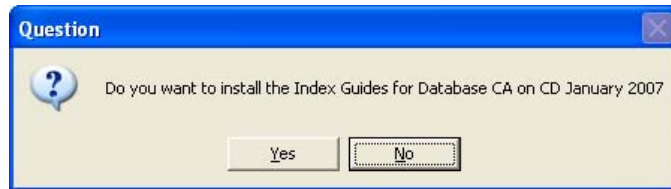
Click **OK**. The installation program will take you back to the previous screen. Click **Next**, and repeat the process of:

- Selecting the source path for each remaining disc
- Selecting the destination path for each remaining database file

Click **Next** to display the **Ready to install screen**.

Check that this is correct then click **Next** – database files will be copied to Hard Drive.

You will then be prompted to install Index Guides.



Click **Yes** if appropriate.

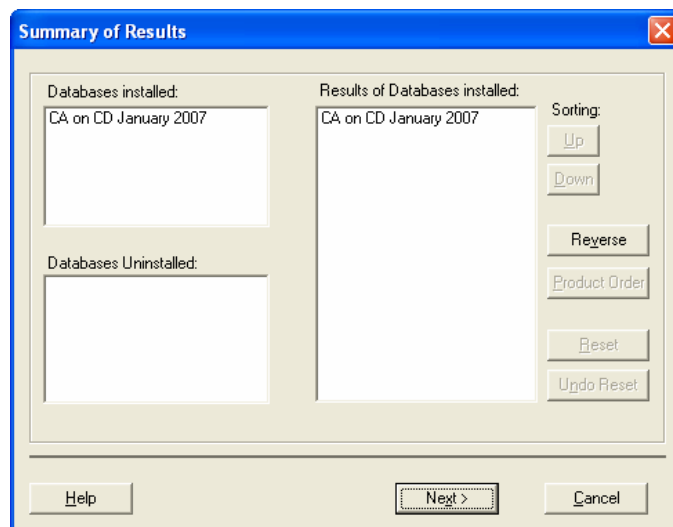
The Installer prompts for the appropriate CD to be inserted into the CD Drive.



Click **OK**.

(Click **Back** to revert to previous window.)

Ready to install screen

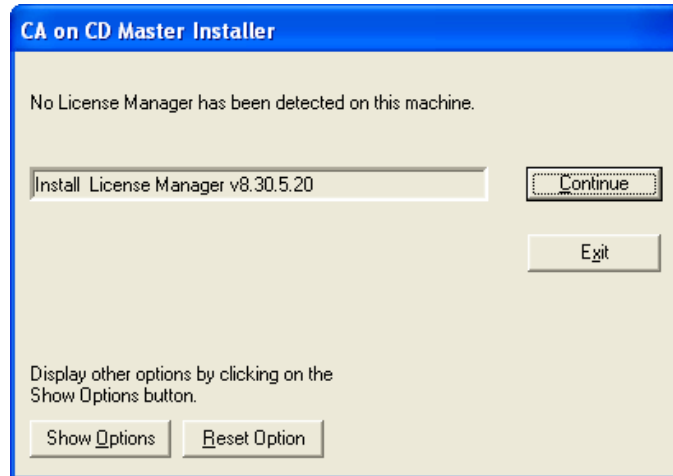


Note: If a number of databases are installed you may wish to Sort the order that these appear when running CA on CD using the Sorting buttons at top right of the Summary of Results Window.

Click **Next**.

A Completion screen is displayed. Click **Next** to return to the revised **Master Installer** screen.

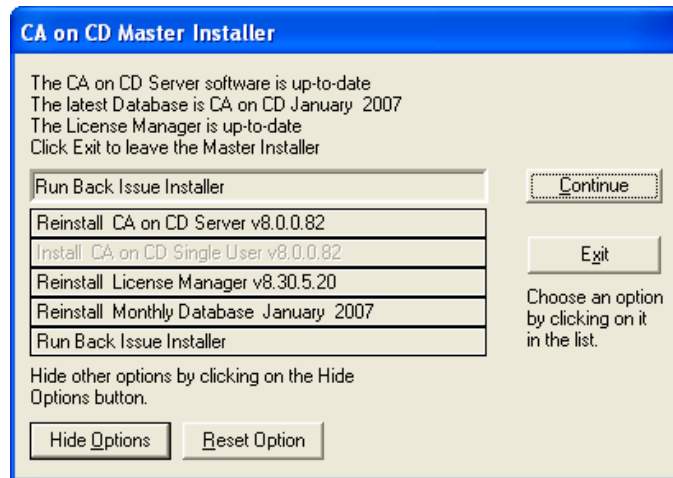
When Software and database is up to date the Master Installer will prompt for installation or upgrade of the License Manager if this is required.



See Part E.

Reinstallation or Repair of installed components

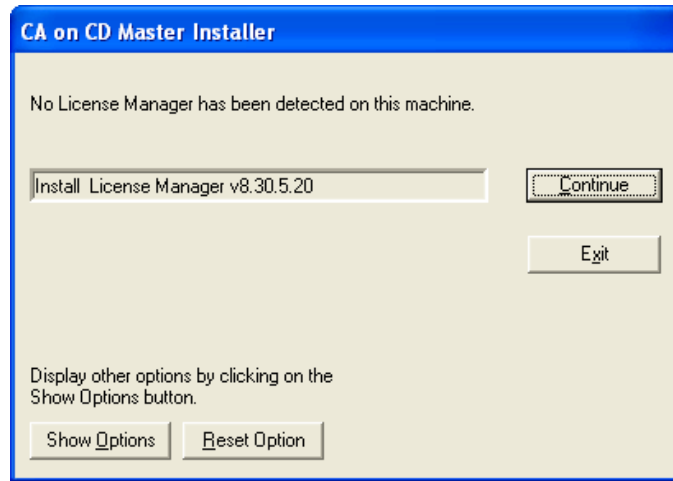
In the event of your needing to repair the CA on CD installation, the Master Installer also provides the option to reinstall either software, Monthly Database or License Manager. Click **Show Options**.



Part E: License Manager Installer

If you are using a client/server system, a License Manager (and device driver) must be installed on your network (device driver only required for Single User installation). CAS recommends that the License Manager is installed on the same machine as the CA on CD Software.

You will be prompted by the Master Installer to install/Upgrade the License Manager. A **reboot** is required following this operation.



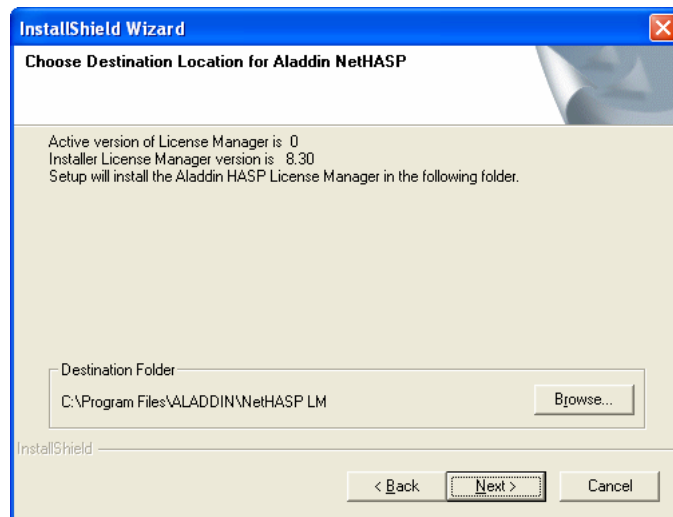
Note: If you use a remote License Server, place CD#1 into that machine and run setup.exe then select Install/Upgrade License Manager from the Show Options menu.

The License Manager is not supported by Netware or Windows NT 4.0.

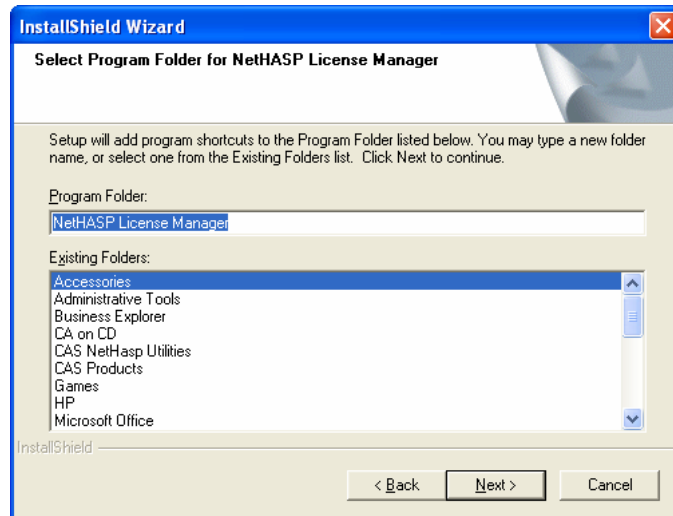
On Windows 2000, XP and Server 2003 the License Manager will be installed as a **'Service'**.

Click **Continue**.

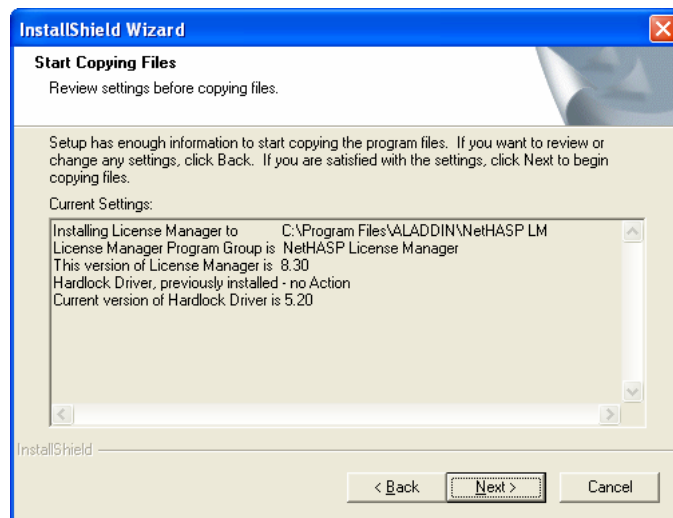
The next screen will prompt you to select or type the destination path where you want the new service installed.



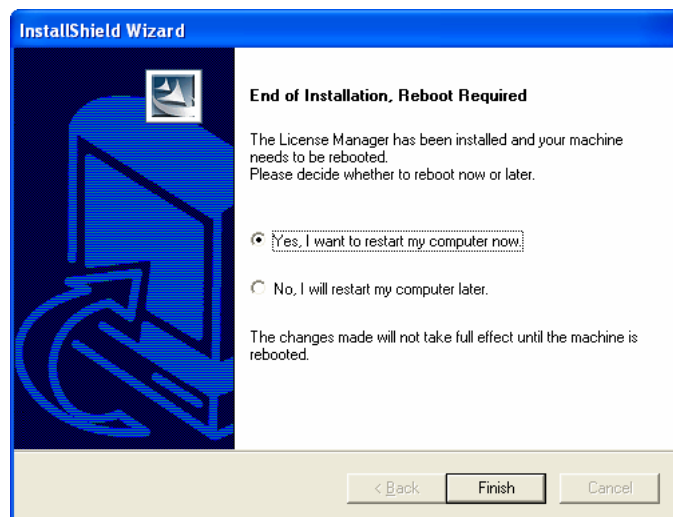
You will then be prompted for the folder to contain the program shortcuts. Accept or change the new Program Folder for the program shortcuts in your Start Menu folder.



Click **Next** to confirm the destination of your new program shortcuts.



Once the installation has been completed you will see the confirmation screen with the option to **Reboot**.



Click **Finish** to complete installation of License Manager.

The installer will display the status of your installation once reboot is completed.

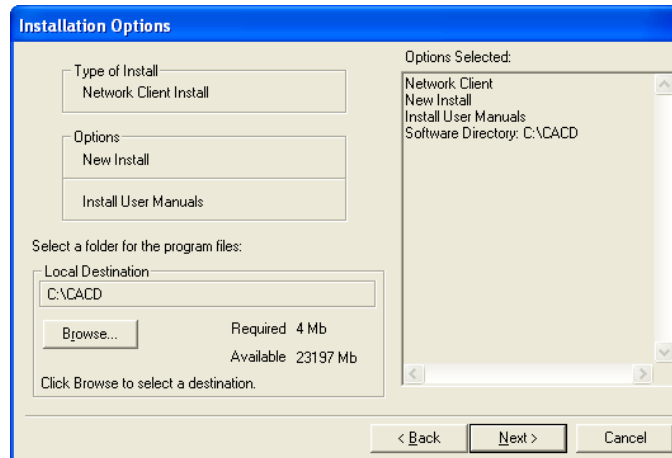
Click **OK** to reboot the License Server.

Once Software, Monthly Database and License Manager are up to date, you may run the Master Installer again to launch the Back Issue Installer for installation of older Archival and Collective Index databases. See Appendix B on page 32.

Click **Exit** to leave the Master Installer.

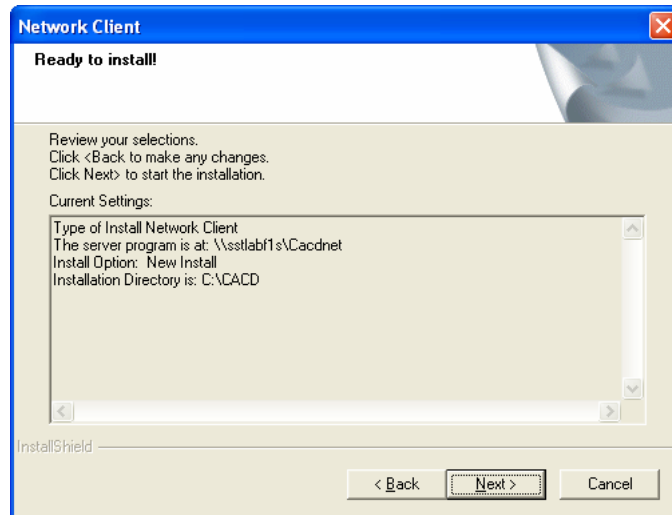
Part F: Client Installation

Installation Options Screen



Click **Next** to accept the default location. If you wish to change the default, click Browse to select a different directory on the local drive.

Ready to Install Screen



This is the last screen you will see before the actual installation begins. Review your selections in the Current Settings window.

If you have made any mistakes during the preceding steps, you may click on the **Back** button to go back and make the necessary changes. Once you have confirmed that the Current Settings are correct, click **Next** to start the installation process.

Note: After installing new manuals using monthly or Back Issue database installation, Client Update must be run from the CA on CD program group of each client to ensure access to these new manuals.

Ensure that HASP device drivers are installed on each Client Workstation – see Section VII on page 15.

Appendix B: Windows Back Issue Installer/Uninstaller

The **Back Issue Installer** provides a means to add or remove databases while avoiding the installation of older incompatible software. It allows you to select for installation any Back Issue(s) of our CA on CD Archival or Collective Indexes on CD should you have the appropriate discs.

- Your HASP key will need to be updated to provide access to the newly installed Back Issue database if not already listed.

Note: To check to see if your HASP key has already been programmed for the database you are installing, run Nhlocal.exe from CD #1 \HASP directory.

- Launch the Back Issue Installer from the Master Installer.
- You may install and uninstall databases during the same Back Issue Installer session.
- The Back Issue Installer may also be used to sort the order in which database names appear in the list of databases when opening.
- Index Guides may be installed during installation of back issues.

How to Add an Older Database

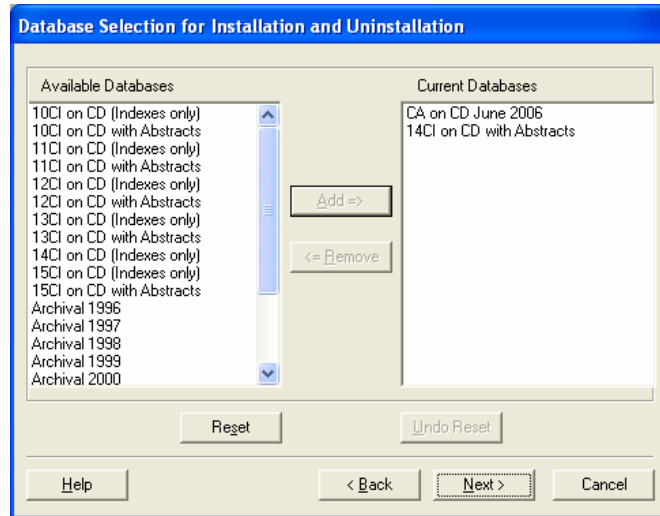
Using the Master Installer

1. Insert the Monthly CD #1.
2. Click Start/Run.
3. Type x/setup.exe.
4. Click Show Options.
5. Select Run Back Issue Installer.
6. Click Continue.

Direct from CD

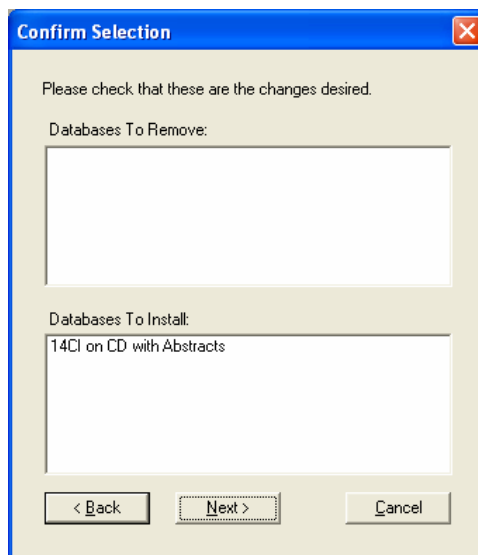
1. Click **Start/Run**
2. Type x:\backiss.exe where x is the drive containing disc1 of the latest CA or Software Upgrade disc sent to you. Click **OK**.
3. You will see the **Welcome** window. Click **Next**. The program will automatically detect where your CA on CD software has been installed.

Select the database you want to add from the list on the left (e.g., 14CI with Abstracts) and click **Add**. The databases should then appear in the window on the right. You may add as many as needed one at a time.



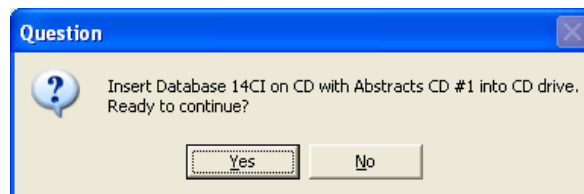
Check to see that your selection and the discs correspond. Click **Next**.

A **Confirmation** window shows the database(s) to be added.



Click **Next**.

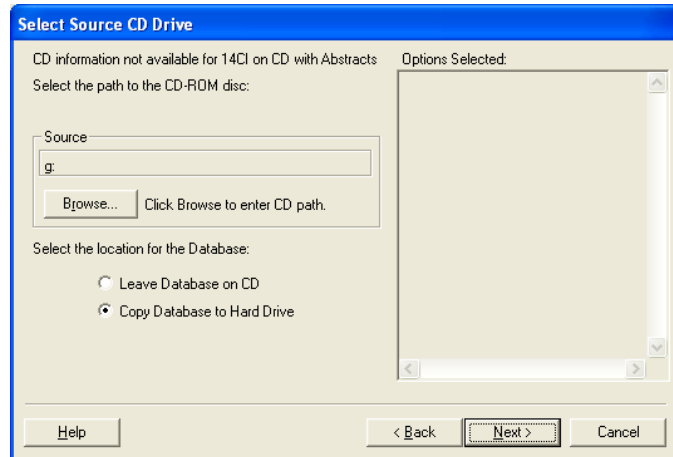
You will be asked to confirm that you are ready to continue.



Ensure all of the appropriate CDs are at hand. Insert chosen database disc1 into the CD-ROM drive. Click **Yes**.

You will see an information window reminding you that a special agreement is required to copy the databases to hard drive. Click **OK**.

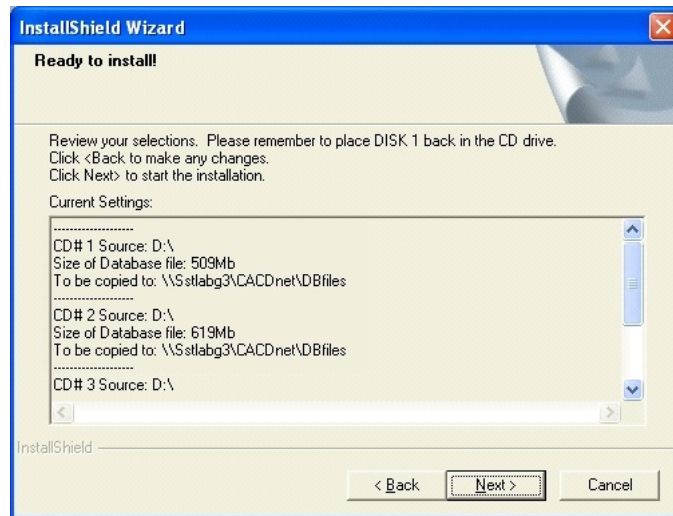
You will see the **Select Source CD Drive** window. Click **Browse** to select the drive if different than the one shown. Click **Next**.



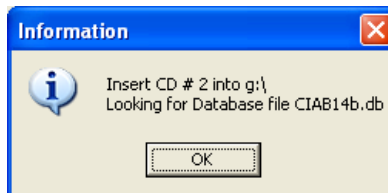
The pre-selected option Copy Database to Hard Drive.

Click **Next** and repeat confirmation of source and destination locations for subsequent CDs.

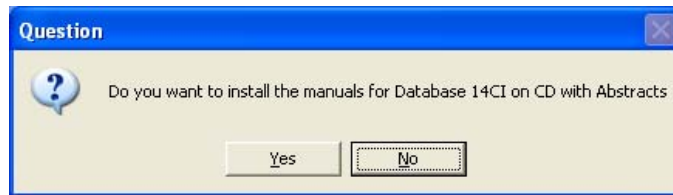
The **Ready to install** window comes up. This allows you to check the source and destination paths before copying begins. Once all of the files are copied, your configuration file will be changed to include the new database.



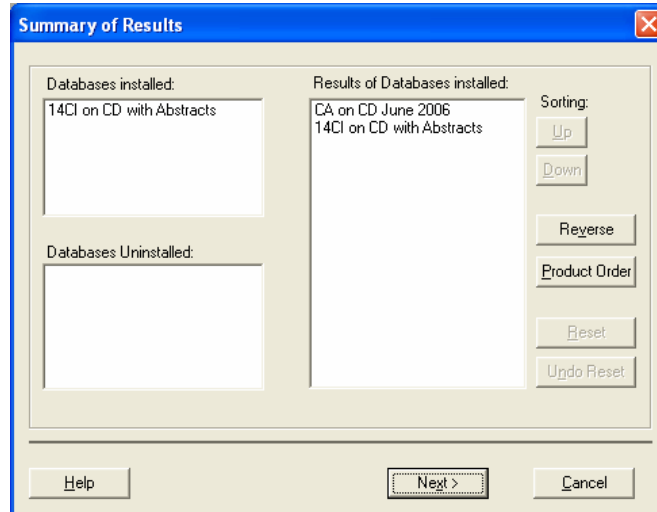
Follow the prompts for changing the CDs as needed.



You have the opportunity to install Index Guides for selected databases.



Following installation a **Summary of Results** is displayed.



At this point you have the opportunity to **Sort** the list of databases using the **Reverse** and **Product Order** options or by selecting a database in the list and using the **Up** and **Down** options. Use **Reset** to return to previous sort order.

The database list sort order may be modified independently using the Back Issue Installer by clicking **Next** until the **Summary of Results** window is displayed.

How to Remove an Older Database

You may run the Back Issue Installer from either the Master Installer or by using directly from the CD using the Backiss.exe program.

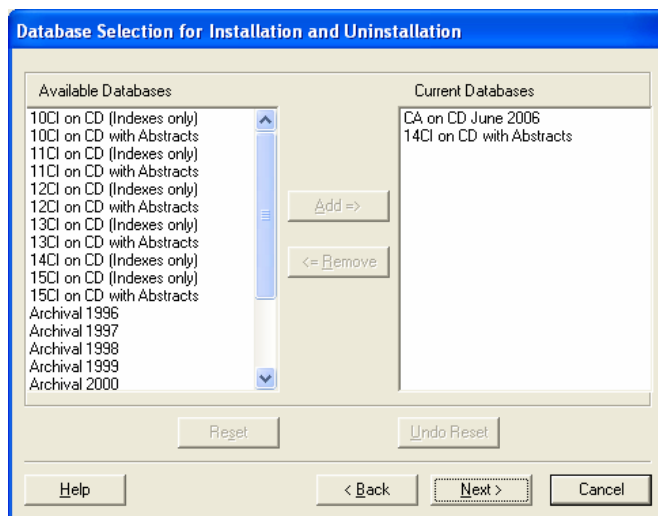
Using the Master Installer

1. Insert the Monthly CD #1.
2. Click **Start/Run**
3. Type **x/setup.exe**
4. Click **Show Options**
5. Select **Run Back Issue Installer**
6. Click **Continue**

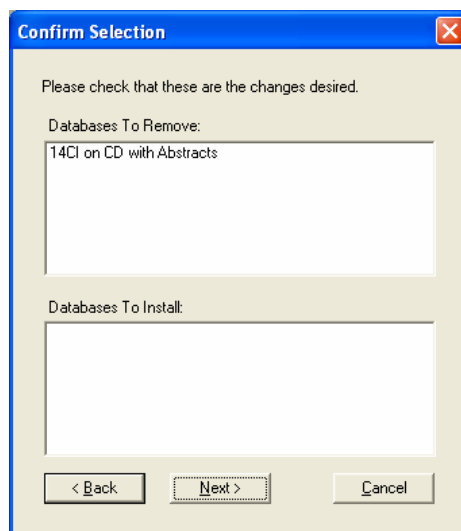
Direct from CD

1. Click **Start/Run**

2. Type `x:\backiss.exe` where `x` is the drive containing disc1 of the latest CA or Software Upgrade disc sent to you. Click **OK**.
3. Select the database (e.g. 14CI on CD with Abstracts) or databases from the list on the right of the installer window and click the **Remove** button. Click **Next**.



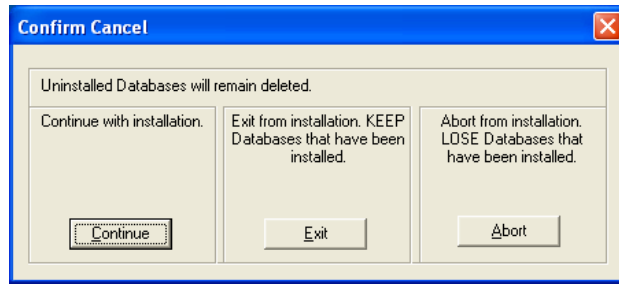
You will see a **Confirm Selection** window. See that the list shows only the databases you want to remove. If all is correct, click **Next** to proceed with the uninstall.



Once the database has been removed, a Summary of Results is displayed and your configuration file will be changed accordingly.

Canceling the Operation or if an Error Occurs

Should you not be able to complete your changes at this time, you may cancel the process before it completes. The following screen may appear when you do this.



The options are:

- **Continue the installation.** This will continue with the installation. Watch for the prompts.
- **Exit from installation.** Exiting will keep the databases that have already been installed but stop any additional database installations you had selected.
- **Abort from installation.** Aborting the installation will remove any databases that have been installed during this running of the Back Issue Installer.

Your changes will be seen when you run CA on CD from a client computer if they involved removal of a database or if installation of at least one of the additional databases had completed.

Appendix C: License Server, License Manager, NetHASP Monitor, and Usage Program

In the multiple user (network) environment the License Server is the Windows machine where the HASP HL Net hardware key is attached. It is also the machine on which the NetHASP License Manager program executes.

Selecting the License Server

As previously indicated, for Windows only or mixed platform networks, CAS recommends that you select the same Windows machine to function as both the Software/Database File Server and the License Server.

The preferred location for a Windows License Server is on a machine running Windows 2000, XP or Server 2003. In these cases, the NetHASP License Manager is installed so that it starts as a service and therefore does not require a user to be logged onto the machine. The NetHASP Key Utility program, used to update the NetHASP hardware key whenever you install an additional database title, can also be run in this environment. The 32-bit Windows version of the NetHASP License Manager listens to TCP/IP/UDP.

If the Software/Database File Server is running NetWare, then a remote machine running Windows 2000, XP or Server 2003 is also the preferred location for the License Server.

What is a License Manager and How Does it Work?

A CA on CD subscription accommodates up to four simultaneous users at a site. This access is controlled by the use of a License Manager in a networked environment (more than one machine). The machine where the License Manager runs and the NetHASP key is attached is called the License Server. The NetHASP key is programmed with the appropriate databases for each customer, along with 4 simultaneous users for each database. When a client installation (Macintosh or Windows) selects a database to open, the CA on CD application tries to obtain a license to use that database. The License Manager checks to see how many users are authorized for that database and also checks to see how many licenses are in use for that database. If the number of authorized licenses is greater than the number of current users, another license is allocated to the requesting user.

As a result of the installation process, the NetHASP License Manager automatically starts whenever the License Server is booted. Therefore, the NetHASP License Manager should always be running whenever the License Server is available. However, if the Windows NetHASP License Manager should ever terminate, and you do not wish to reboot the License Server, then follow the procedures:

Windows 2000, Windows XP, Windows 2003 Server

- From the Control Panel, double-click the Services program icon. Select HASP Loader from the Service list and then click *Start*. You must be logged on as an administrator.

Temporarily Stopping the Windows NetHASP License Manager

If there is a need to stop temporarily the Windows NetHASP License Manager from running, do the following:

- Choose the Exit control on the License Manager's menu bar.

Configuring Access to the NetHASP License Manager

In a few network configurations the NetHASP License Manager may not communicate well with the Client Workstations (Windows or Macintosh). This situation is shown by the Client Workstation intermittently receiving the message "Could not communicate with HASP Key" when trying to run the CA on CD application.

Windows Installations

If your File Servers, License Server, and Client Workstations are ALL running the TCP/IP protocol, then you can configure the NetHASP License Manager to use only that protocol by editing the NETHASP.INI file. This is located in the top level of the shared software directory on your Windows or Macintosh pre-OS X Software File Server. Uncomment the following lines to the appropriate sections as indicated:

```
[NH_COMMON]
NH_TCPIP = Enabled
```

```
[NH_TCPIP]
NH_SERVER_ADDR=xxx.xxx.xxx.xxx
NH_TCPIP_METHOD = TCP
NH_USE_BROADCAST = Disabled
```

where xxx.xxx.xxx.xxx is the IP address of the Windows machine (License Server) where the NetHASP License Manager executes.

OS X Macintosh Installations

The OS X NETHASP.INI file is located in the Support subfolder of the CAonCD OS X Folder on the OS X Software File Server. Uncomment the following lines to the appropriate sections as indicated:

```
[NH_COMMON]
NH_IPX = Disabled
NH_NETBIOS = Disabled
NH_TCPIP = Enabled
NH_SESSION = 8
```

```
[NH_TCPIP]
NH_SERVER_ADDR=xxx.xxx.xxx.xxx
NH_TCPIP_METHOD = UDP
NH_USE_BROADCAST = Disabled
```

where xxx.xxx.xxx.xxx is the IP address of the Windows machine (License Server) where the NetHASP License Manager executes.

Copy the resulting file to the Home directory of the Macintosh OS X Client.

Running the NetHASP Monitor

The NetHASP Monitor is currently only available for Windows and is an application program that provides the Network Administrator with information concerning the users currently logged on to the NetHASP License Manager in a multiple user (network) installation. This can be useful in resolving problems if a user is experiencing difficulty in logging on to the CA on CD application.

- The installation process does not install the NetHASP Monitor. To run this program go to the latest monthly release Disc 1 (or Software Upgrade CD) and run x:\HASP\Monitor\Aksmon.exe, where x is the letter of the CD-ROM drive on the Windows machine that contains disc1.

Usage Program

CA on CD installs a Usage Program that displays information about how often the CA on CD family databases are being accessed, and how many access attempts failed due to all the available licenses being in use. For more information regarding the Usage Program, refer to its online help file.

Windows Multiple User

The Usage Program is called cacdlog.exe and is installed in the HASP folder within the shared software directory on the server. Double-click the program to execute it.

Windows Single User

The Usage Program is called cacdlog.exe and is installed in the main installation folder. Double-click the program to execute it.

Mac OS X

The Usage program is not currently available for this platform.